

VORTAC RDU 117.2 Chan 119	APP CRS 077°	Rwy Idg TDZE Apt Elev N/A N/A 368
---	------------------------	---

VOR-A
TRIANGLE NORTH EXEC (L.H.Z)

DME required.

▼ When local altimeter not received, use Raleigh-Durham Intl altimeter setting and increase all MDA 80 feet and Cats B/C visibility ¼ SM.

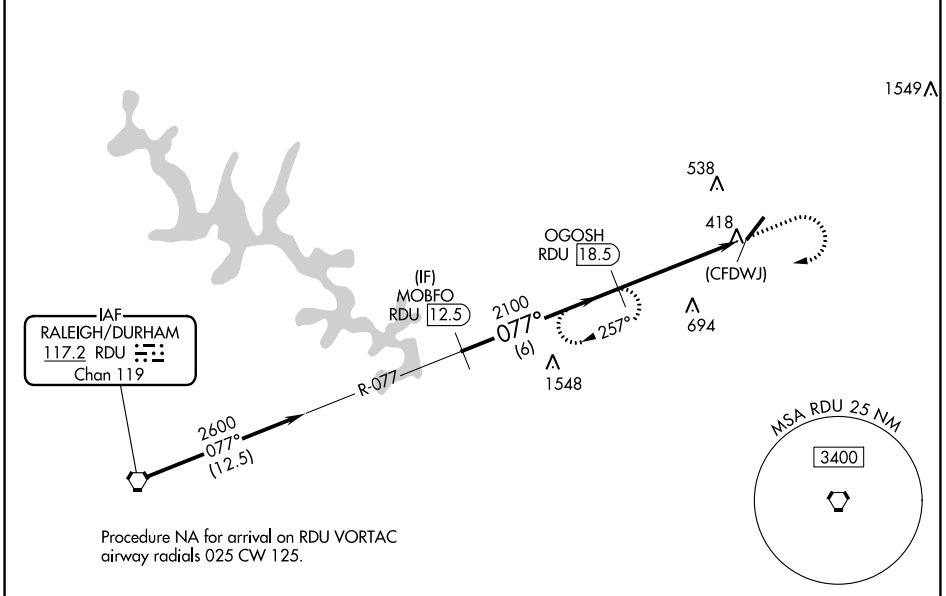
▲

MISSED APPROACH: Climb to 1200 then climbing right turn to 2600 on heading 280° and on RDU VORTAC R-077 to OGOSH/RDU 18.5 DME and hold.

AWOS-3
118.325

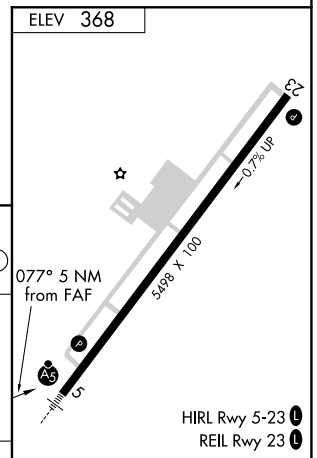
RALEIGH APP CON
125.3 353.675

UNICOM
123.0 (CTAF) 0



SE-2, 03 NOV 2022 to 01 DEC 2022

SE-2, 03 NOV 2022 to 01 DEC 2022



	MOBFO RDU 12.5	OGOSH RDU 18.5	
2600	077°	2100	(CFDWJ)
6 NM		5 NM	
	1200	2600	
	↑	hdg 280°	
		RDU R-077	OGOSH RDU 18.5

CATEGORY	A	B	C	D
CIRCLING	1260-1¼	892 (900-1¼)	1260-2¾ 892 (900-2¾)	1260-3 892 (900-3)

FAF to MAP 5 NM					
Knots	60	90	120	150	180
Min:Sec	5:00	3:20	2:30	2:00	1:40