

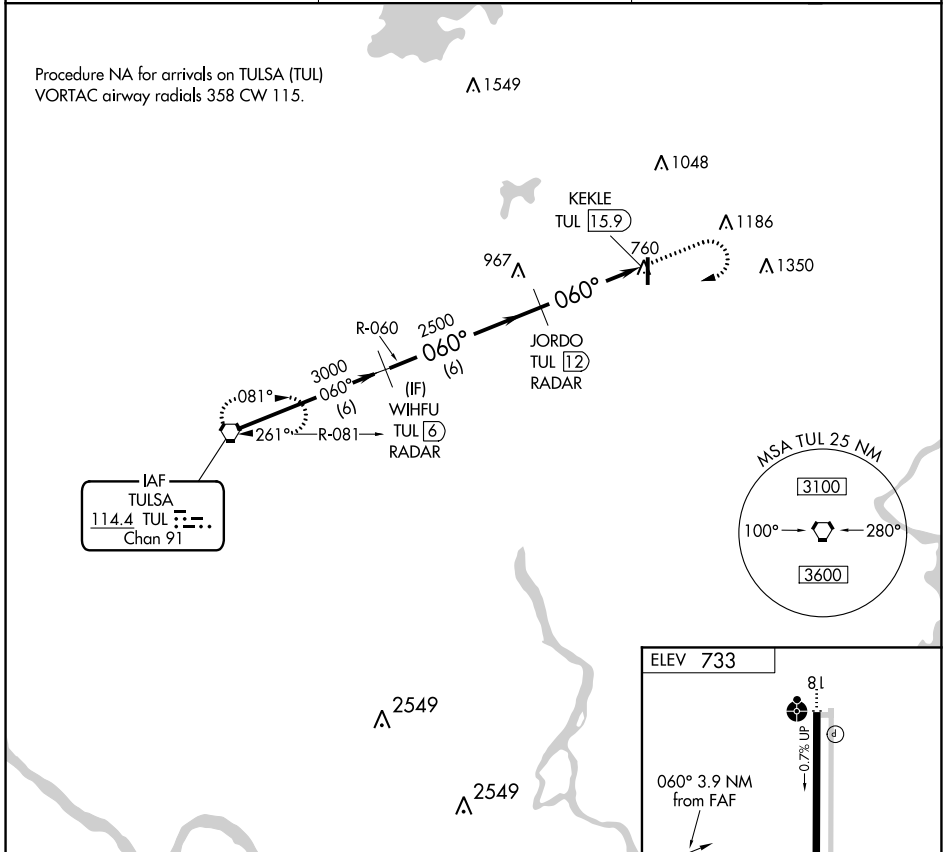
VORTAC TUL <b>114.4</b> Chan <b>91</b>	APP CRS <b>060°</b>	Rwy Idg TDZE Apt Elev	<b>N/A</b> <b>N/A</b> <b>733</b>
--	------------------------	-----------------------------	--

**VOR/DME-B**  
CLAREMORE RGNL (GCM)

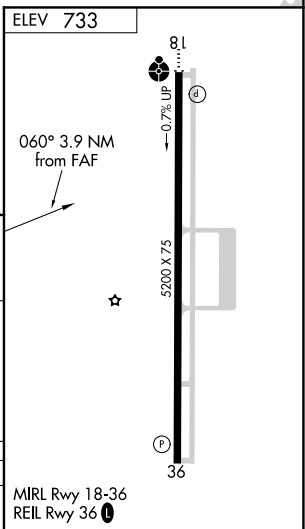
**▽** If local altimeter setting not received, use Tulsa Intl altimeter setting and increase all MDAs 60 feet.

MISSED APPROACH: Climb to 2500 then climbing right turn to 3000 direct TUL VORTAC and hold.

AWOS-3P <b>119.925</b>	TULSA APP CON <b>119.1 360.825</b>	UNICOM <b>122.7 (CTAF) ①</b>
---------------------------	---------------------------------------	---------------------------------



Procedure Turn NA	WIHFU TUL (6) RADAR	JORDO TUL (12) RADAR	KEKLE TUL (15.9)	
	2500	3000	TUL	
3000	060°	2500		
6 NM		3.9 NM		
CATEGORY	A	B	C	D
CIRCLING	1260-1	527 (600-1)	1380-1¾ 647 (700-1¾)	NA



SC-1, 03 NOV 2022 to 01 DEC 2022

SC-1, 03 NOV 2022 to 01 DEC 2022