

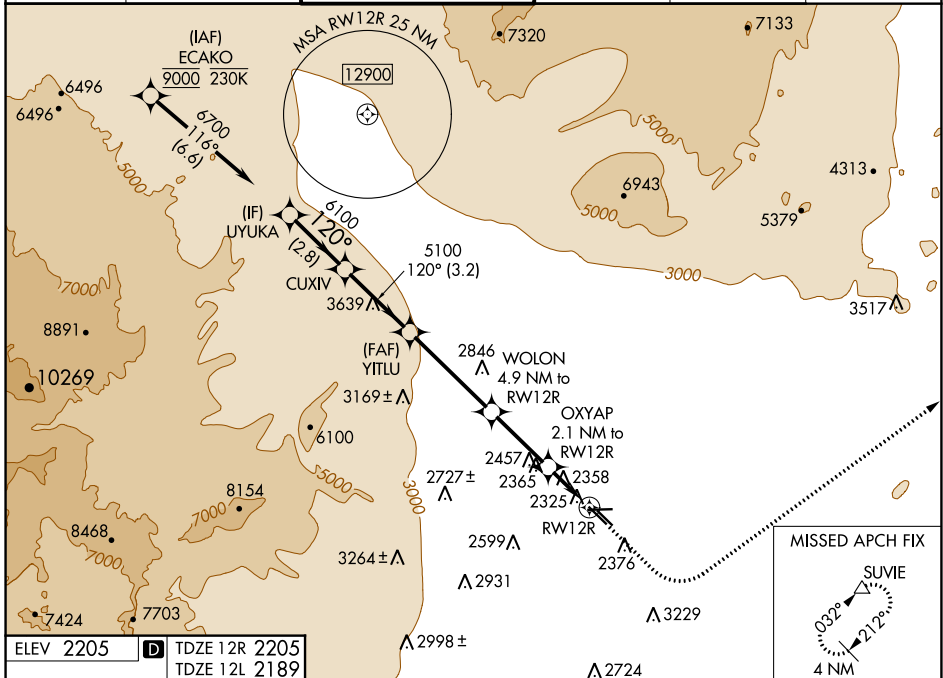
WAAS CH 69443 W12A	APP CRS 120°	Rwy Idg 5000 2205 2205	12R 4199 2189 2205
--	------------------------	---------------------------------	-----------------------------

RNAV (GPS) RWY 12R

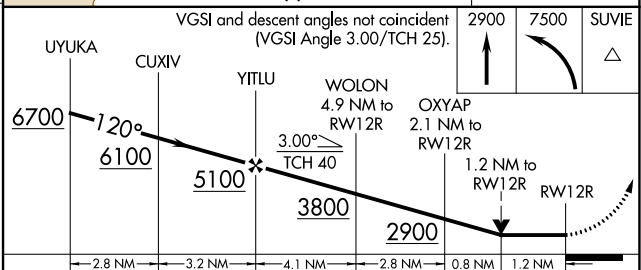
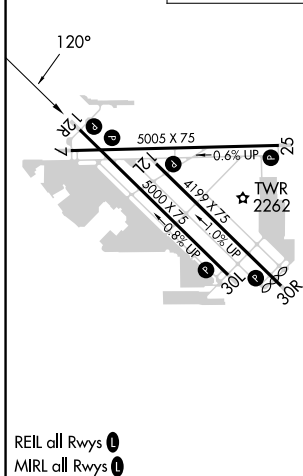
NORTH LAS VEGAS (VGT)

RNP APCH - GPS.		MISSED APPROACH: Climb to 2900 then climbing left turn to 7500 direct SUVIE and hold, continue climb-in-hold to 7500.			
Rwy 12R helicopter visibility reduction below 3/4 SM NA.					

ATIS 118.05	LAS VEGAS APP CON 119.4 360.85	NORTH LAS VEGAS TOWER * 125.7 (CTAF) 360.75	GND CON 121.7	CLNC DEL 124.0	UNICOM 122.95
-----------------------	--	---	-------------------------	--------------------------	-------------------------



ELEV 2205	D	TDZE 12R 2205	TDZE 12L 2189
-----------	----------	---------------	---------------



CATEGORY	A	B	C	D
LP MDA	2620-1	415 (500-1)	2620-1½	415 (500-1½)
LNAV MDA	2820-1	615 (700-1)	2820-1¾	615 (700-1¾)
SIDESTEP 12L	2820-1	631 (700-1)	2820-1¾ 631 (700-1¾)	2820-2 631 (700-2)
C CIRCLING	2820-1	615 (700-1)	2840-1¾ 635 (700-1¾)	3540-3 1335 (1400-3)

SW-4, 03 NOV 2022 to 01 DEC 2022

SW-4, 03 NOV 2022 to 01 DEC 2022