

APP CRS	Rwy Idg	N/A
122°	TDZE	N/A
	Apt Elev	1394

RNAV (GPS)-B

FALCON FLD (F'F'Z)

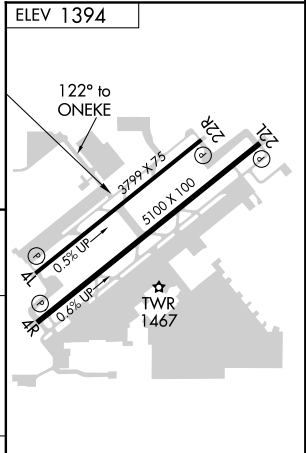
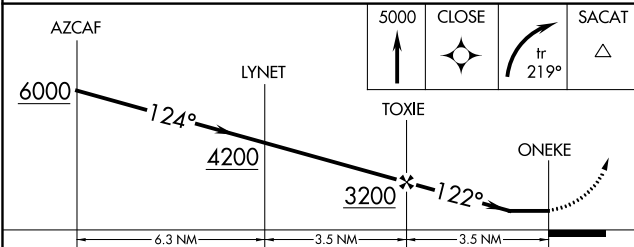
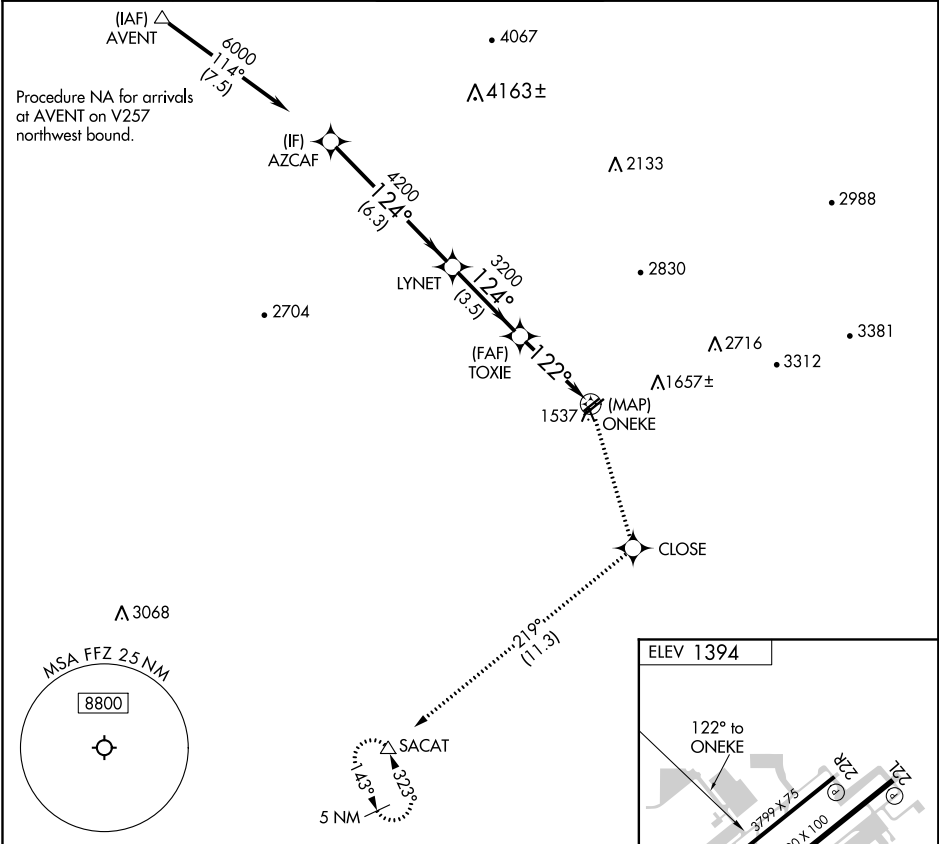
RNP APCH.

▼ Circling Rwy 22L, 22R NA at night. Circling NA for Cat C southeast of Rwy 4R-22L.

▲

MISSED APPROACH: Climb to 5000 direct CLOSE and right turn on track 219° to SACAT and hold, continue climb-in-hold to 5000.

ATIS 118.25	PHOENIX APP CON 120.7 239.0	FALCON TOWER * 124.6 (CTAF) 0	GND CON 121.3	UNICOM 122.95
-----------------------	---------------------------------------	---	-------------------------	-------------------------



CATEGORY	A	B	C	D
C CIRCLING	1860-1 466 (500-1)	1980-1 586 (600-1)	2040-1¾ 646 (700-1¾)	NA

REIL Rwy 4R, 4L, 22L and 22R
 MIRL Rwy 4R-22L **0**
 MIRL Rwy 4L-22R

SW-4, 03 NOV 2022 to 01 DEC 2022

SW-4, 03 NOV 2022 to 01 DEC 2022