

VOR/DME MBS <b>112.9</b> Chan <b>76</b>	APP CRS <b>125°</b>	Rwy Idg TDZE Apt Elev <b>602</b>	<b>N/A</b> <b>N/A</b>
---	------------------------	---	--------------------------

# VOR/DME-A

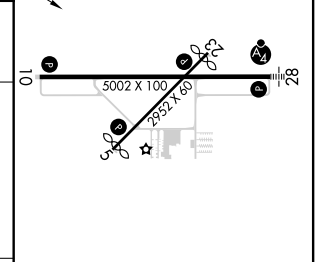
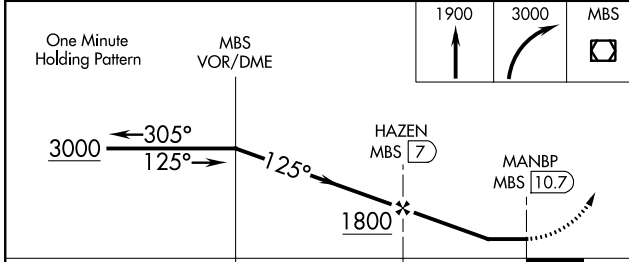
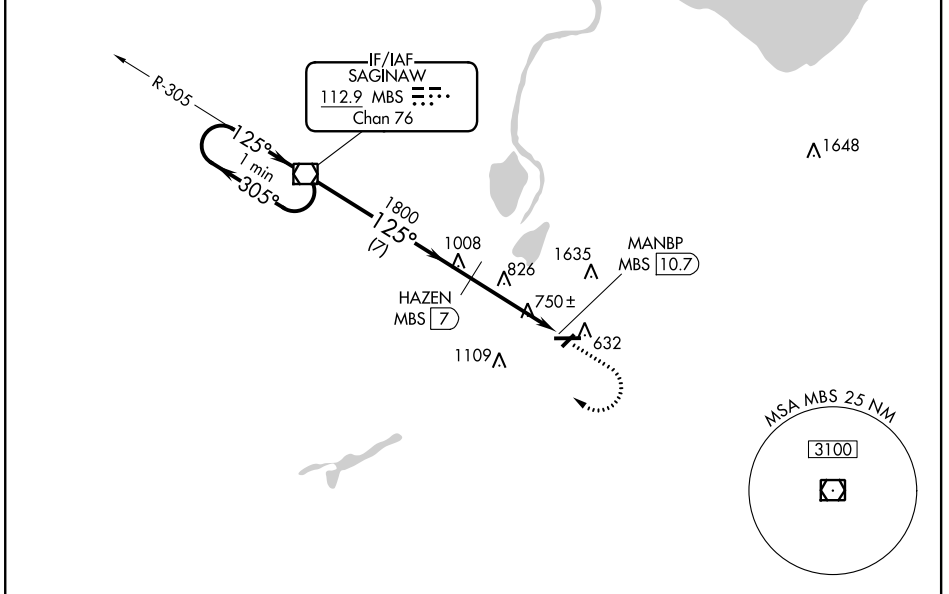
SAGINAW COUNTY/H W BROWNE (HYX)

**⚠** Circling to Rwy 5/23 NA at night. When local altimeter setting not received, use Saginaw MBS Intl altimeter setting and increase all MDA 40 feet and increase Circling Cat C visibility ¼ SM. Circling NA for Cat C north of Rwy 10-28.

**⚠** MISSED APPROACH: Climb to 1900 then climbing right turn to 3000 direct MBS VOR/DME and hold.

AWOS-3P <b>118.325</b>	GREAT LAKES APP CON * <b>120.95 235.625</b>	UNICOM <b>122.8 (CTAF)</b>
---------------------------	--	-------------------------------

NoPT for arrival on MBS VOR/DME  
airway radials 212 CW 016.



CATEGORY	A	B	C	D	REIL Rwy 10 HIRL Rwy 10-28 MIRL Rwy 5-23
<b>C</b> CIRCLING	1160-1	558 (600-1)	1460-2½ 858 (900-2½)	NA	

# VOR/DME-A

EC-1, 03 NOV 2022 to 01 DEC 2022

EC-1, 03 NOV 2022 to 01 DEC 2022