

WAAS CH 70316 W17A	APP CRS 175°	Rwy Idg 7000 TDZE 25 Apt Elev 25
----------------------------------------	------------------------	-------------------------------------------------------------

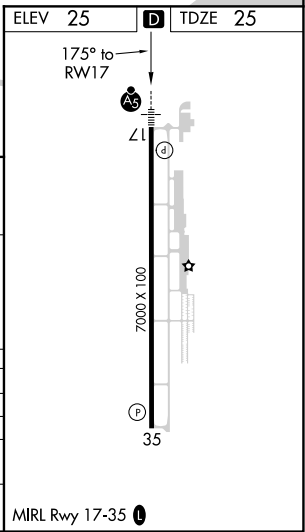
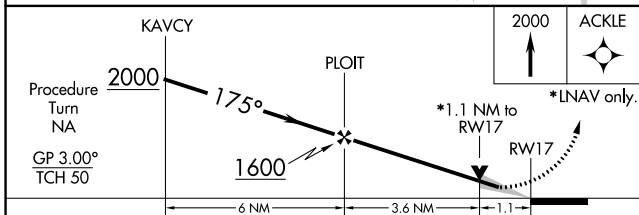
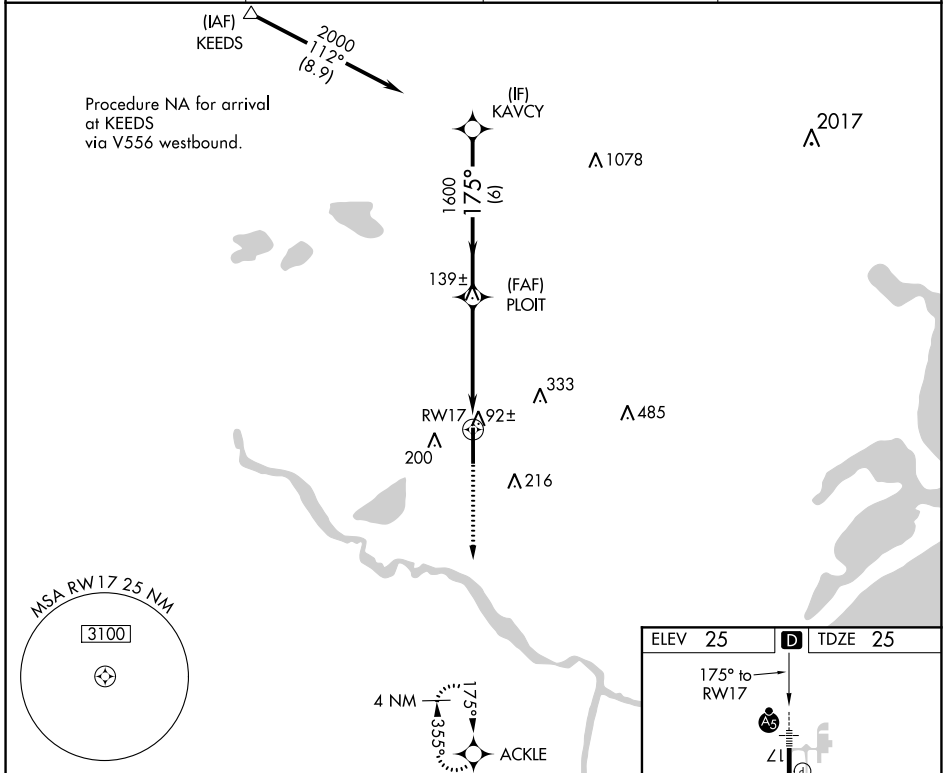
RNAV (GPS) RWY 17

TEXAS GULF COAST RGNL (L.B.X)

⚠ DME/DME RNP-0.3 NA. Baro-VNAV NA below -16°C (4°F). When local altimeter setting not received, use William P. Hobby altimeter setting and increase all DAs/MDAs 100 feet and Circling Cat D visibility ¼ SM. Baro-VNAV and VDP NA when using William P. Hobby altimeter setting. Circling NA east of Rwy 17-35. For inop MALSRL, increase LPV visibility to 1 mile all Cats, LNAV Cat D visibility to ¼ mile.

MALSRL MISSED APPROACH: Climb to 2000 direct ACKLE and hold.

ASOS 119.925	HOUSTON APP CON 134.45 284.0	CLNC DEL 125.2	UNICOM 123.0 (CTAF)
------------------------	----------------------------------------	--------------------------	-------------------------------



CATEGORY	A	B	C	D
LPV DA	282-1/2 257 (300-1/2)			
LNAV/VNAV DA	360-3/4 335 (400-3/4)			
LNAV MDA	420-1/2 395 (400-1/2)		420-1 395 (400-1)	
C CIRCLING	480-1 1/4 455 (500-1 1/4)	500-1 1/4 475 (500-1 1/4)	500-1 1/2 475 (500-1 1/2)	620-2 595 (600-2)

SC-5, 03 NOV 2022 to 01 DEC 2022

SC-5, 03 NOV 2022 to 01 DEC 2022