

(INDIE8.INDIE) 21280

AL-6453 (FAA)

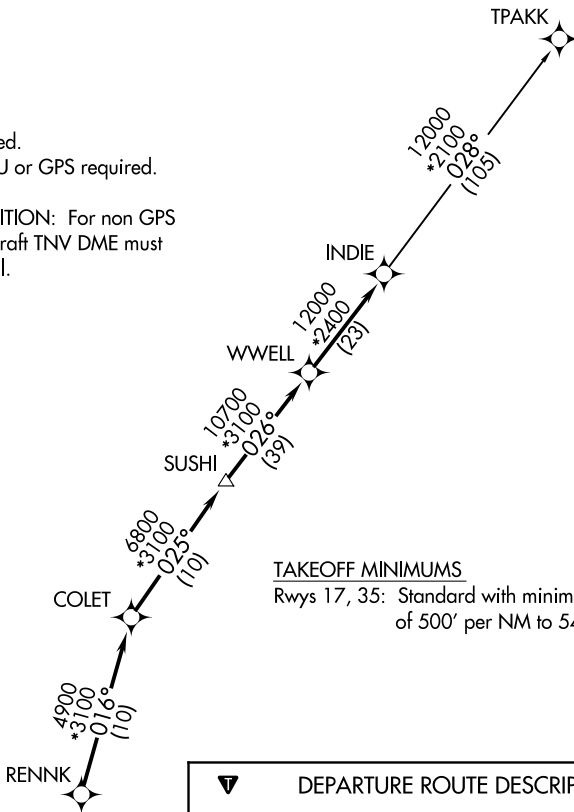
TEXAS GULF COAST RGNL (L.B.X)  
ANGLETON/LAKE JACKSON, TEXAS

# INDIE EIGHT DEPARTURE (RNAV)

**TOP ALTITUDE:  
ASSIGNED BY ATC**

ASOS  
119.925  
CLNC DEL  
125.2  
CTAF  
123.0  
HOUSTON DEP CON  
134.45 284.0

NOTE: RADAR required.  
NOTE: DME/DME/IRU or GPS required.  
NOTE: RNAV 1.  
NOTE: TPAKK TRANSITION: For non GPS equipped aircraft TNV DME must be operational.



### TAKEOFF MINIMUMS

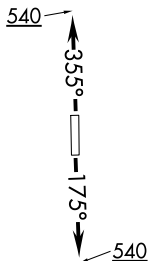
Rwys 17, 35: Standard with minimum climb of 500' per NM to 540.

### DEPARTURE ROUTE DESCRIPTION

**TAKEOFF RUNWAY 17:** Climb on heading 175° to 540 for RADAR vectors to RENNK, thence . . .  
**TAKEOFF RUNWAY 35:** Climb on heading 355° to 540 for RADAR vectors to RENNK, thence . . .

. . . on track 016° to COLET, then on track 025° to SUSHI, then on track 026° to WWELL, then on track 026° to INDIE, then on (transition).  
Maintain ATC assigned altitude. Expect filed altitude 10 minutes after departure.

**TPAKK TRANSITION (INDIE8.TPAKK)**



NOTE: Chart not to scale.

# INDIE EIGHT DEPARTURE (RNAV)

(INDIE8.INDIE) 07OCT21

ANGLETON/LAKE JACKSON, TEXAS  
TEXAS GULF COAST RGNL (L.B.X)

SC-5, 03 NOV 2022 to 01 DEC 2022

SC-5, 03 NOV 2022 to 01 DEC 2022