

WAAS CH 42603	APP CRS 053°	Rwy Idg TDZE Apt Elev	5001 798 802
-------------------------	------------------------	-----------------------------	---

RNAV (GPS) RWY 5

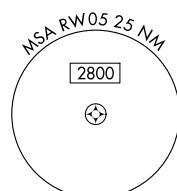
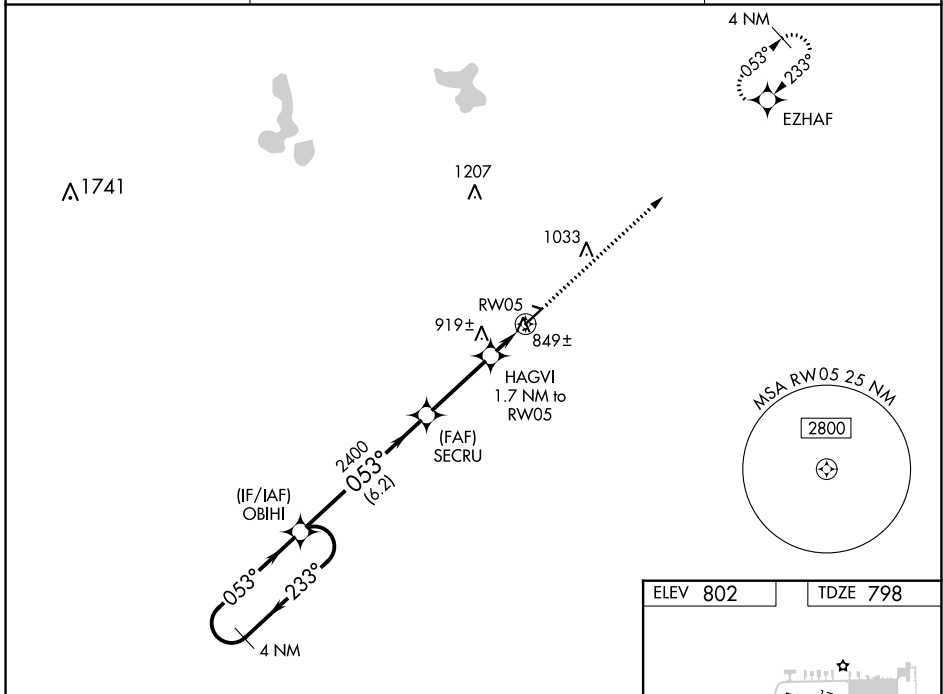
LENAWEE COUNTY (ADG)

RNP APCH - GPS.

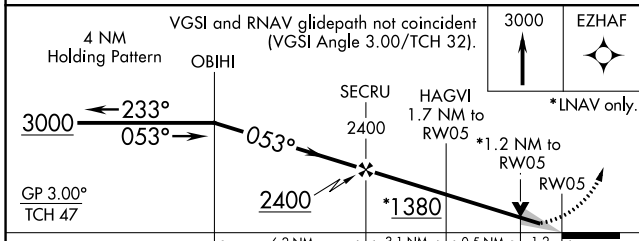
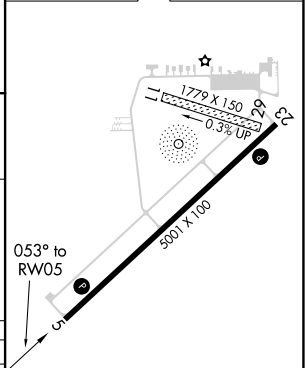
⚠ For uncompensated Baro-VNAV systems, LNAV/VNAV NA below -16°C or above 54°C.
⚠ When local altimeter setting not received, use Ann Arbor Muni altimeter setting; increase LPV all Cats DA to 1114 feet and all visibilities 1/8 SM; increase LNAV/VNAV all Cats DA to 1185 feet; increase all MDA 80 feet and visibility LNAV Cats C/D 1/4 SM. Baro-VNAV and VDP NA when using Ann Arbor Muni altimeter setting.

MISSED APPROACH:
Climb to 3000 direct EZHAF and hold.

ASOS 118.375	TOLEDO APP CON 134.35 317.55	UNICOM 122.8 (CTAF)
------------------------	--	-------------------------------



ELEV 802	TDZE 798
----------	----------



CATEGORY	A	B	C	D
LPV DA	1048-3/4		250 (300-3/4)	
LNAV/VNAV DA	1119-1 1/4		321 (400-1 1/4)	
LNAV MDA	1200-1	402 (500-1)	1200-1 1/4	402 (500-1 1/4)

HIRL Rwy 5-23 **⓪**
REIL Rwy 5 **⓪**

EC-1, 03 NOV 2022 to 01 DEC 2022

EC-1, 03 NOV 2022 to 01 DEC 2022