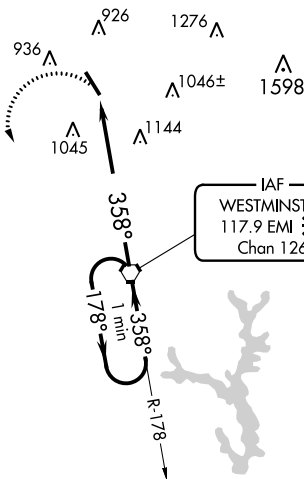
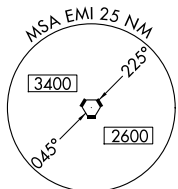


VORTAC EMI <b>117.9</b> Chan <b>126</b>	APP CRS <b>358°</b>	Rwy Idg TDZE Apt Elev	<b>5100</b> <b>788</b> <b>789</b>
-----------------------------------------------	------------------------	-----------------------------	-----------------------------------------

# VOR RWY 34

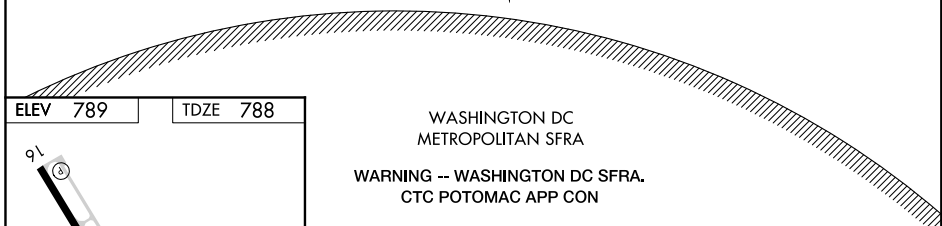
CARROLL COUNTY RGNL/JACK B POAGE FLD (DMW)

<p>▽ ▲ NA</p>		<p>MISSED APPROACH: Climbing left turn to 2900 direct EMI VORTAC and hold.</p>	
AWOS-3 <b>121.25</b>	POTOMAC APP CON <b>125.525 291.625</b>	GCO <b>121.725</b>	UNICOM <b>122.7 (CTAF) 0</b>

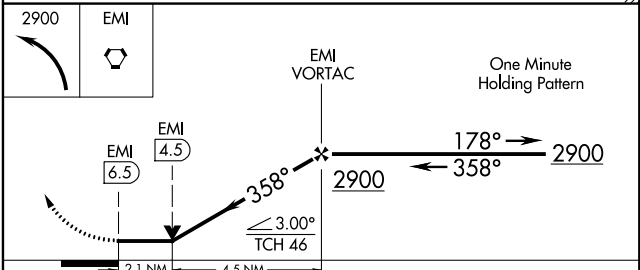


NE-3, 03 NOV 2022 to 01 DEC 2022

NE-3, 03 NOV 2022 to 01 DEC 2022



ELEV <b>789</b>	TDZE <b>788</b>
<p>REIL Rwy 16 and 34 MIRL Rwy 16-34</p>	
<p>FAF to MAP 6.5 NM</p>	
Knots	60 90 120 150 180
Min:Sec	6:30 4:20 3:15 2:36 2:10



CATEGORY	A	B	C	D
S-34	1480-1	692 (700-1)	1480-2 692 (700-2)	NA
CIRCLING	1480-1	691 (700-1)	1500-2 711 (800-2)	NA

# VOR RWY 34