

WESTMINSTER, MARYLAND

AL-5533 (FAA)

21140

WAAS CH <b>82117</b> <b>W34A</b>	APP CRS <b>339°</b>	Rwy Idg <b>5100</b> TDZE <b>788</b> Apt Elev <b>789</b>
--	------------------------	---

# RNAV (GPS) RWY 34

CARROLL COUNTY RGNL/JACK B POAGE FLD (DMW)

RNP APCH

**▼** For uncompensated Baro-VNAV systems, LNAV/VNAV NA below -16°C (4°F) or above 54°C (130°F).

**▲**

MISSED APPROACH: Climb to 3000 direct UNYTS and hold

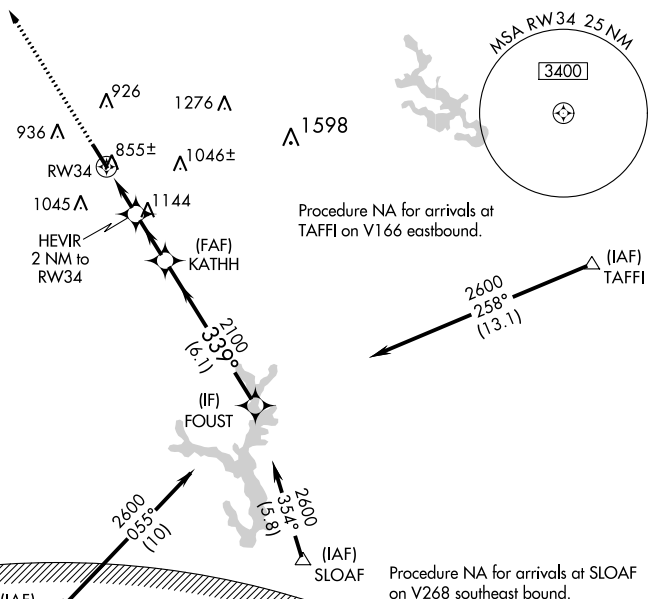
AWOS-3  
**121.25**

POTOMAC APP CON  
**125.525 291.625**

GCO  
**121.725**

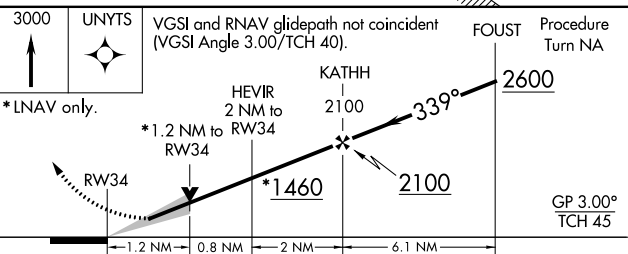
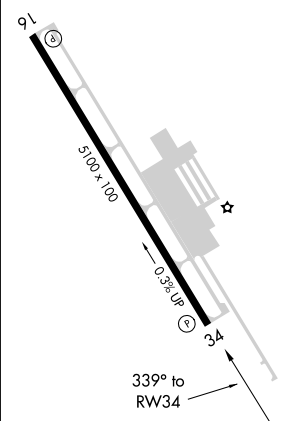
UNICOM  
**122.7 (CTAF) 0**

MISSED APCH FIX



ELEV 789 TDZE 788

WARNING -- WASHINGTON DC SFRA. CTC POTOMAC APP CON



CATEGORY	A	B	C	D
LPV DA	988-1 200 (200-1)			NA
LNAV/VNAV DA	1105-1½ 317 (400-1¼)			NA
LNAV MDA	1180-1 392 (400-1)			NA
CIRCLING	1320-1 531 (600-1)	1400-1 611 (700-1)	1500-2 711 (800-2)	NA

WESTMINSTER, MARYLAND  
Amdt 1C 20MAY21

CARROLL COUNTY RGNL/JACK B POAGE FLD (DMW)  
39°36'N-77°00'W

# RNAV (GPS) RWY 34

NE-3, 03 NOV 2022 to 01 DEC 2022

NE-3, 03 NOV 2022 to 01 DEC 2022