

APP CRS	Rwy Idg	3779
263°	TDZE	632
	Apt Elev	634

RNAV (GPS) RWY 26

GRIFFITH-MERRILLVILLE (Ø5C)

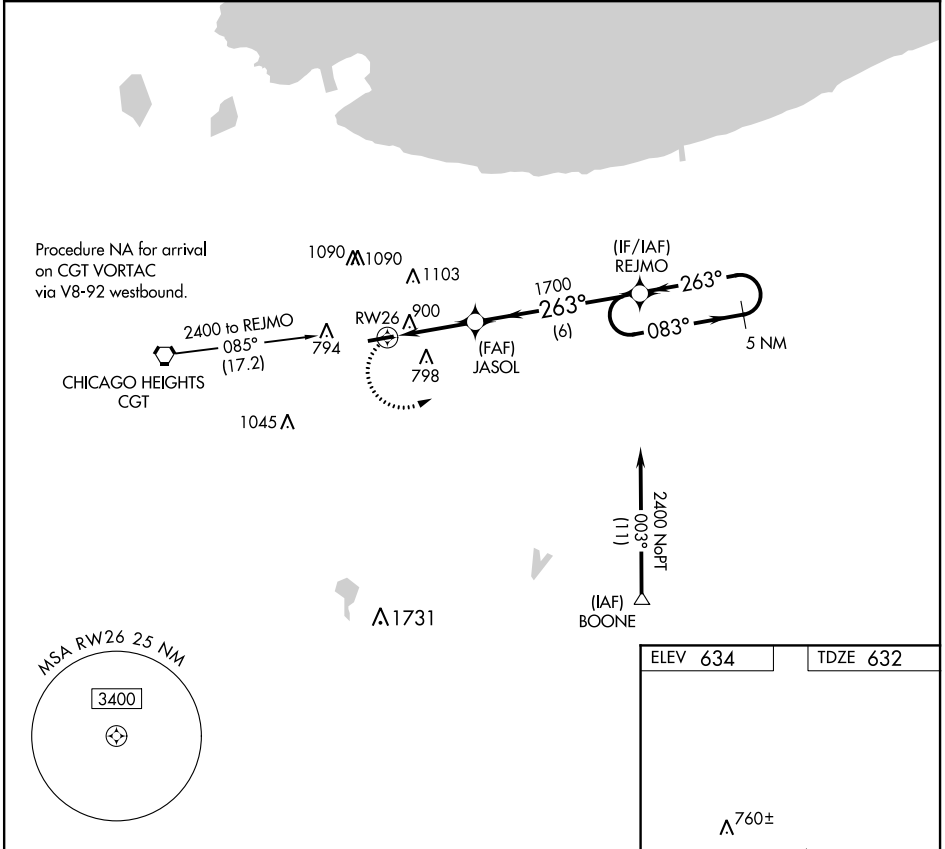
RNP APCH

▼ Obtain local altimeter setting on CTAF; when not received use Chicago Midway
 ▲ NA Init altimeter setting and increase all MDAs 60 feet. Visibility reduction by
 helicopters NA. Procedure NA at night.

MISSED APPROACH: Climbing left
 turn to 2400 direct REJMO and hold.

CHICAGO APP CON
133.1 285.6

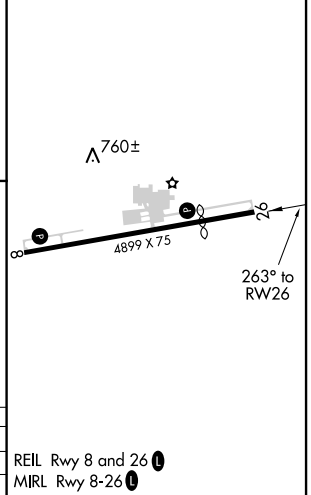
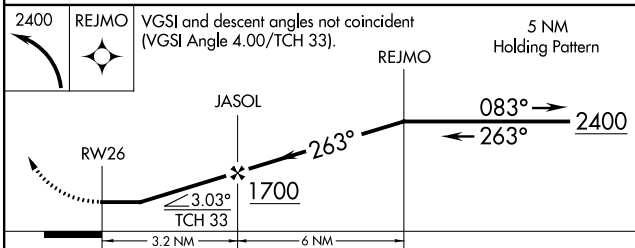
UNICOM
123.0 (CTAF) 0



EC-2, 03 NOV 2022 to 01 DEC 2022

EC-2, 03 NOV 2022 to 01 DEC 2022

ELEV 634	TDZE 632
----------	----------



CATEGORY	A	B	C	D
LNNAV MDA	1160-1	528 (600-1)		NA
CIRCLING	1200-1	566 (600-1)		NA