

(HURCN3.HURCN) 22139

AL-5349 (FAA)

MIAMI EXEC (TMB)  
MIAMI, FLORIDA

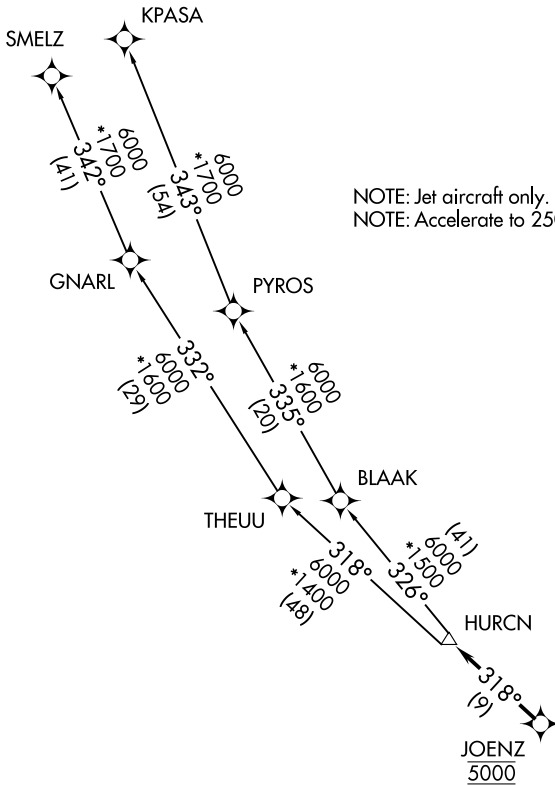
# HURCN THREE DEPARTURE (RNAV)

RNAV-1 DME/DME/IRU or GPS.

RADAR required.

**TOP ALTITUDE:  
ASSIGNED BY ATC**

ATIS  
124.0  
CLNC DEL  
133.0  
GND CON  
121.7  
TAMiami TOWER ★  
118.9 (CTAF)  
MIAMI DEP CON  
125.5 354.1



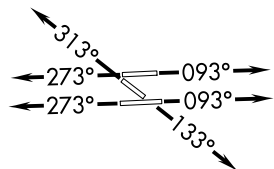
NOTE: Jet aircraft only.  
NOTE: Accelerate to 250K, if unable, advise ATC.

SE-3, 03 NOV 2022 to 01 DEC 2022

SE-3, 03 NOV 2022 to 01 DEC 2022

### TAKEOFF MINIMUMS

- Rwy 9L: Standard with minimum climb of 500' per NM to 1300.
- Rwy 9R: Standard with minimum climb of 500' per NM to 1500.
- Rwy 13: Standard with minimum climb of 500' per NM to 1800.
- Rwy 27L: Standard with minimum climb of 500' per NM to 1900.
- Rwy 27R: Standard with minimum climb of 500' per NM to 1700.
- Rwy 31: Standard with minimum climb of 500' per NM to 1400.



NOTE: Chart not to scale.

(NARRATIVE ON FOLLOWING PAGE)

HURCN THREE DEPARTURE (RNAV)  
(HURCN3.HURCN) 19MAY22

MIAMI, FLORIDA  
MIAMI EXEC (TMB)