

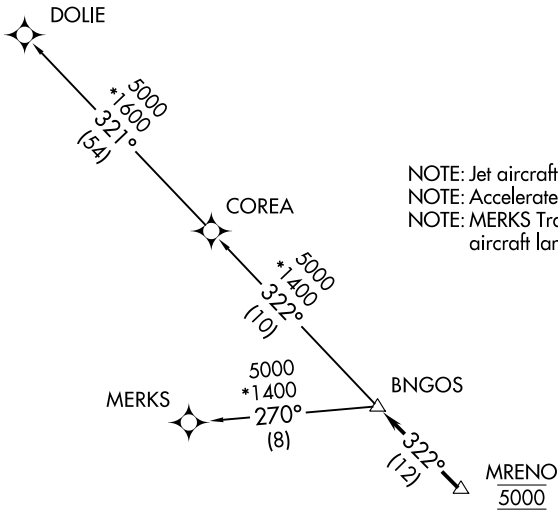
BNGOS THREE DEPARTURE (RNAV)

RNAV-1 DME/DME/IRU or GPS.

RADAR required.

**TOP ALTITUDE:
ASSIGNED BY ATC**

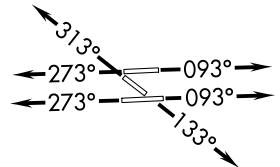
ATIS
124.0
CLNC DEL
133.0
GND CON
121.7
TAMiami TOWER ★
118.9 (CTAF)
MIAMI DEP CON
125.5 354.1



NOTE: Jet aircraft only.
NOTE: Accelerate to 250K, if unable, advise ATC.
NOTE: MERKS Transition ATC assigned only except aircraft landing: MKY, RSW, APF, PGD and FMY.

TAKEOFF MINIMUMS

- Rwy 9L: Standard with minimum climb of 500' per NM to 1300.
- Rwy 9R: Standard with minimum climb of 500' per NM to 1500.
- Rwy 13: Standard with minimum climb of 500' per NM to 1800.
- Rwy 27L: Standard with minimum climb of 500' per NM to 1900.
- Rwy 27R: Standard with minimum climb of 500' per NM to 1700.
- Rwy 31: Standard with minimum climb of 500' per NM to 1400.



NOTE: Chart not to scale.

DEPARTURE ROUTE DESCRIPTION

TAKEOFF RUNWAYS 9L/R: Climb on heading 093° or as assigned for RADAR vectors to cross MRENO at 5000, thence. . .

TAKEOFF RUNWAY 13: Climb on heading 133° or as assigned for RADAR vectors to cross MRENO at 5000, thence. . .

TAKEOFF RUNWAYS 27L/R: Climb on heading 273° or as assigned for RADAR vectors to cross MRENO at 5000, thence. . .

TAKEOFF RUNWAY 31: Climb on heading 313° or as assigned for RADAR vectors to cross MRENO at 5000, thence. . .

. . . on track 322° to BNGOS, then on transition, maintain ATC assigned altitude, expect clearance to filed altitude within 10 minutes after departure.

- COREA TRANSITION (BNGOS3.COREA)
- DOLIE TRANSITION (BNGOS3.DOLIE)
- MERKS TRANSITION (BNGOS3.MERKS)