

| | | | |
|--|------------------------|-----------------------------|---|
| VORTAC OSH 116.75 Chan 114 (Y) | APP CRS 165° | Rwy Idg TDZE Apt Elev | 5941 791 808 |
|--|------------------------|-----------------------------|---|

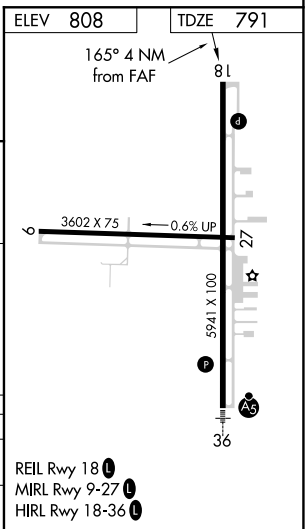
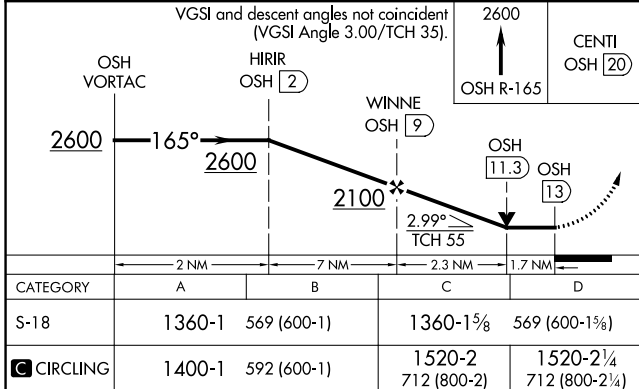
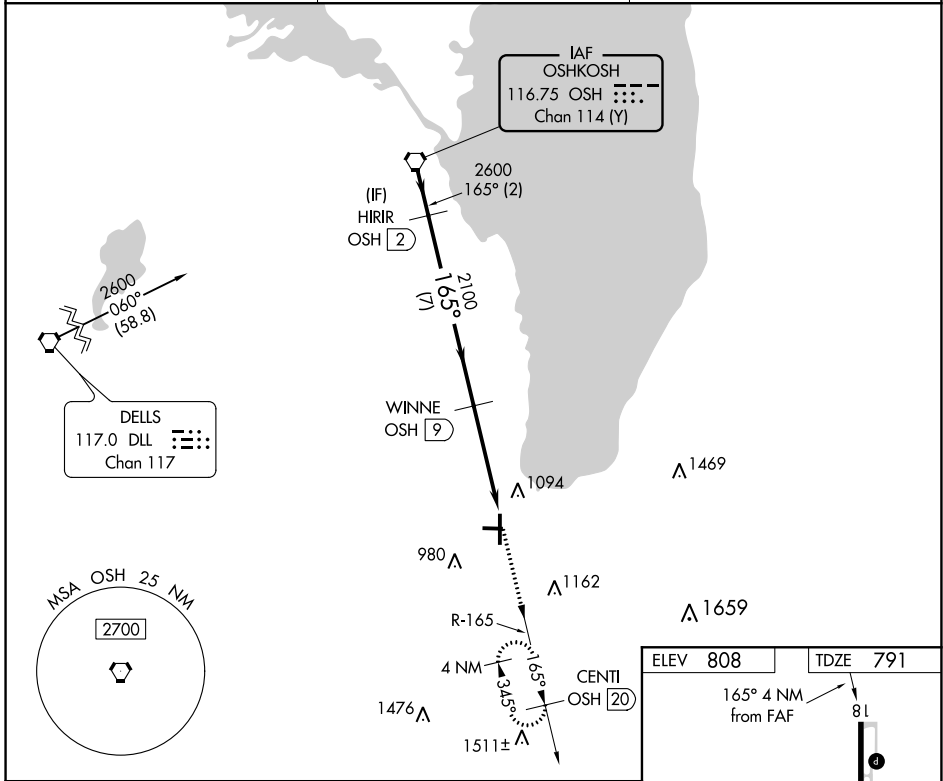
VOR RWY 18

FOND DU LAC COUNTY (F.L.D)

⚠ Helicopter visibility reduction below 3/4 SM NA. When local altimeter setting not received, use Oshkosh altimeter setting: increase all MDA 40 feet; increase S-18 Cat C/D visibility 1/8 mile, and increase Circling Cat C/D visibility 1/4 mile. Night landing: Rwy 9, 27 NA. VDP NA when using Oshkosh altimeter setting. DME required.

MISSED APPROACH: Climb to 2600 on OSH VORTAC R-165 to CENTI/OSH 20 DME and hold.

| | | |
|----------------------|---|----------------------------------|
| ASOS 134.0 | MILWAUKEE APP CON 127.0 263.075 | UNICOM 123.05 (CTAF) 0 |
|----------------------|---|----------------------------------|



EC-3, 03 NOV 2022 to 01 DEC 2022

EC-3, 03 NOV 2022 to 01 DEC 2022