

WAAS CH 50301 W25A	APP CRS 246°	Rwy Idg TDZE Apt Elev	5500 515 529
---------------------------------	------------------------	-----------------------------	---

RNAV (GPS) RWY 25

AIKEN RGNL (AIK)

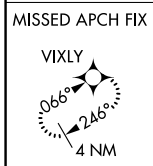
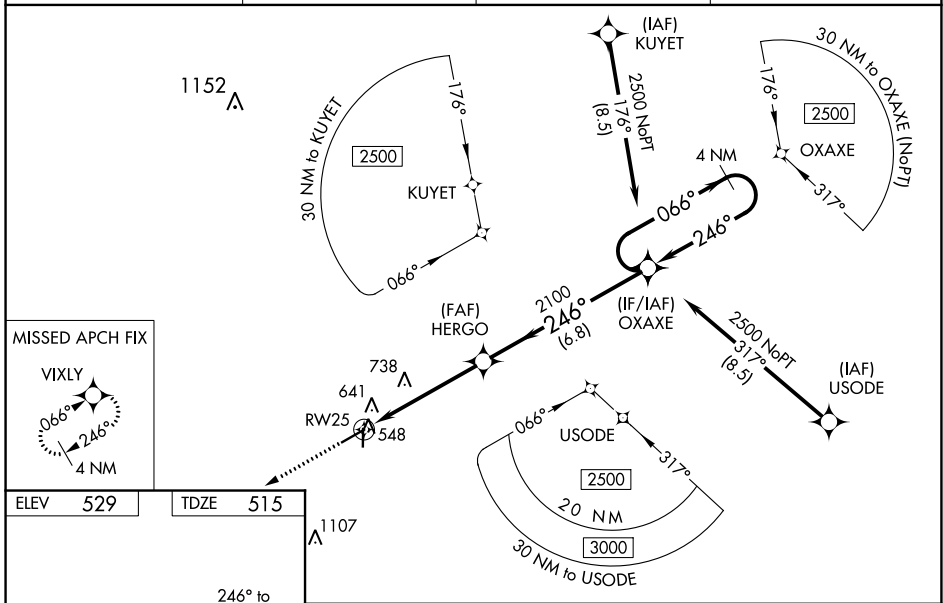
RNP APCH.

⚠ Baro-VNAV NA when using Augusta Rgnl at Bush Fld altimeter setting.
⚠ NA For uncompensated Baro-VNAV systems, LNAV/VNAV NA below -16°C or above 40°C. VDP NA with Augusta Rgnl at Bush Fld altimeter setting. When local altimeter setting not received, use Augusta Rgnl at Bush Fld altimeter setting: increase LPV all Cats DA to 869 feet, LNAV/VNAV all Cats DA to 927 feet and all visibilities ¾ mile; increase all MDA 120 feet and Cat C/D visibilities ¼ mile. For inop ODALS, increase LPV all Cats visibility to ¾ mile, LNAV/VNAV all Cats to 1½ mile and LNAV Cat C/D to 1¼ mile. For inop ODALS when using Augusta Rgnl at Bush Fld altimeter setting, increase LPV all Cats visibility to 1¼ mile, LNAV/VNAV all Cats to 1½ mile and LNAV Cat D to 1¾ mile.

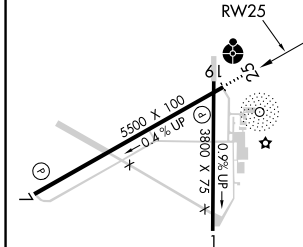
ODALS

MISSED APPROACH: Climb to 3000 direct VIXLY and hold.

AWOS-3 118.025	AUGUSTA APP CON * 119.15 284.625	CLNC DEL 126.075	UNICOM 122.8 (CTAF)
--------------------------	--	----------------------------	-------------------------------



ELEV 529	TDZE 515
----------	----------



3000 VIXLY VGSI and RNAV glidepath not coincident (VGSI Angle 3.00/TCH 27).

4 NM Holding Pattern

*LNAV only. *1.3 NM to RWY 25

HERGO 2100, 246° to 2100, 066° to 2500, 246°

GP 3.00° TCH 45

CATEGORY	A	B	C	D
LPV DA	765-¾ 250 (300-¾)			
LNAV/VNAV DA	823-1 308 (300-1)			
LNAV MDA	940-¾ 425 (500-¾)		940-1/8 425 (500-1/8)	

SE-2, 03 NOV 2022 to 01 DEC 2022

SE-2, 03 NOV 2022 to 01 DEC 2022