

NDB AIK 347	APP CRS 225°	Rwy Idg TDZE Apt Elev	5500 515 529
-----------------------	------------------------	-----------------------------	---

NDB RWY 25

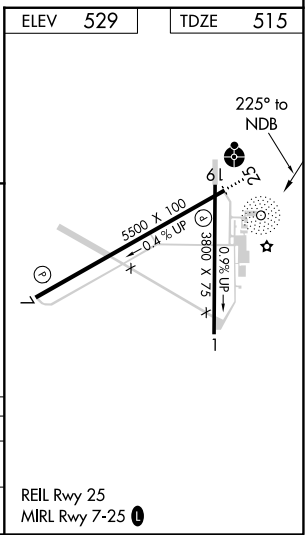
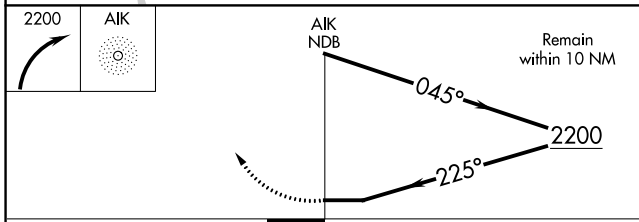
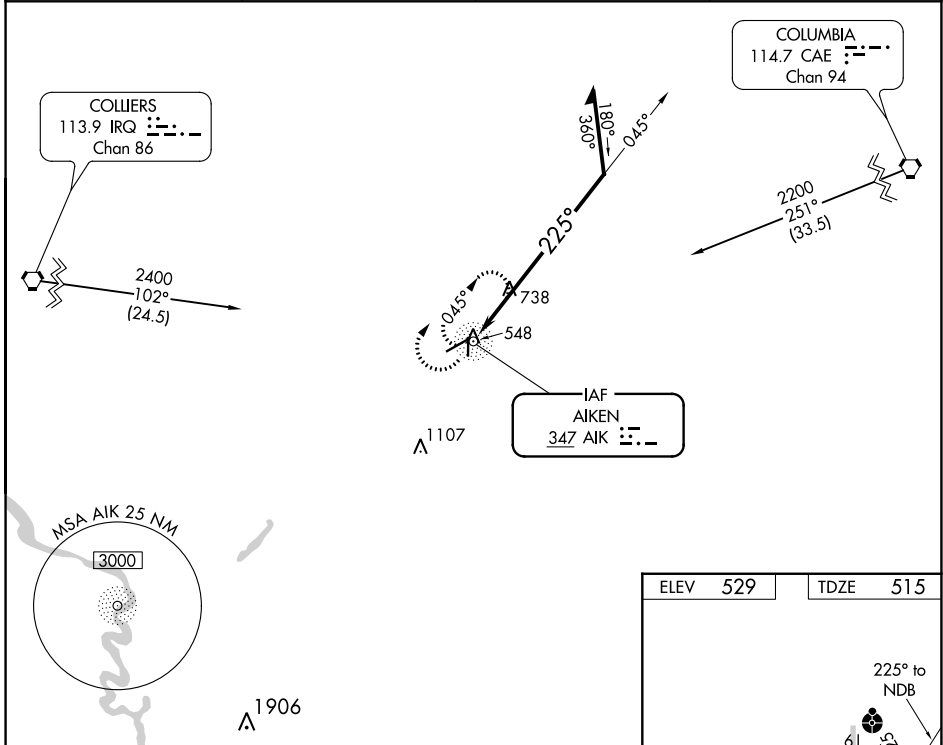
AIKEN RGNL (AIK)

NA When local altimeter setting not received, use Augusta Rgnl at Bush Fld altimeter setting and increase all MDAs 120 feet; increase S-25 Cats B/C/D and Circling Cat C visibility ¼ SM. For inop ODALS, increase S-25 Cat C/D visibility to 1 7/8 mile. For inop ODALS when using Augusta Rgnl at Bush Fld altimeter setting, increase S-25 Cat C/D visibility to 2 1/2 mile. Helicopter visibility reduction below 3/4 SM NA.

ODALS

MISSED APPROACH: Climbing right turn to 2200 in AIK NDB holding pattern.

AWOS-3 118.025	AUGUSTA APP CON ★ 119.15 284.625	CLNC DEL 126.075	UNICOM 122.8 (CTAF)
--------------------------	--	----------------------------	-------------------------------



CATEGORY	A	B	C	D
S-25	1180-3/4	665 (700-3/4)	1180-1 3/4	665 (700-1 3/4)
CIRCLING	1180-1	651 (700-1)	1180-1 3/4 651 (700-1 3/4)	1420-3 891 (900-3)

SE-2, 03 NOV 2022 to 01 DEC 2022

SE-2, 03 NOV 2022 to 01 DEC 2022