

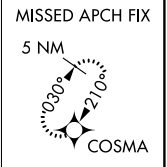
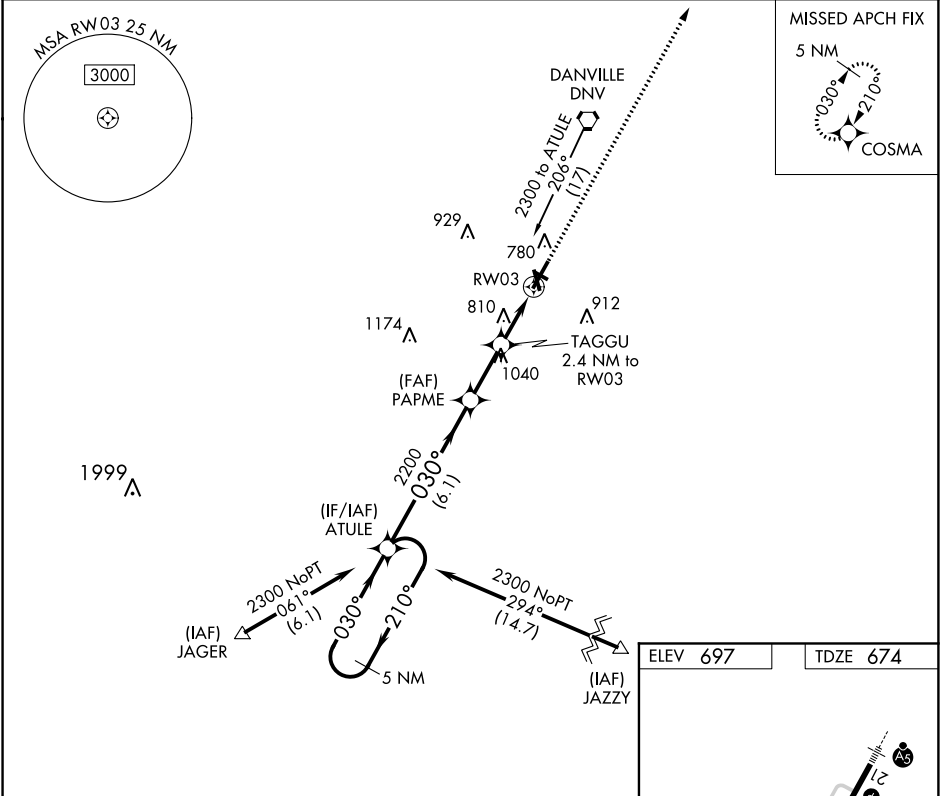
# RNAV (GPS) RWY 3 VERMILION RGNL (DNTV)

APP CRS <b>030°</b>	Rwy Idg <b>6006</b>
	TDZE <b>674</b>
	Apt Elev <b>697</b>

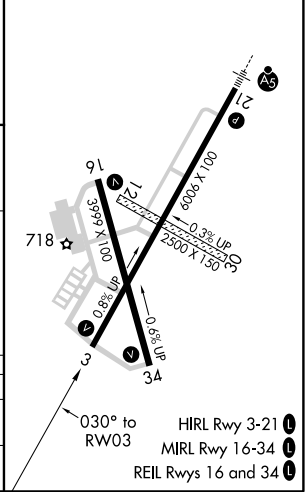
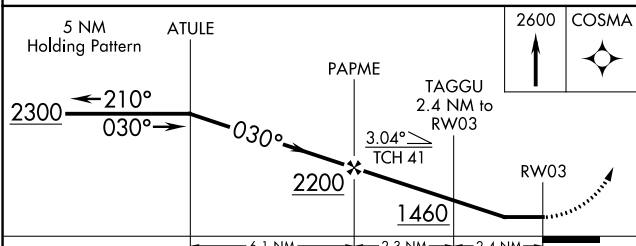
**⚠** When local altimeter setting not received, use University of Illinois/Willard altimeter setting and increase all MDAs 100 feet; increase Circling Cat C visibility ¼ SM and Cat D visibility ½ SM. Circling NA to Rwys 12 and 30. DME/DME RNP-0.3 NA. Helicopter visibility reduction below ¾ SM NA.

MISSED APPROACH: Climb to 2600 direct COSMA and hold.

AWOS-3 <b>119.275</b>	CHAMPAIGN APP CON ★ <b>121.35 285.65</b>	CLNC DEL <b>121.7</b>	UNICOM <b>122.7 (CTAF) 0</b>
--------------------------	---	--------------------------	---------------------------------



ELEV 697	TDZE 674
----------	----------



CATEGORY	A	B	C	D
LNAV MDA	1120-1	446 (500-1)	1120-1½ 446 (500-1½)	1120-1½ 446 (500-1½)
CIRCLING	1160-1	463 (500-1)	1240-1½ 543 (600-1½)	1340-2 643 (700-2)

EC-3, 03 NOV 2022 to 01 DEC 2022

EC-3, 03 NOV 2022 to 01 DEC 2022