


WAAS CH 58004 W21A	APP CRS 210°	Rwy Idg TDZE Apt Elev	6006 697 697
--	------------------------	-----------------------------	---

RNAV (GPS) RWY 21

VERMILION RGNL (DNV)

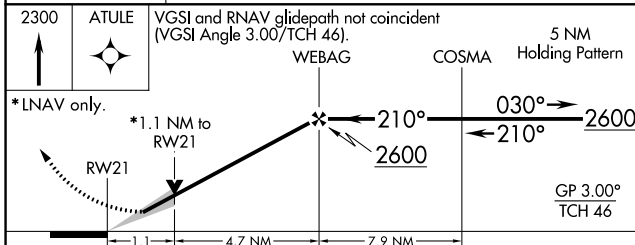
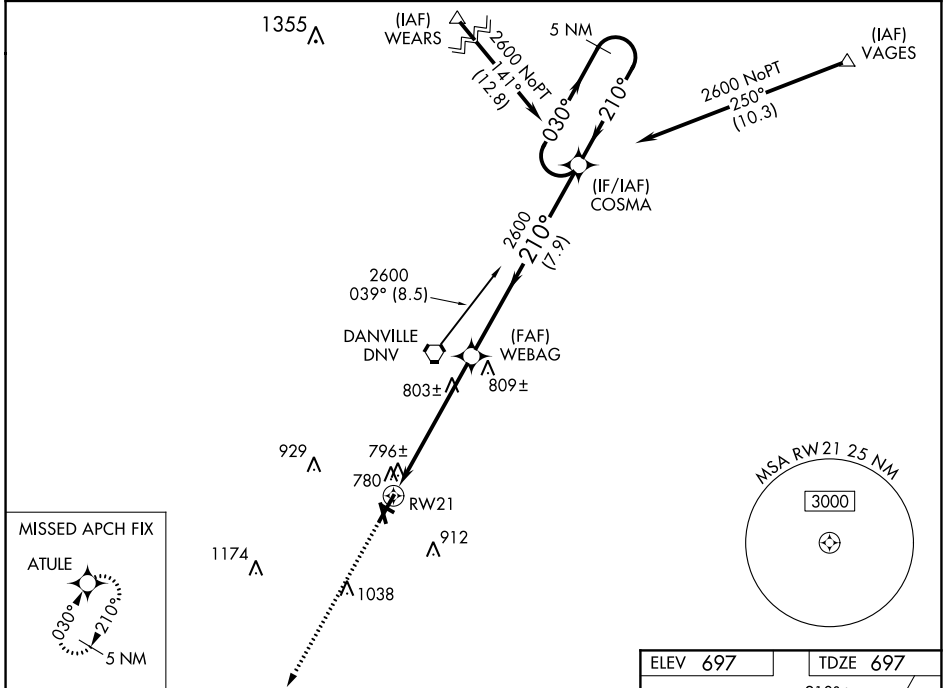
⚠ When local altimeter setting not received, use University of Illinois/Willard altimeter setting and increase LPV DA to 1074 feet and LNAV/VNAV DA to 1153 feet; increase all MDAs 100 feet and Circling Cat C visibility ¼ SM and Cat D visibility ½ SM. Circling NA to Rwy's 12 and 30. Baro-VNAV and VDP NA when using University of Illinois/Willard altimeter setting. For uncompensated Baro-VNAV systems, LNAV/VNAV NA below -1.6°C (4°F) or above 47°C (116°F). For inop MALS/R, increase LPV all Cats visibility to 1 mile and LNAV Cat D visibility to 1 ¼ mile. DME/DME RNP-0.3 NA.

MALS/R



MISSED APPROACH:
Climb to 2300 direct
ATULE and hold.

AWOS-3 119.275	CHAMPAIGN APP CON * 121.35 285.65	CLNC DEL 121.7	UNICOM 122.7 (CTAF)
--------------------------	---	--------------------------	-------------------------------



ELEV 697	TDZE 697
----------	----------

210° to RW21

91 718

3999 X 1.00

100 X 0.88

2500 X 1.50

0.3% UP

0.6% UP

34

HIRL Rwy 3-21

MIRL Rwy 16-34

REIL Rwy 16 and 34

CATEGORY	A	B	C	D
LPV DA	990-½	293 (300-½)		
LNAV/VNAV DA	1069-¾	372 (400-¾)		
LNAV MDA	1080-½	383 (400-½)	1080-1	383 (400-1)
CIRCLING	1160-1	463 (500-1)	1240-1½	1340-2
			543 (600-1½)	643 (700-2)