

DUBLIN, VIRGINIA

AL-5084 (FAA)

22251

LOC I-PSK 110.9	APP CRS 058°	Rwy Idg TDZE Apt Elev	6201 2105 2105
---------------------------	------------------------	-----------------------------	-------------------------------------------

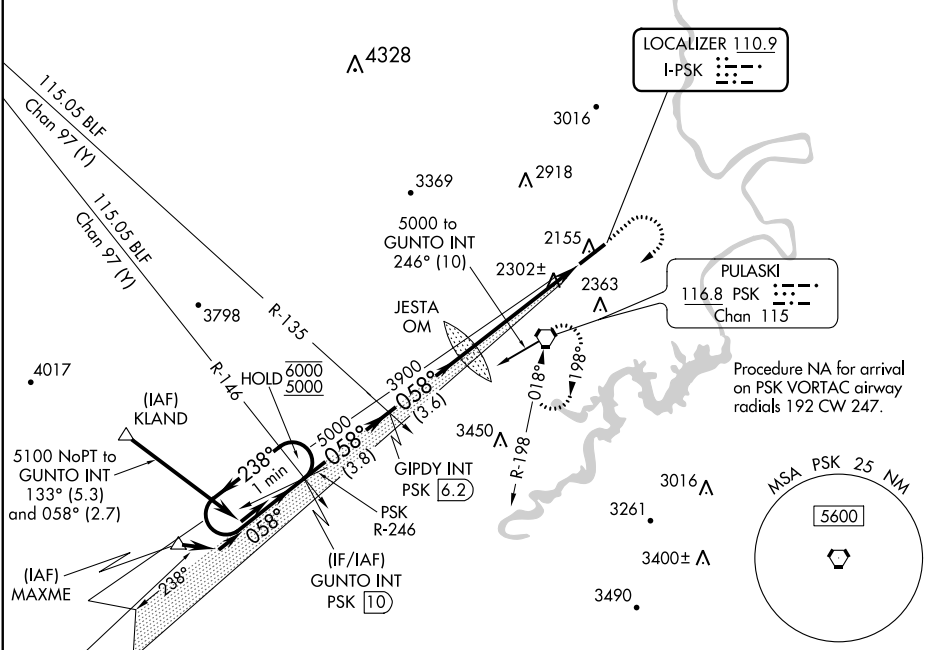
ILS or LOC Z RWY 6

NEW RIVER VALLEY (PSK)

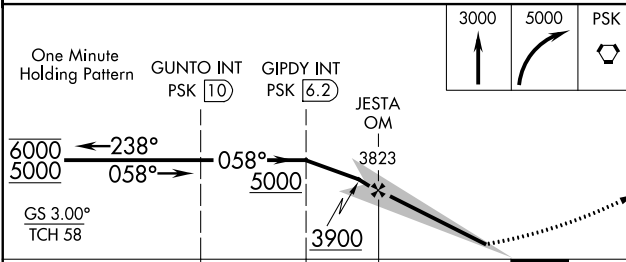
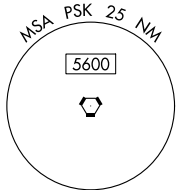
NA Inop table does not apply to S-ILS 6 all Cats and S-LOC 6 Cats A and B. For inop ALS, increase S-LOC 6 Cat C/D visibility to 1 3/8 SM. Circling NA for Cat D northwest of Rwy 6-24.

MALSR
MISSED APPROACH: Climb to 3000 then climbing right turn to 5000 direct PSK VORTAC and hold, continue climb-in-hold to 5000.

AWOS-3 127.375	ROANOKE APP CON 126.0 339.8	ROANOKE CLNC DEL 121.7	UNICOM 122.7 (CTAF)
--------------------------	---------------------------------------	----------------------------------	-------------------------------



Procedure NA for arrival on PSK VORTAC airway radials 192 CW 247.



CATEGORY	A	B	C	D
S-ILS 6		2305-1	200 (200-1)	
S-LOC 6		2560-1	455 (500-1)	
CIRCLING	2620-1 515 (600-1)	2680-1 575 (600-1)	2780-2 675 (700-2)	2780-2 1/4 675 (700-2 1/4)

ELEV 2105	TDZE 2105
2174± 2113± 2166± 2268 0.5% UP 6201 x 150 058° 5.1 NM from FAF HIRL Rwy 6-24 REIL Rwy 24	
FAF to MAP 5.1 NM	
Knots	60 90 120 150 180
Min:Sec	5:06 3:24 2:33 2:02 1:42

DUBLIN, VIRGINIA
Amdt 5B 25FEB21

37°08'N-80°41'W

NEW RIVER VALLEY (PSK)

ILS or LOC Z RWY 6

NE-3, 03 NOV 2022 to 01 DEC 2022

NE-3, 03 NOV 2022 to 01 DEC 2022