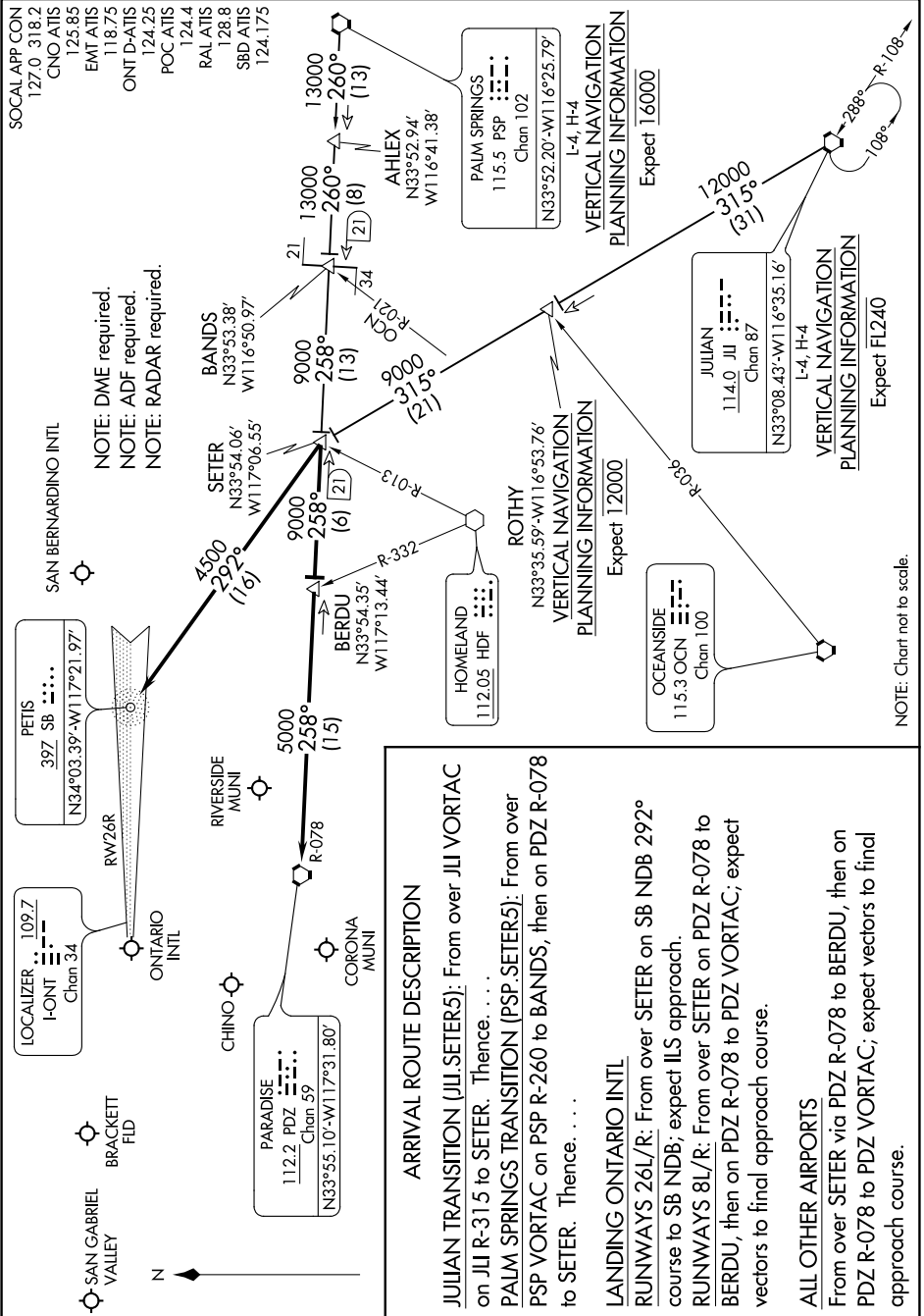


# SETER FIVE ARRIVAL

AL-965 (FAA)

ONTARIO, CALIFORNIA

SW-3, 03 NOV 2022 to 01 DEC 2022



NOTE: DME required.  
NOTE: ADF required.  
NOTE: RADAR required.

**ARRIVAL ROUTE DESCRIPTION**

**JULIAN TRANSITION (JLI.SETER5):** From over JLI VORTAC on JLI R-315 to SETER. Thence, . . .

**PALM SPRINGS TRANSITION (PSP.SETER5):** From over PSP VORTAC on PSP R-260 to BANDS, then on PDZ R-078 to SETER. Thence, . . .

**LANDING ONTARIO INTL**

**RUNWAYS 26L/R:** From over SETER on SB NDB 292° course to SB NDB; expect ILS approach.

**RUNWAYS 8L/R:** From over SETER on PDZ R-078 to BERDU, then on PDZ R-078 to PDZ VORTAC; expect vectors to final approach course.

**ALL OTHER AIRPORTS**

From over SETER via PDZ R-078 to BERDU, then on PDZ R-078 to PDZ VORTAC; expect vectors to final approach course.

# SETER FIVE ARRIVAL

(SETER.SETER5) 17AUG17

ONTARIO, CALIFORNIA

SW-3, 03 NOV 2022 to 01 DEC 2022