

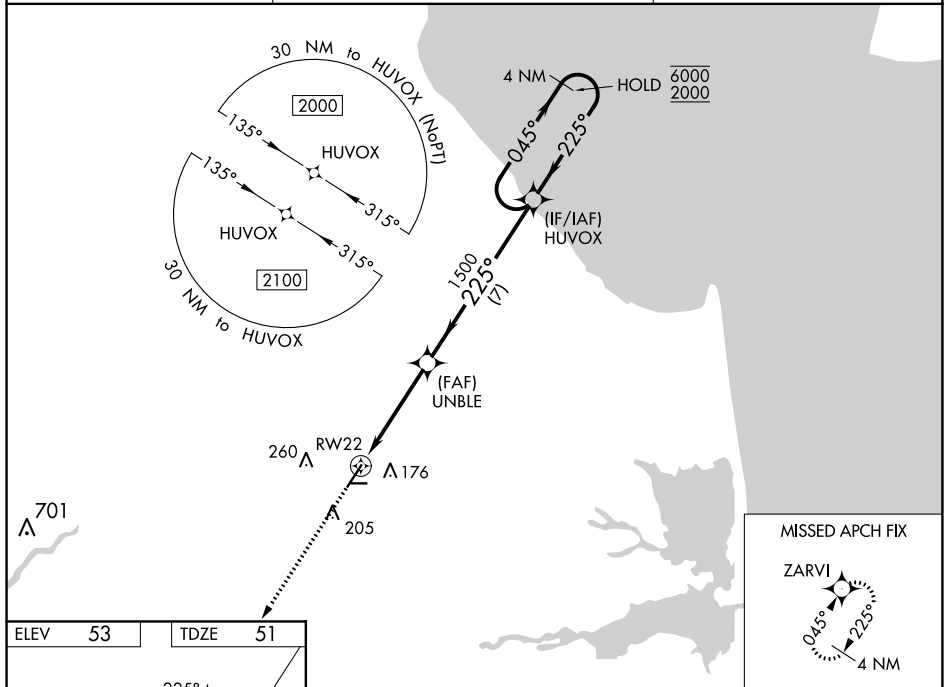
# RNAV (GPS) RWY 22

DELAWARE COASTAL (GED)

WAAS CH <b>60921</b> <b>W22A</b>	APP CRS <b>225°</b>	Rwy Idg TDZE Apt Elev	<b>5331</b> <b>51</b> <b>53</b>
----------------------------------------	------------------------	-----------------------------	---------------------------------------

RNP APCH.		MISSED APPROACH: Climb to 2000 direct ZARVI and hold.
<p><b>⚠</b> Rwy 22 helicopter visibility reduction below <math>\frac{3}{4}</math> NA. For uncompensated Baro-VNAV systems, LNAV/VNAV NA below -11°C or above 54°C.</p>		

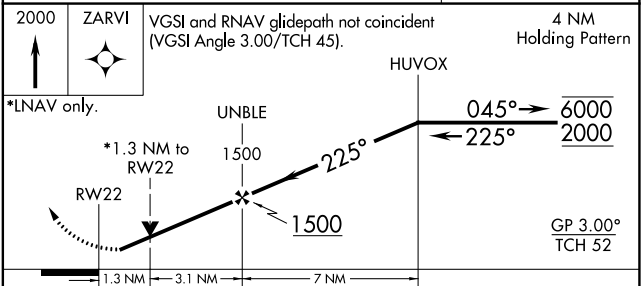
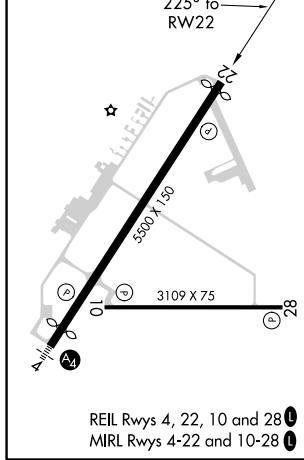
ASOS <b>118.375</b>	DOVER APP CON <b>132.425 257.875</b>	UNICOM <b>123.0 (CTAF) 0</b>
------------------------	-----------------------------------------	---------------------------------



NE-3, 03 NOV 2022 to 01 DEC 2022

NE-3, 03 NOV 2022 to 01 DEC 2022

ELEV 53	TDZE 51
---------	---------



CATEGORY	A	B	C	D
LPV DA		321- $\frac{7}{8}$	270 (300- $\frac{7}{8}$ )	
LNAV/VNAV DA		446-1 $\frac{1}{8}$	395 (400-1 $\frac{1}{8}$ )	
LNAV MDA	500-1	449 (500-1)	500-1 $\frac{1}{8}$	449 (500-1 $\frac{1}{8}$ )
<input checked="" type="checkbox"/> CIRCLING	560-1 507 (600-1)	580-1 527 (600-1)	720-1 $\frac{3}{4}$ 667 (700-1 $\frac{3}{4}$ )	720-2 667 (700-2)