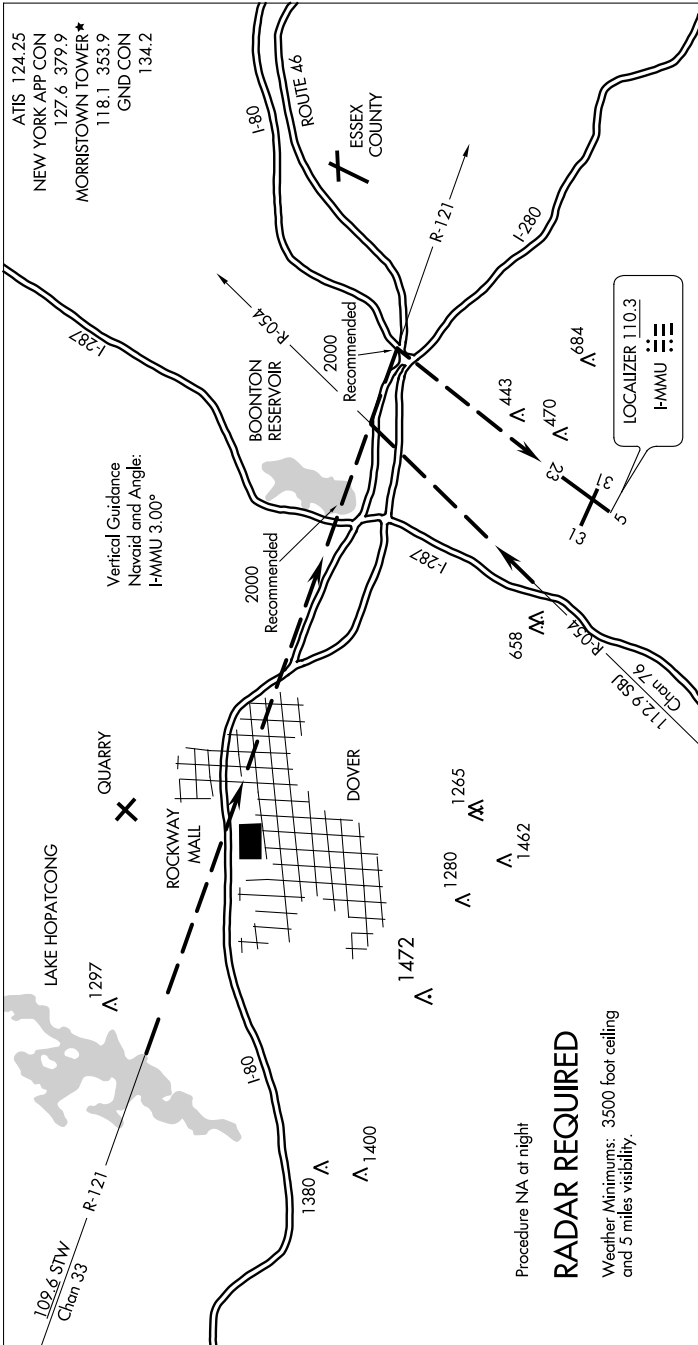


# ROUTE 80 VISUAL RWY 23

AL-931 (FAA)

MORRISTOWN MUNI (MMU)  
MORRISTOWN, NEW JERSEY

NE-2, 03 NOV 2022 to 01 DEC 2022



1 NM	2	3	4	5	6	7	8	9	10	11	12	13	14	15	16	17	18	19	20	21	22	23
------	---	---	---	---	---	---	---	---	----	----	----	----	----	----	----	----	----	----	----	----	----	----

Procedure NA at night

**RADAR REQUIRED**

Weather Minimums: 3500 foot ceiling and 5 miles visibility.

When approaching the airport from the northwest, expect vectors to intercept the STW R-121.  
When you see the highway junction of Rts. 46, 80, and 280, proceed to that point to turn final for Rwy 23.

When approaching the airport from the southwest, expect vectors to intercept the SBJ R-054.  
When you see Rt. 287, follow it until turning base over Rt. 80. Turn final over the junction of Rts. 46, 80 and 280 for Rwy 23.

# ROUTE 80 VISUAL RWY 23

Orig 17JUL97

40°48'N-74°25'W

MORRISTOWN, NEW JERSEY  
MORRISTOWN MUNI (MMU)

NE-2, 03 NOV 2022 to 01 DEC 2022