

VOR/DME PVW 112.9 Chan 76	APP CRS 024°	Rwy Idg 5997 TDZE 3374 Apt Elev 3374
---	------------------------	---

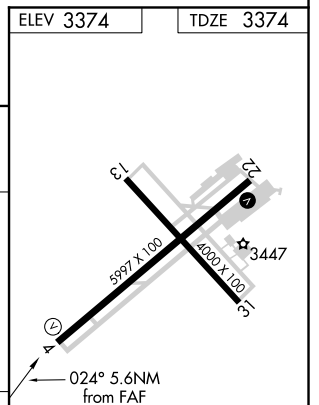
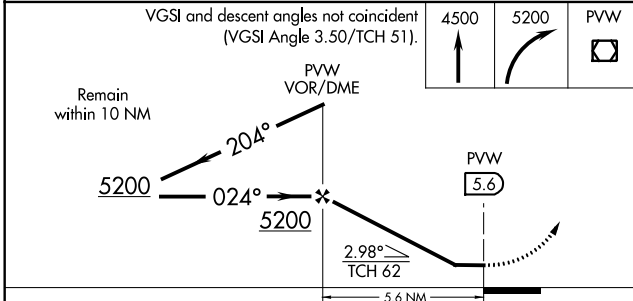
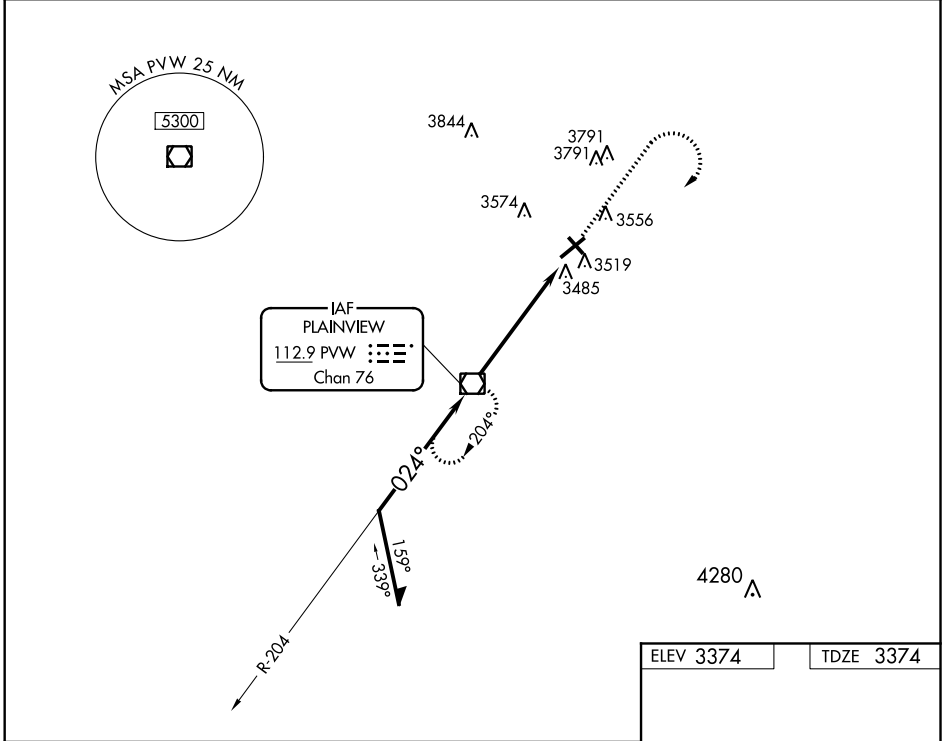
VOR RWY 4

HALE COUNTY (PVW)

⚠️ NA When local altimeter setting not received, use Lubbock altimeter setting and increase all MDA 100 feet, increase S-4 visibility Cat C/D to 1½ SM, Circling Cat C visibility to 2¾ SM, and Circling Cat D visibility to 3 SM. Helicopter visibility reduction below ¾ mile NA.

MISSED APPROACH: Climb to 4500, then climbing right turn to 5200 direct PVW VOR/DME and hold.

AWOS-3 119.675	LUBBOCK APP CON 119.2 351.8	CLNC DEL 121.7	UNICOM 123.0 (CTAF) 0
--------------------------	---------------------------------------	--------------------------	---------------------------------



CATEGORY	A	B	C	D
S-4	3840-1 466 (500-1)		3840-1¾ 466 (500-1¾)	
CIRCLING	3940-1 566 (600-1)		4160-2¼ 786 (800-2¼)	4160-2½ 786 (800-2½)

REIL Rwy 4 and 22 MRL Rwy 4-22 and 13-31 0
FAF to MAP 5.6 NM
Knots: 60 90 120 150 180
Min:Sec: 5:36 3:44 2:48 2:14 1:52