

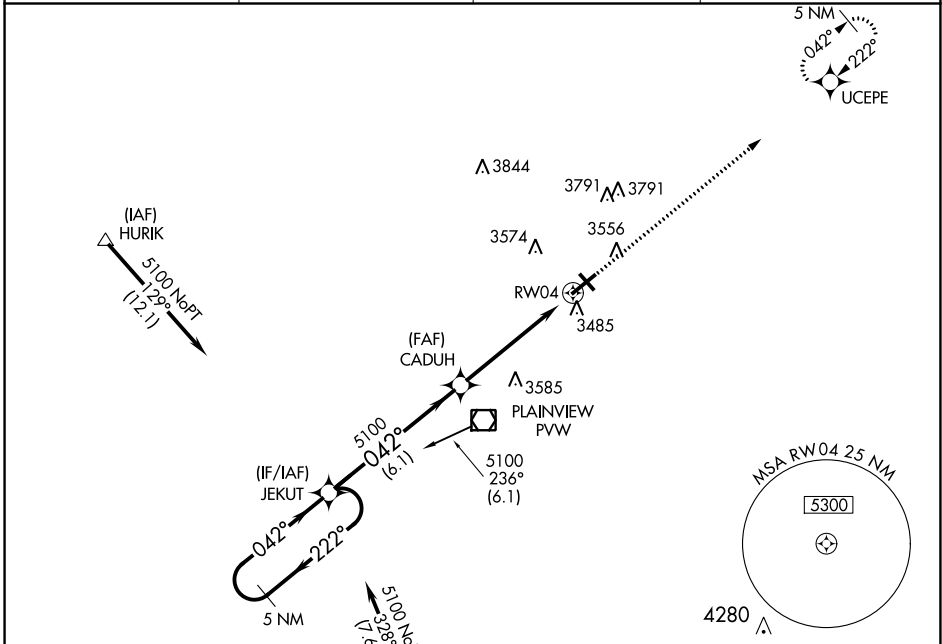
WAAS CH <b>53302</b> <b>W04A</b>	APP CRS <b>042°</b>	Rwy Idg <b>5997</b> TDZE <b>3374</b> Apt Elev <b>3374</b>
--	------------------------	---

# RNAV (GPS) RWY 4

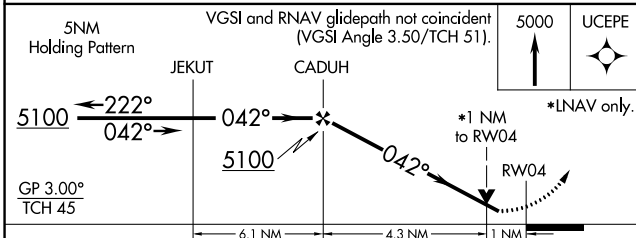
HALE COUNTY (PVW)

RNP APCH.	<p>▼ For uncompensated Baro-VNAV systems, LNAV/VNAV NA below -21°C or above 42°C. VDP and Baro-VNAV NA when using Lubbock altimeter setting. Rwy 4 helicopter visibility reduction below 3/4 SM NA. When local altimeter setting not received, use Lubbock altimeter setting; increase all DA 83 feet and increase all LPV and LNAV/VNAV visibility 1/2 SM, increase all MDA 100 feet and LNAV Cat C/D visibility 1/4 SM and Circling Cat C/D visibility 1/2 SM.</p>	MISSED APPROACH: Climb to 5000, direct UCEPE and hold.
-----------	--	---

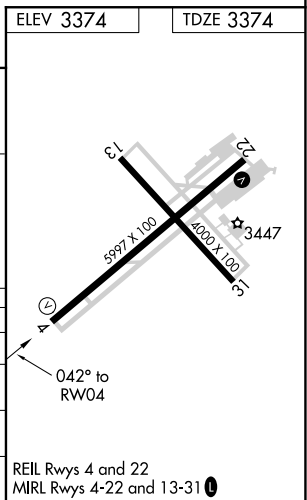
AWOS-3 <b>119.675</b>	LUBBOCK APP CON <b>119.2 351.8</b>	CLNC DEL <b>121.7</b>	UNICOM <b>123.0 (CTAF) 0</b>
--------------------------	---------------------------------------	--------------------------	---------------------------------



ELEV 3374	TDZE 3374
-----------	-----------



CATEGORY	A	B	C	D
LPV DA	3624-1		250 (300-1)	
LNAV/VNAV DA	3730-1 1/4		356 (400-1 1/4)	
LNAV MDA	3800-1	426 (500-1)	3800-1 1/4	426 (500-1 1/4)
CIRCLING	3940-1 1/4	566 (600-1 1/4)	4160-2 1/4 786 (800-2 1/4)	4160-2 1/2 786 (800-2 1/2)



SC-2, 03 NOV 2022 to 01 DEC 2022

SC-2, 03 NOV 2022 to 01 DEC 2022