

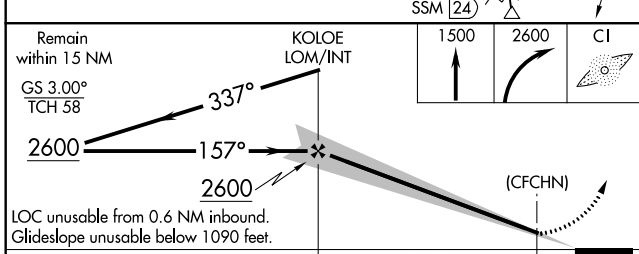
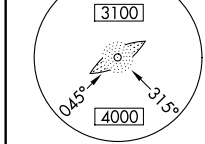
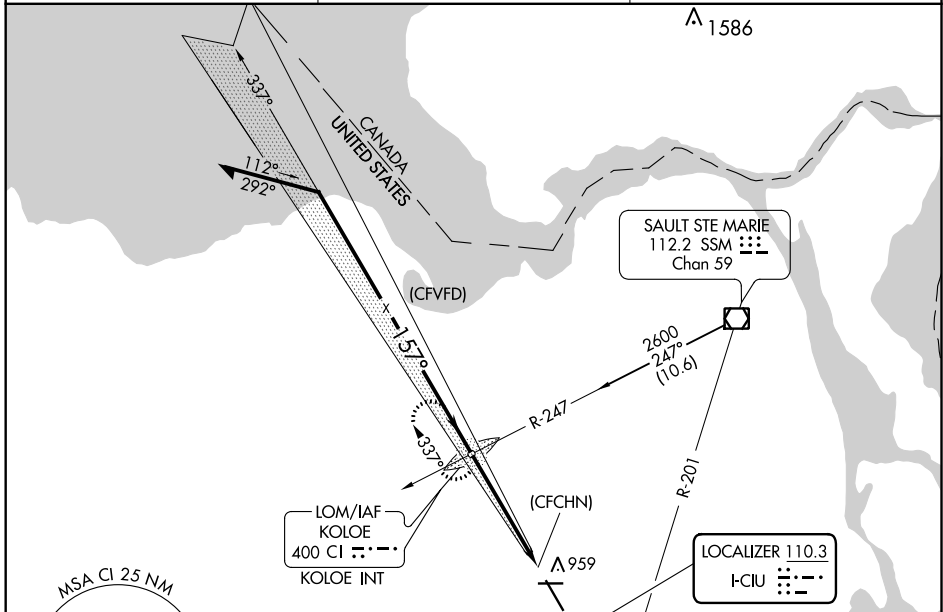
LOC I-CIU 110.3	APP CRS 157°	Rwy Idg 7203
		TDZE 799
		Apt Elev 799

ILS or LOC RWY 16

CHIPPEWA COUNTY INTL (CIU)

ADF required.	MALS R	MISSED APPROACH: Climb to 1500 then climbing right turn to 2600 direct KOLOE LOM/INT and hold. (TACAN aircraft climb to 5000 on heading 160° and SSM VOR/DME R-201 to PINES/SSM 24 DME and hold south, right turn, 021° inbound.)
NA Autopilot coupled approach NA below 1380.	A5	

AWOS-3PT 127.575	TORONTO CENTER 132.65 344.5	UNICOM 123.0 (CTAF)
----------------------------	---------------------------------------	-------------------------------



CATEGORY	A	B	C	D	E
S-ILS 16	1090-½ 291 (300-½)				
S-LOC 16	1160-½	361 (400-½)	1160-5/8	361 (400-5/8)	
CIRCLING	1260-1	461 (500-1)	1260-1½	1360-2	1380-2
			461 (500-1½)	561 (600-2)	581 (600-2)

ELEV 799	TDZE 799				
157° 5.3 NM from FAF					
5001 x 75	28				
856					
897					
34					
7203 x 50					
REIL Rwy 10, 28 and 34					
MRL Rwy 10-28					
HIRL Rwy 16-34					
FAF to MAP 4.7 NM					
Knots	60	90	120	150	180
Min:Sec	4:42	3:08	2:21	1:53	1:34