

MARYSVILLE, CALIFORNIA

RNAV (GPS) RWY 33

APCH CRS	Rwy Idg	12,001
325°	THRE	105
	Arpt Elev	113

AL-771 (USAF)

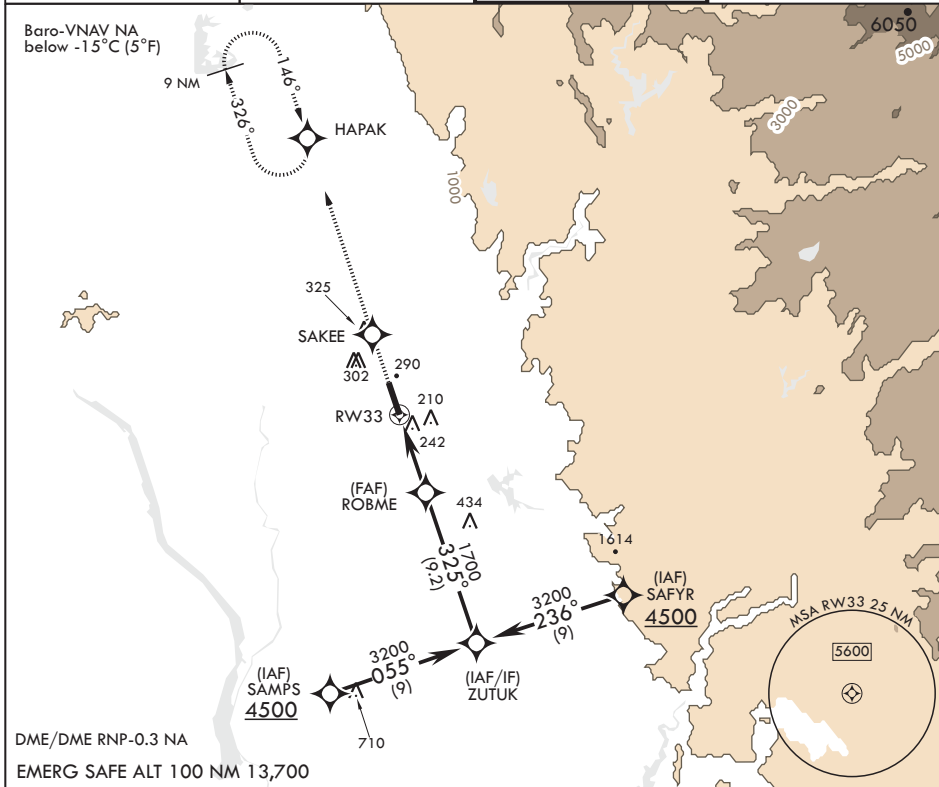
BEALE AFB (KBAB)

* When ALS inop, increase vis to 1 7/8 miles.
 ** When ALS inop, increase CAT AB RVR to 55 and vis to 1 mile, CAT CD vis to 1 1/4 miles.
 *** Circling not authorized E of Rwy 15-33.



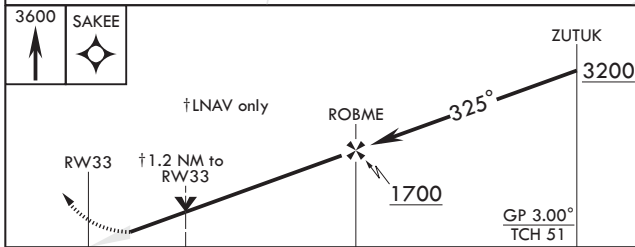
MISSED APPROACH: Climb direct SAKEE, then track 326° to HAPAK and hold, maintain 3600.

ATIS★ 124.55 273.5	NORCAL APP CON 125.4 259.1	TOWER★ 119.4 284.75	GND CON 121.6 257.75
-----------------------	-------------------------------	------------------------	-------------------------



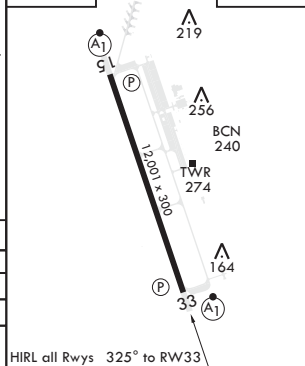
DME/DME RNP-0.3 NA

EMERG SAFE ALT 100 NM 13,700



ELEV 113 THRE 105

CATEGORY	A	B	C	D
RNAV/VNAV DA*	640-1 $\frac{3}{8}$		535	(600-1 $\frac{3}{8}$)
RNAV MDA**	540/24	435 (500- $\frac{1}{2}$)	540/40	435 (500- $\frac{3}{4}$)
CIRCLING***	600-1 487 (500-1)	640-1 527 (600-1)	660-1 $\frac{1}{2}$ 547 (600-1 $\frac{1}{2}$)	680-2 567 (600-2)



HIRL all Rwys 325° to RW33

MARYSVILLE, CALIFORNIA

39°08'N - 121°26'W

BEALE AFB (KBAB)

Amdt 1 24MAY18

RNAV (GPS) RWY 33

SW-2, 03 NOV 2022 to 01 DEC 2022

SW-2, 03 NOV 2022 to 01 DEC 2022