

MARYSVILLE, CALIFORNIA

# RNAV (GPS) RWY 15

APCH CRS	Rwy Idg	12,001
145°	THRE	113
	Arpt Elev	113

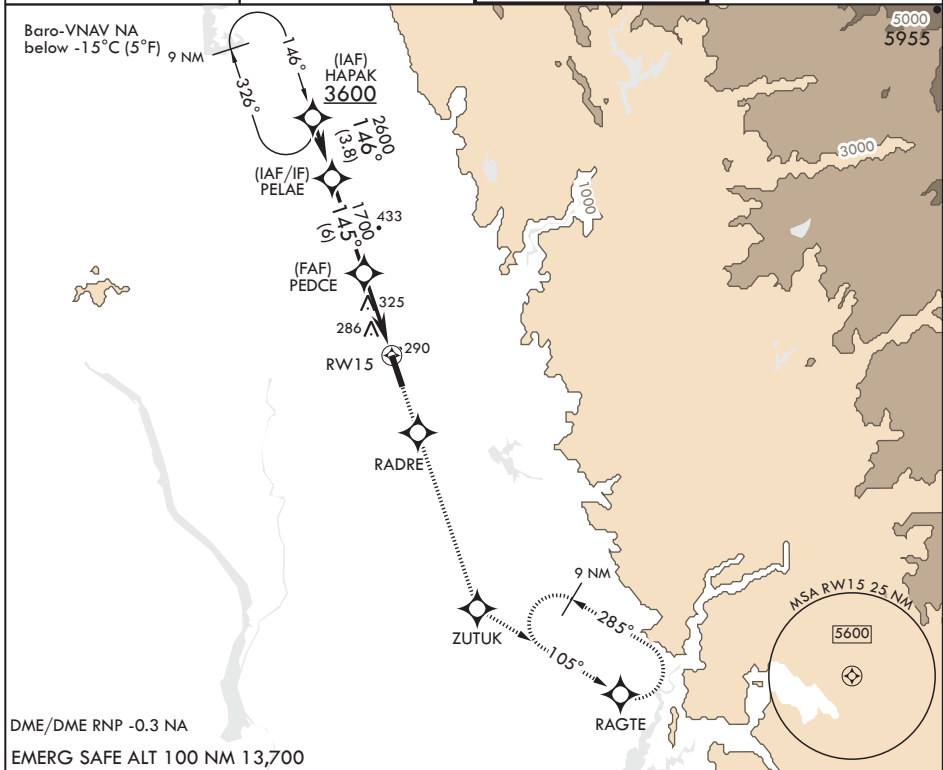
AL-771 (USAF)

BEALE AFB (KBAB)

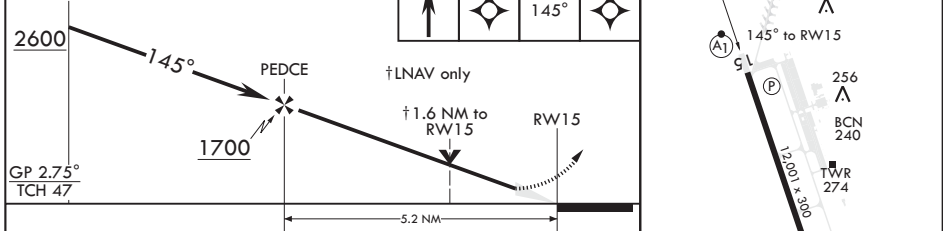
**⚠** \* When ALS inop, increase vis to 2 1/2 miles.  
 \*\* When ALS inop, increase CAT AB RVR to 55 and vis to 1 mile, CAT CDE vis to 1 3/8 miles.  
 \*\*\* Circling not authorized E of Rwy 15-33.

**ALSF-1** MISSED APPROACH: Climb direct RADRE, then track 145° to ZUTUK, then turn left and track 105° to RAGTE and hold, maintain 3600.

ATIS★ 124.55 273.5	NORCAL APP CON 125.4 259.1	TOWER★ 119.4 284.75	GND CON 121.6 257.75
-----------------------	-------------------------------	------------------------	-------------------------



DME/DME RNP -0.3 NA  
 EMERG SAFE ALT 100 NM 13,700



CATEGORY	A	B	C	D	E
LNNAV/VNAV DA*	680-1%		567	(600-1%)	
LNNAV MDA**	620/24 507 (600-1/2)		620/55	507	(600-1)
<b>C</b> CIRCLING***	620-1 507 (600-1)	640-1 527 (600-1)	660-1 1/2 547 (600-1 1/2)	680-2 567 (600-2)	840-2 1/2 727 (800-2 1/2)

HIRL all Rwys

MARYSVILLE, CALIFORNIA  
 Amdt 1 20JUL17

39°08'N - 121°26'W

BEALE AFB (KBAB)

# RNAV (GPS) RWY 15

SW-2, 03 NOV 2022 to 01 DEC 2022

SW-2, 03 NOV 2022 to 01 DEC 2022