

MARYSVILLE, CALIFORNIA

# ILS or LOC Y RWY 15

LOC I-BAB <b>109.5</b>	APCH CRS <b>145°</b>	Rwy Idg <b>12,001</b>	TDZE <b>113</b>	Arpt Elev <b>113</b>
---------------------------	-------------------------	--------------------------	--------------------	-------------------------

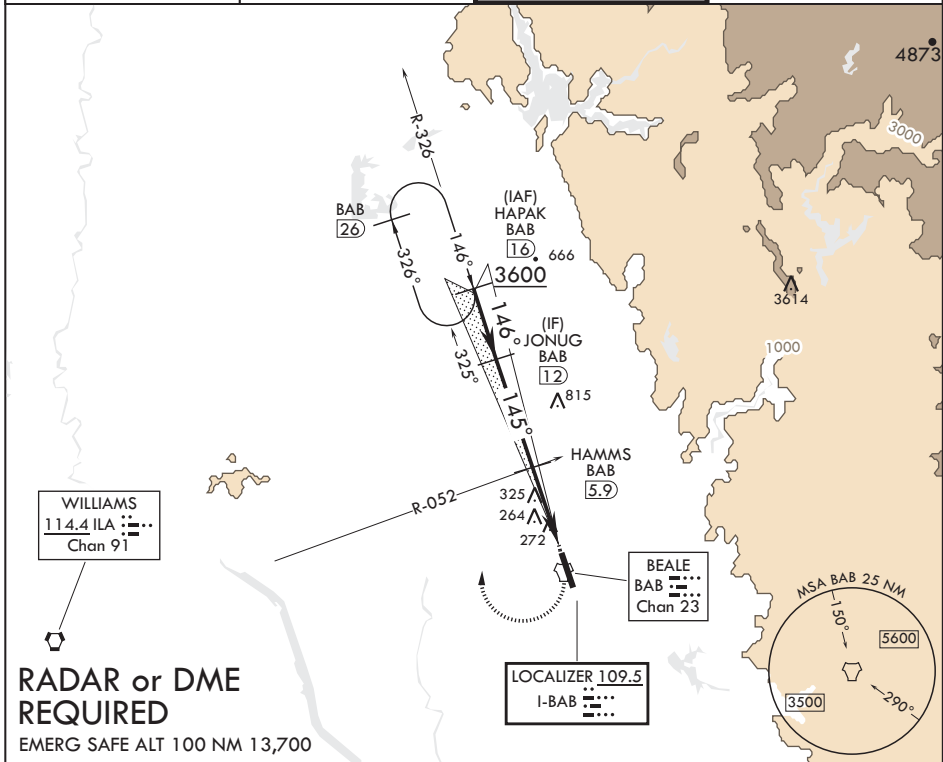
AL-771 (USAF)

BEALE AFB (KBAB)

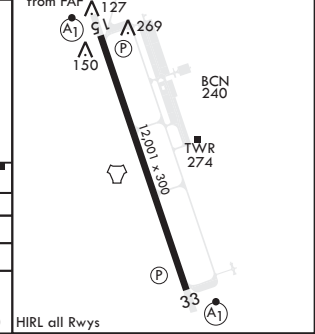
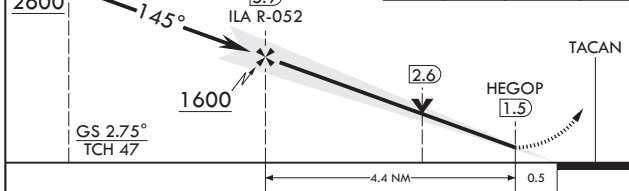
**⚠** \* When ALS inop, increase RVR to 40 and vis to 3/4 mile.  
 \*\* When ALS inop, increase CAT AB RVR to 55 and vis to 1 mile, CAT CDE vis to 1 3/8 miles.  
 \*\*\* Circling not authorized E of Rwy 15-33.

**ALS-1** MISSED APPROACH: Climb to 4400 direct BAB TACAN. Turn right to intercept BAB R-326 to HAPAK and hold, continue climb in hold to 4400.

ATIS* <b>124.55 273.5</b>	NORCAL APP CON <b>125.4 259.1</b>	TOWER* <b>119.4 284.75</b>	GND CON <b>121.6 257.75</b>
------------------------------	--------------------------------------	-------------------------------	--------------------------------



JONUG [12]	VGSI and glideslope not coincident.	4400	BAB	HAPAK BAB [16]	ELEV 113	TDZE 113
---------------	-------------------------------------	------	-----	-------------------	----------	----------



CATEGORY	A	B	C	D	E
S-ILS 15*	313/24		200	(200-1/2)	
S-LOC 15**	620/24	507 (600-1/2)	620/55	507	(600-1)
<b>C</b> CIRCLING***	620-1	507 (600-1)	620-1 1/2 507 (600-1 1/2)	680-2 567 (600-2)	840-2 1/2 (800-2 1/2)

HIRL all Rwys

MARYSVILLE, CALIFORNIA  
Amdt 5 20JUL17

39°08'N - 121°26'W

BEALE AFB (KBAB)

# ILS or LOC Y RWY 15

SW-2, 03 NOV 2022 to 01 DEC 2022

SW-2, 03 NOV 2022 to 01 DEC 2022