

MARYSVILLE, CALIFORNIA

# HI-TACAN Z RWY 15

TACAN BAB Chan 23	APCH CRS 153°	Rwy ldg 12,001	TDZE 113
		Arprt Elev 113	

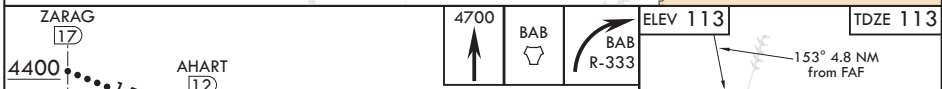
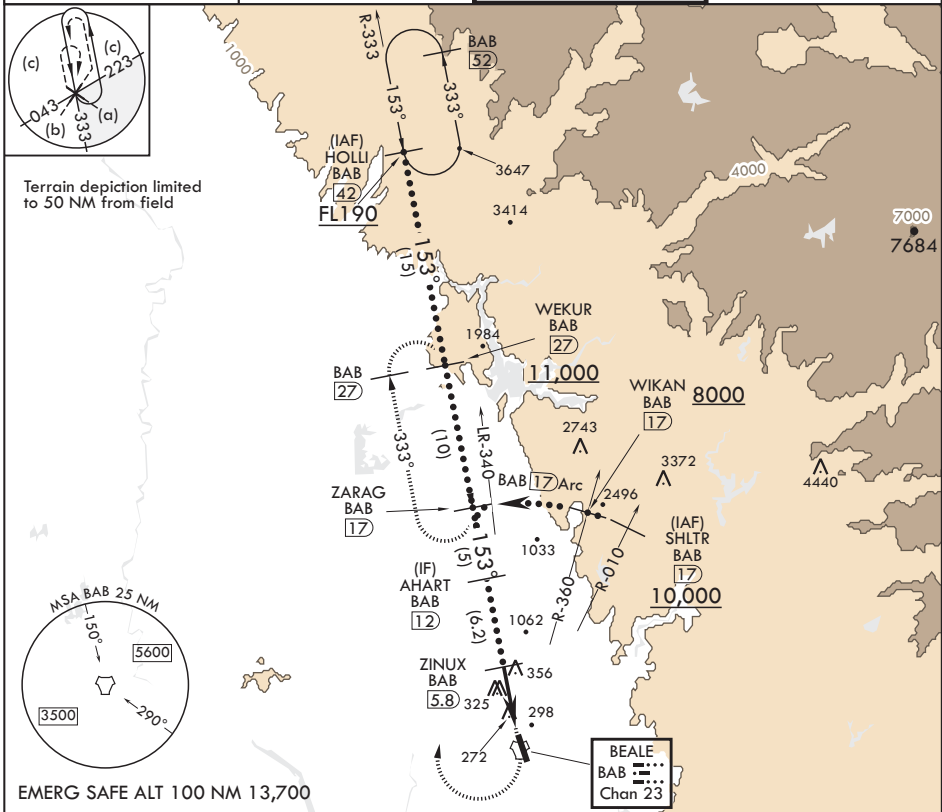
AL-771 (USAF)

BEALE AFB (KBAB)

⚠ \* When ALS inop, increase CAT CDE vis to 1 1/2 miles.  
 \*\* Circling not authorized E of Rwy 15-33.

ALSF-1  
 MISSED APPROACH: Climb to 4700 direct to BAB TACAN. Turn right to intercept BAB R-333 to ZARAG and hold, continue to climb in hold to 4700.

ATIS* 124.55 273.5	NORCAL APP CON 125.4 259.1	TOWER* 119.4 284.75	GND CON 121.6 257.75
-----------------------	-------------------------------	------------------------	-------------------------



CATEGORY	C	D	E
S-15*	640/55	527	(600)-1
CIRCLING**	640-1½ 527 (600-1½)	680-2 567 (600-2)	840-2½ 727 (800-2½)

MARYSVILLE, CALIFORNIA			39°08'N - 121°26'W	BEALE AFB (KBAB)		
Amdt 5 20JUL17			HI-TACAN Z RWY 15			

SW-2, 03 NOV 2022 to 01 DEC 2022

SW-2, 03 NOV 2022 to 01 DEC 2022