

MARYSVILLE, CALIFORNIA

HI-ILS or LOC Z RWY 15

LOC I-BAB 109.5	APCH CRS 145°	Rwy ldg TDZE Arpt Elev	12,001 113 113
---------------------------	-------------------------	------------------------------	---

AL-771 (USAF)

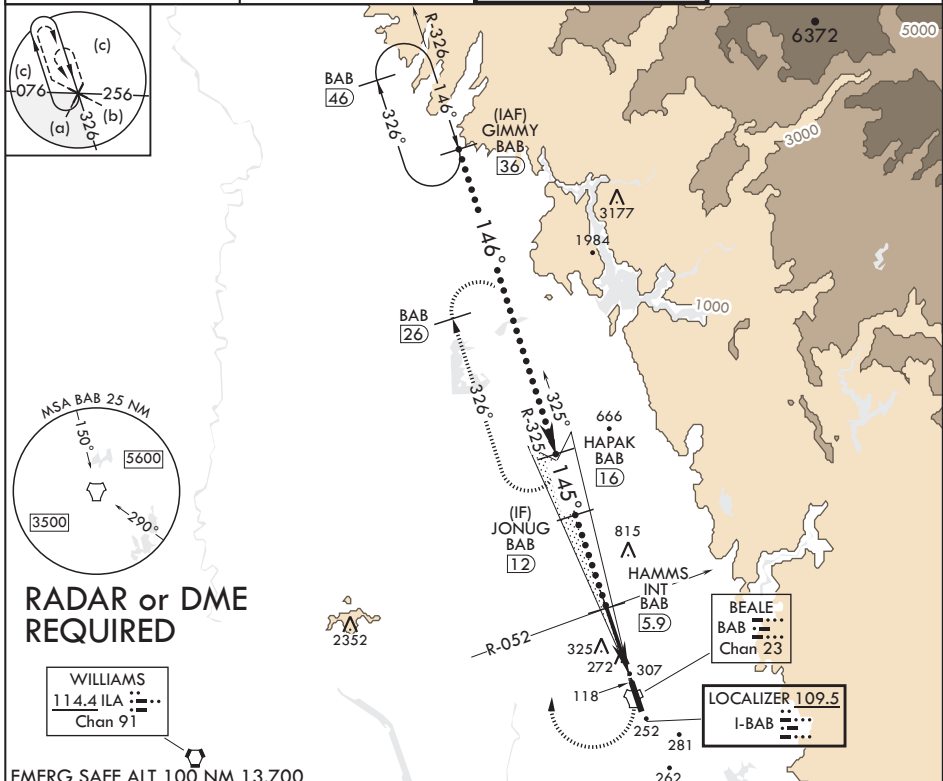
BEALE AFB (KBAB)

* When ALS inop, increase CAT CDE RVR to 40 and vis to 3/4 mile.
 ** When ALS inop, increase CAT CDE vis to 1 3/8 miles.
 *** Circling not authorized E of Rwy 15-33.

ALSF-1
A1

MISSED APPROACH: Climb to 4400 direct to BAB TACAN. Turn right to intercept BAB R-326 to HAPAK and hold, continue climb in hold to 4400.

ATIS* 124.55 273.5	NORCAL APP CON 125.4 259.1	TOWER* 119.4 284.75	GND CON 121.6 257.75
------------------------------	--------------------------------------	-------------------------------	--------------------------------



GIMMY 36 HAPAK 16 JONUG 12 HAMMS INT BAB 5.9 ILA R-052 HEGOP 1.5 BAB TACAN HAPAK 16 HAMMS INT BAB 5.9 HEGOP 1.5 BAB TACAN	VGS1 and glideslope not coincidental. 4400 BAB BAB R-326	ELEV 113 TDZE 113																
12,000 3600 2600 1600 GS 2.75° TCH 47	146° 145° 145° 2.6 0.5 4.4 NM	177 145° 4.9 NM from FAF 12,000 x 3600 BCN 240 TWR 274 33																
CIRCLING***	<table border="1"> <tr> <th>CATEGORY</th> <th>C</th> <th>D</th> <th>E</th> </tr> <tr> <td>S-ILS 15*</td> <td>313/24</td> <td>200</td> <td>(200-1/2)</td> </tr> <tr> <td>S-LOC 15**</td> <td>620/55</td> <td>507</td> <td>(600-1)</td> </tr> <tr> <td>CIRCLING***</td> <td>620-1 1/2 507 (600-1 1/2)</td> <td>680-2 567 (600-2)</td> <td>840-2 1/2 727 (800-2 1/2)</td> </tr> </table>	CATEGORY	C	D	E	S-ILS 15*	313/24	200	(200-1/2)	S-LOC 15**	620/55	507	(600-1)	CIRCLING***	620-1 1/2 507 (600-1 1/2)	680-2 567 (600-2)	840-2 1/2 727 (800-2 1/2)	HIRL all Rwys
CATEGORY	C	D	E															
S-ILS 15*	313/24	200	(200-1/2)															
S-LOC 15**	620/55	507	(600-1)															
CIRCLING***	620-1 1/2 507 (600-1 1/2)	680-2 567 (600-2)	840-2 1/2 727 (800-2 1/2)															

MARYSVILLE, CALIFORNIA

39°08'N - 121°26'W

BEALE AFB (KBAB)

Amdt 5 20JUL17

HI-ILS or LOC Z RWY 15

SW-2, 03 NOV 2022 to 01 DEC 2022

SW-2, 03 NOV 2022 to 01 DEC 2022