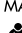



WAAS CH 69219 W04A	APP CRS 041°	Rwy Idg TDZE Apt Elev	5001 270 288
--	------------------------	-----------------------------	---

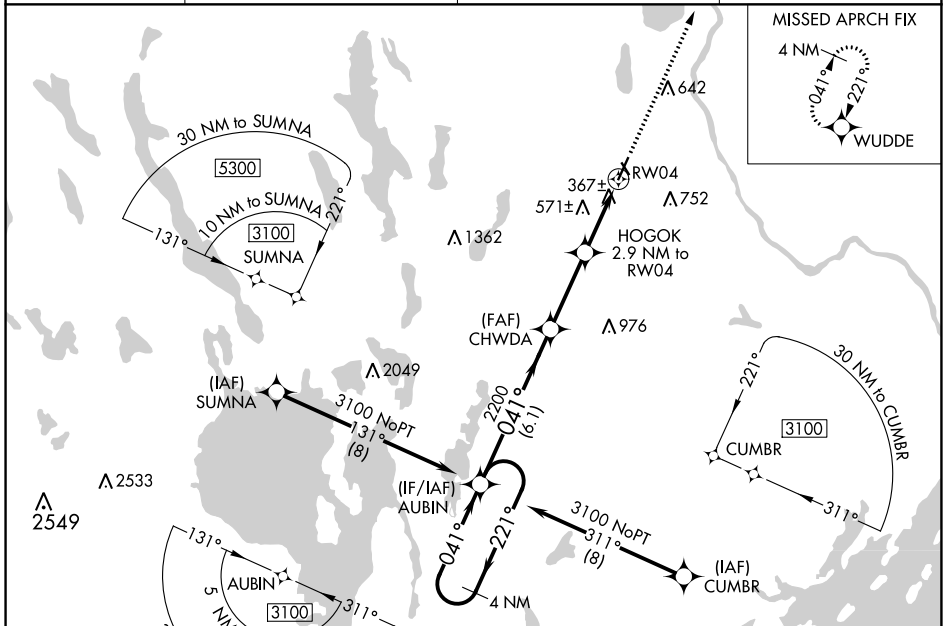
RNAV (GPS) RWY 4

AUBURN/LEWISTON MUNI (LEW)

⚠ Circling to Rwy 17, 22, 35 NA at night. For uncompensated Baro-VNAV systems, LNAV/VNAV NA below -16°C (4°F) or above 54°C (130°F). DME/DME RNP-0.3 NA. For inop ALS, increase visibility LNAV/VNAV all Cats to 1½ SM, LNAV Cat A/B to 1 SM and Cat C/D to 1½ SM. Rwy 04 helicopter visibility reduction below ¾ SM NA.


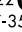

MALS  **MISSED APPROACH:**
Climb to 3100 direct
WUDD and hold.

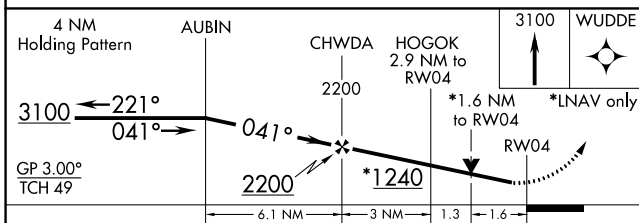
AWOS-3PT 118.025	PORTLAND APP CON ★ 125.5 353.9	CLNC DEL 124.05	UNICOM 122.8 (CTAF) 
----------------------------	--	---------------------------	---



NE-1, 03 NOV 2022 to 01 DEC 2022

NE-1, 03 NOV 2022 to 01 DEC 2022

ELEV 288	TDZE 270
REIL Rwy 22 	
HIRL Rwy 4-22 	
MIRL Rwy 17-35 	



CATEGORY	A	B	C	D
LPV DA		470-½	200 (200-½)	
LNAV/VNAV DA		780-1	510 (500-1)	
LNAV MDA	840-¾	570 (600-¾)	840-1¼	570 (600-1¼)
C CIRCLING	840-1 552 (600-1)	920-1 632 (700-1)	1060-2¼ 772 (800-2¼)	1120-2¾ 832 (900-2¾)

