

APP CRS <b>306°</b>	Rwy Idg <b>7959</b>
	TDZE <b>591</b>
	Apt Elev <b>597</b>

# RNAV (RNP) Z RWY 30

GARY/CHICAGO INTL (GYY)

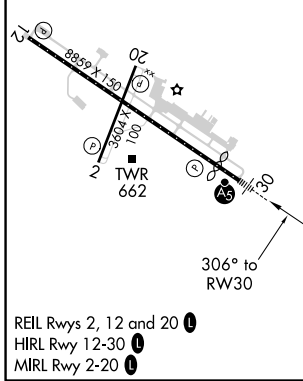
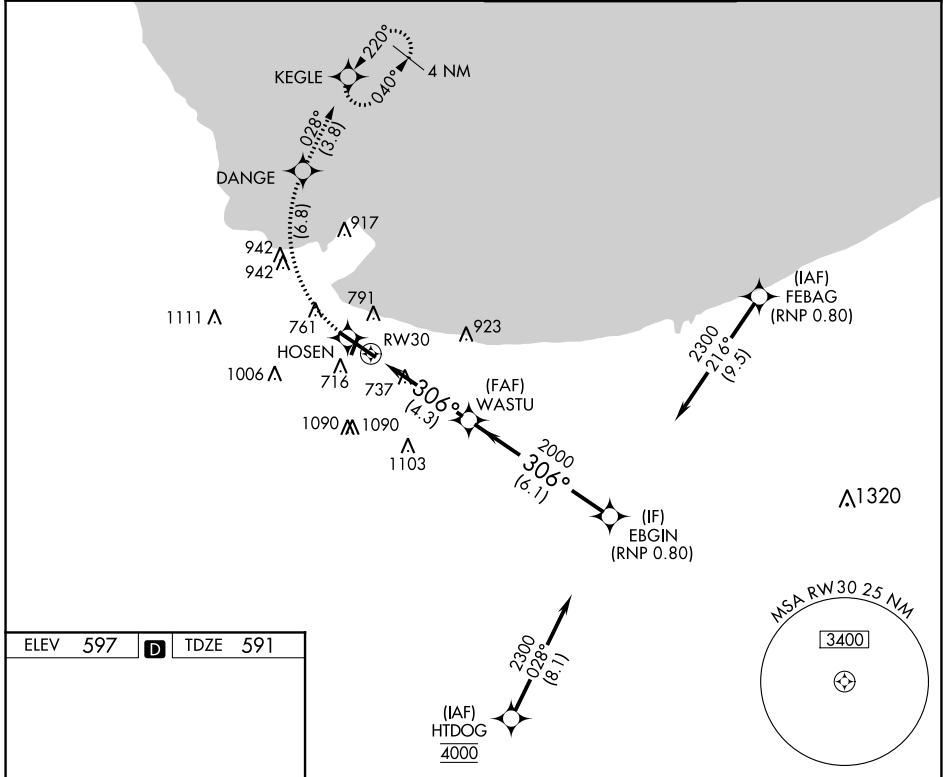
RNP AR APCH - GPS.

▼ For uncompensated Baro-VNAV systems, procedure NA below -16°C or above 54°C. Missed approach requires RNP less than 1.0. For inop ALS, increase RNP 0.30 all Cats visibility to 1½ SM.



MISSED APPROACH: Climb to 2100 on track 306° to HOSEN, right turn to DANGE, then track 028° to KEGLE and hold.

ATIS <b>134.575</b>	CHICAGO APP CON <b>133.1 285.6</b>	GARY TOWER ★ <b>125.6 (CTAF) 0</b>	GND CON <b>121.9</b>
------------------------	---------------------------------------	---------------------------------------	-------------------------



ELEV 597	TDZE 591				
2100 tr 306°	HOSEN	DANGE	tr 028°	KEGLE	EBGIN
RWY 30		WASTU		2300	
4.3 NM		6.1 NM		GP 3.00° TCH 57	
CATEGORY	A	B	C	D	
RNP 0.13 DA	976/35		385 (400-½)		
RNP 0.30 DA	1098/55		507 (600-1)		

**AUTHORIZATION REQUIRED**

EC-2, 03 NOV 2022 to 01 DEC 2022

EC-2, 03 NOV 2022 to 01 DEC 2022