

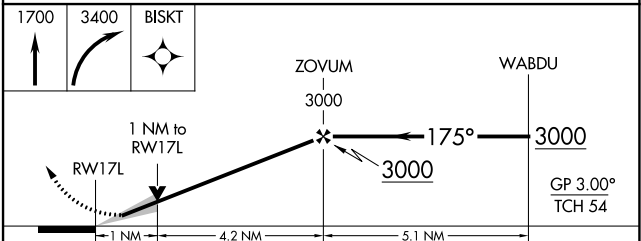
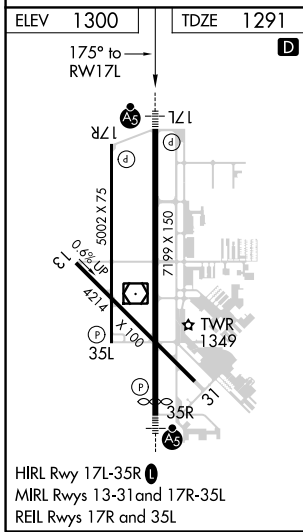
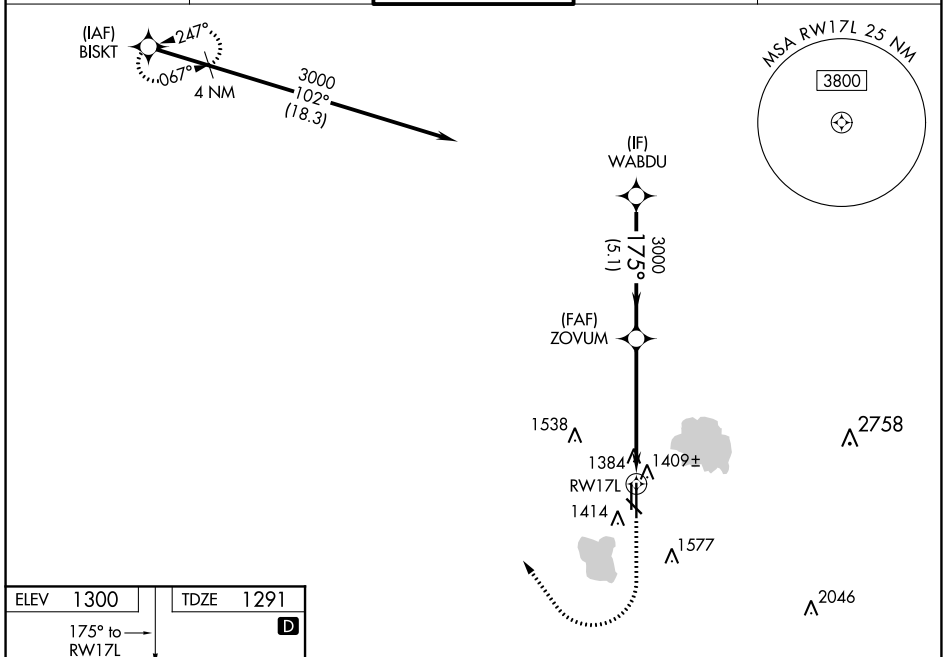
WAAS CH <b>72737</b> <b>W17A</b>	APP CRS <b>175°</b>	Rwy ldg TDZE <b>1291</b> Apt Elev <b>1300</b>
--	------------------------	---

# RNAV (GPS) RWY 17L

WILEY POST (PWA)

RNP APCH-GPS.		MALSR	MISSED APPROACH: Climb to 1700 then climbing right turn to 3400 direct BISKT and hold.
<p><b>▼</b> For uncompensated Baro-VNAV systems, LNAV/VNAV NA below -13°C or above 54°C. For inop ALS, increase LNAV/VNAV all Cats visibility to 7/8 SM and LNAV Cat C/D visibility to 1 SM.</p> <p><b>▲</b> ASR</p>			

ATIS <b>128.725</b>	OKE CITY APP CON <b>124.6 266.8</b>	<b>WILEY POST TOWER ★</b> <b>126.9 (CTAF) 306.9</b>	GND CON <b>121.7</b>	UNICOM <b>122.95</b>
------------------------	--	--	-------------------------	-------------------------



CATEGORY	A	B	C	D
LPV DA		1491-1/2	200 (200-1/2)	
LNAV/VNAV DA		1590-1/2	299 (300-1/2)	
LNAV MDA	1660-1/2	369 (400-1/2)	1660-5/8	369 (400-5/8)
<b>C</b> CIRCLING	1780-1	480 (500-1)	1880-1 1/2 580 (600-1 1/2)	1880-2 580 (600-2)

SC-1, 03 NOV 2022 to 01 DEC 2022

SC-1, 03 NOV 2022 to 01 DEC 2022