

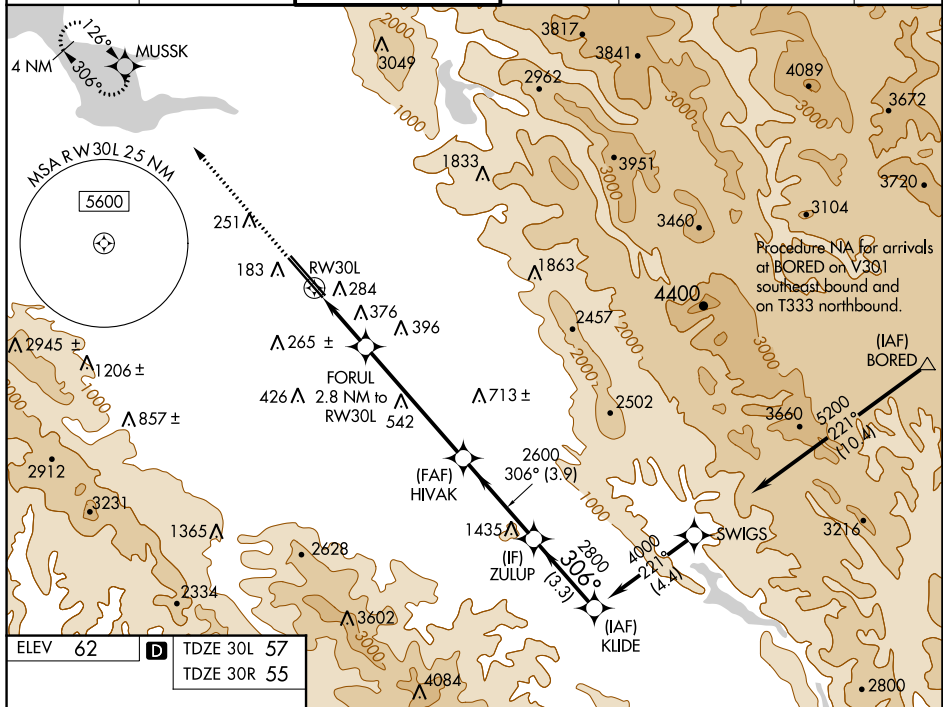
WAAS CH <b>97306</b> <b>W30A</b>	APP CRS <b>306°</b>	Rwy Idg 30L <b>7614</b> 30R <b>7597</b>	TDZE 57 55	Apt Elev 62 62
--	------------------------	---	------------------	----------------------

# RNAV (GPS) Y RWY 30L

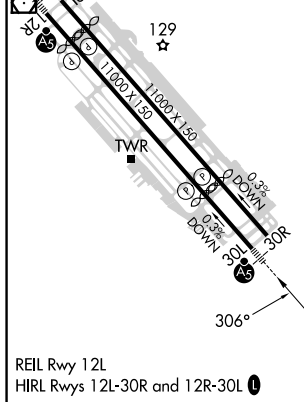
NORMAN Y MINETA SAN JOSE INTL (SJC)

RNP APCH-GPS. ▼ For uncompensated Baro-VNAV systems, LNAV/VNAV NA below 1°C or above 54°C. For inop ALS, increase LNAV/VNAV all Cats visibility to 1½ SM. * RVR 1800 authorized with use of FD or AP or HUD to DA.	MALSR Rwy 30L 	MISSED APPROACH: Climb to 2300 direct MUSSK and hold.
---	-------------------	---

D-ATIS <b>126.95</b>	NORCAL APP CON <b>120.1 290.25</b>	SAN JOSE TOWER * <b>124.0 (CTAF) 0 257.6</b>	GND CON <b>121.7</b>	CLNC DEL <b>118.0</b>	CPDLC	UNICOM <b>122.95</b>
-------------------------	---------------------------------------	---	-------------------------	--------------------------	-------	-------------------------



ELEV 62	<b>D</b>	TDZE 30L 57
		TDZE 30R 55



2300	MUSSK	VGSI and RNAV glidepath not coincident (VGSI Angle 3.00/TCH 70).	KLIDE
		FORUL 2.8 NM to RWY 30L	
		HIVAK 2600	
		ZULUP 2800	
		KLIDE 4000	
		GP 3.00° TCH 54	
		1.6 NM	1.2 NM
		5.3 NM	3.9 NM
		3.3 NM	

CATEGORY	A	B	C	D
LPV DA*	257/24 200 (200-½)			
LNAV/VNAV DA	540/50 483 (500-1)			
LNAV MDA	640/24	583 (600-½)	640-1¼	583 (600-1¼)
SIDESTEP 30R	640-1 585 (600-1)			

SW-2, 03 NOV 2022 to 01 DEC 2022

SW-2, 03 NOV 2022 to 01 DEC 2022