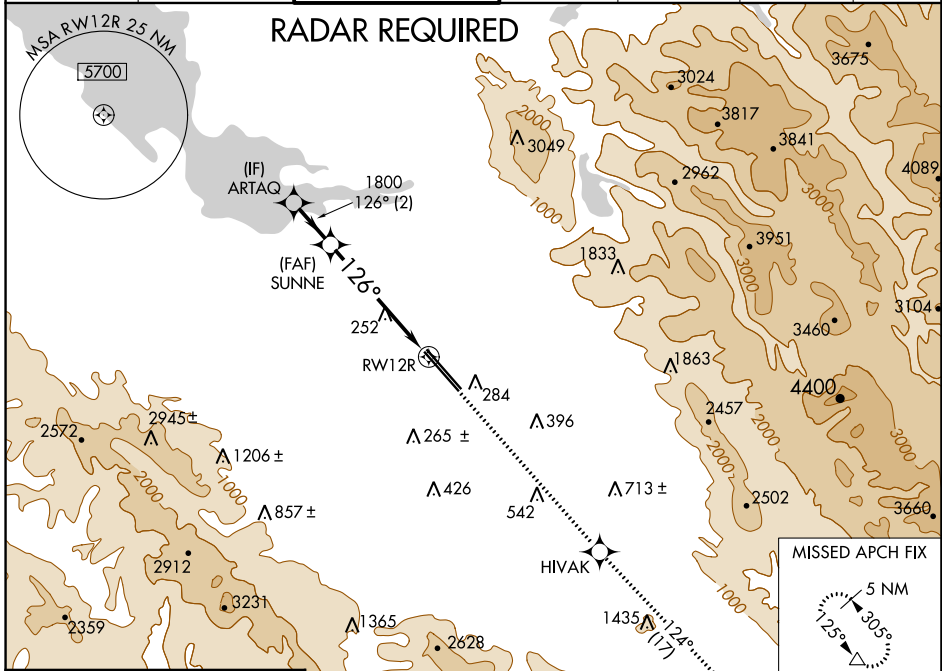


WAAS CH 90106 W12A	APP CRS 126°	Rwy Idg TDZE Apt Elev	12R 8587 46 62	12L 8831 44 62
--	------------------------	-----------------------------	--	--

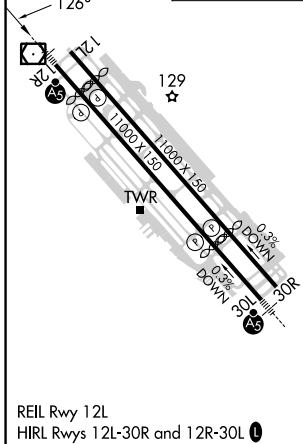
RNAV (GPS) Y RWY 12R

NORMAN Y MINETA SAN JOSE INTL (SJC)

For uncompensated Baro-VNAV systems, LNAV/VNAV NA below -1°C (31°F) or above 54°C (130°F). DME/DME RNP-0.3 NA. For inoperative MALSR, increase LNAV/VNAV all Cats visibility to 1 mile and LNAV Cats C/D visibility to 1 1/2 mile.	SAN JOSE TOWER ★ 124.0 (CTAF) 257.6		GND CON 121.7	CLNC DEL 118.0	CPDLC	UNICOM 122.95
	D-ATIS 126.95	NORCAL APP CON 120.1 290.25	MALSRL Rwy 12R 	MISSED APPROACH: Climb to 4600 direct HIWAK and on track 124° to GILRO and hold.		



ELEV 62	D	TDZE 12R 46	TDZE 12L 44
---------	----------	-------------	-------------



VGSI and RNAV glidepath not coincident (VGSI Angle 3.00/TCH 75).

ARTAQ	SUNNE	4600	HIWAK	tr 124°	GILRO
1800	1800				
GP 3.00° TCH 58		*LNAV only			
2 NM		4.1 NM		1.3 NM	
*1.3 NM to RWY 12R RWY 12R					
CATEGORY LPV DA LNAV/VNAV DA LNAV MDA SIDESTEP 12L	A 246-1/2 371-5/8 325 (400-3/8) 520-1/2 476 (500-1)	B 200 (200-1/2) 371-1 325 (400-1) 474 (500-1/2) 476 (500-1)	C 520-1 474 (500-1) 520-1 1/2 476 (500-1 1/2)	D 520-2 476 (500-2)	

SW-2, 03 NOV 2022 to 01 DEC 2022

SW-2, 03 NOV 2022 to 01 DEC 2022