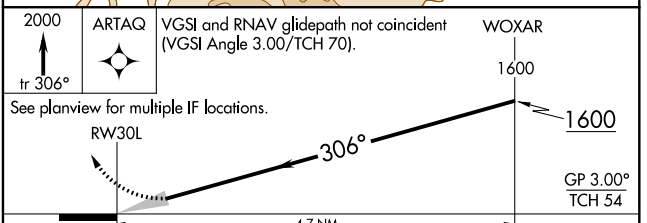
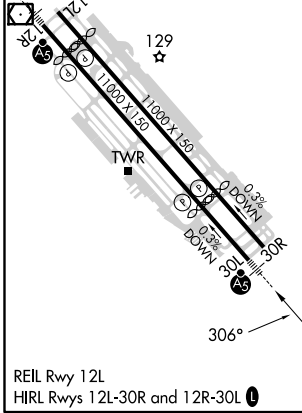
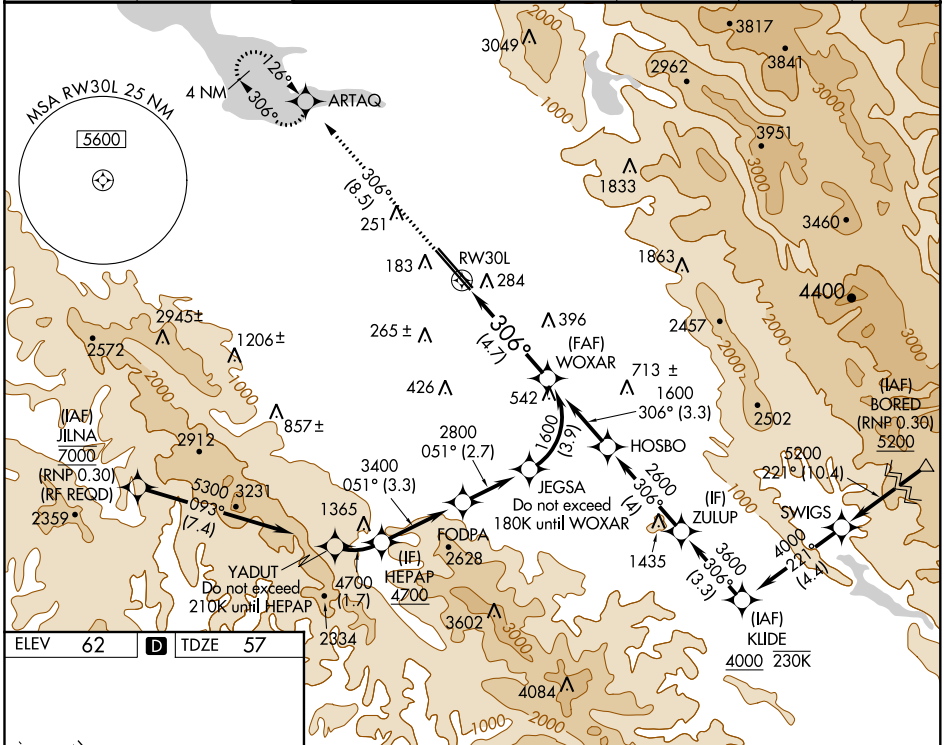


APP CRS	Rwy Idg	7614
306°	TDZE	57
	Apt Elev	62

RNAV (RNP) Z RWY 30L

NORMAN Y MINETA SAN JOSE INTL (SJC)

RNP AR APCH.			MALSR		MISSED APPROACH: Climb to 2000 on track 306° to ARTAQ and hold.	
<p>▼ For uncompensated Baro-VNAV systems, procedure NA below 1°C or above 54°C. For inop ALS, increase RNP 0.10 all Cats visibility to RVR 5500 and increase RNP 0.30 all Cats visibility to 1½ SM.</p>						
D-ATIS	NORCAL APP CON	SAN JOSE TOWER ★	GND CON	CLNC DEL	CPDLC	UNICOM
126.95	120.1 290.25	124.0 (CTAF) 257.6	121.7	118.0		122.95



CATEGORY	A	B	C	D
RNP 0.10 DA		430/35	373 (400-¾)	
RNP 0.20 DA		464/40	407 (500-¾)	
RNP 0.30 DA		541/50	484 (500-1)	

AUTHORIZATION REQUIRED

SW-2, 03 NOV 2022 to 01 DEC 2022

SW-2, 03 NOV 2022 to 01 DEC 2022