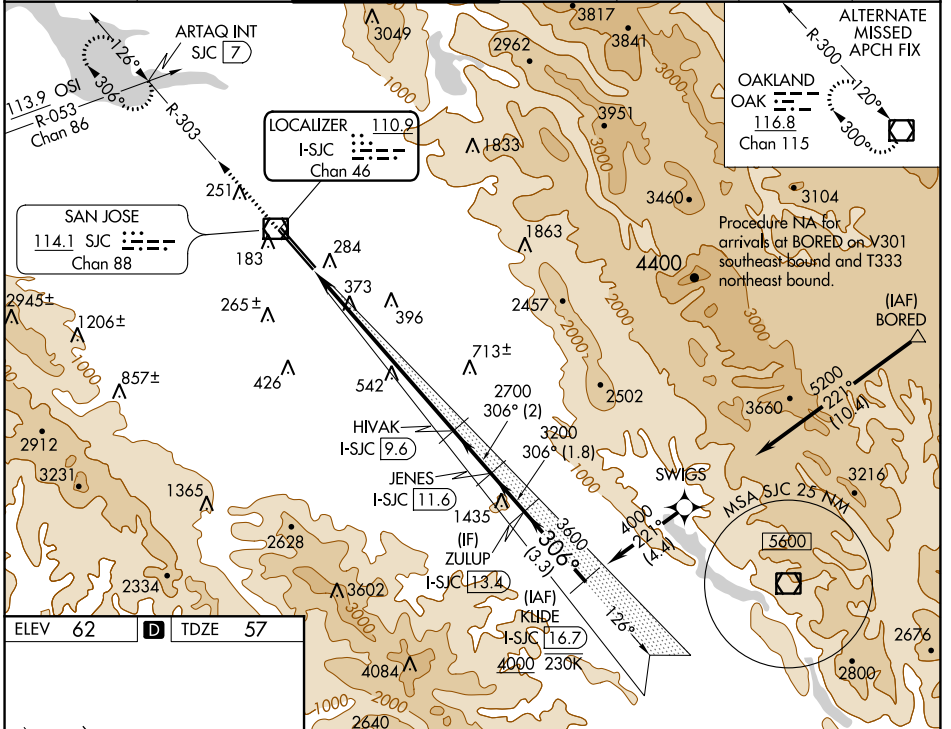


| | | |
|--|------------------------|---|
| LOC/DME I-SJC 110.9 Chan 46 | APP CRS 306° | Rwy Idg 7614 TDZE 57 Apt Elev 62 |
|--|------------------------|---|

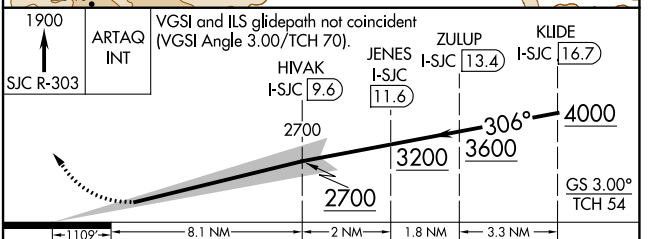
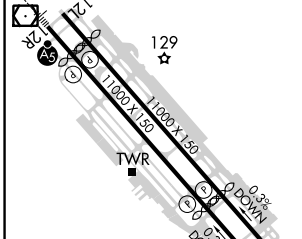
ILS RWY 30L (SA CAT I & II)

NORMAN Y MINETA SAN JOSE INTL (SJC)

| | | | | | | |
|---|---------------------------------------|---|-------------------------|--------------------------|--|-------------------------|
| RNAV 1-GPS or RADAR required for procedure entry. DME required. From BORED: RNAV 1-GPS required. | | | | MALSR | MISSED APPROACH: Climb to 1900 on SJC VOR/DME R-303 to ARTAQ INT/SJC 7 DME and hold. | |
| SA CAT I: Requires specific OPSPEC, MSPEC, or LOA approval and use of HUD to DH. SA CAT II: Reduced lighting: requires specific OPSPEC, MSPEC, or LOA approval and use of autoland or HUD to touchdown. SA CAT I/II: Procedure NA when tower closed. | | | | | | |
| D-ATIS 126.95 | NORCAL APP CON 120.1 290.25 | SAN JOSE TOWER* 124.0 (CTAF) 257.6 | GND CON 121.7 | CLNC DEL 118.0 | CPDLC | UNICOM 122.95 |



| | | |
|---------|----------|---------|
| ELEV 62 | D | TDZE 57 |
|---------|----------|---------|



| | | | | |
|-----------|-------------------------------|---|---|---|
| CATEGORY | A | B | C | D |
| S-ILS 30L | SA CAT I RA 147/14 150 DA 207 | | | |
| S-ILS 30L | SA CAT II RA 97/12 100 DA 157 | | | |

SA CATEGORY I & II ILS - SPECIAL AIRCREW AND AIRCRAFT CERTIFICATION REQUIRED

REIL Rwy 12L
 HIRL Rws 12L-30R and 12R-30L

SAN JOSE, CALIFORNIA
 Amdt 26 10SEP20

NORMAN Y MINETA SAN JOSE INTL (SJC)
ILS RWY 30L (SA CAT I & II)

SW-2, 03 NOV 2022 to 01 DEC 2022

SW-2, 03 NOV 2022 to 01 DEC 2022