

WAAS CH 82010 W05A	APP CRS 053°	Rwy Idg TDZE Apt Elev	8002 666 668
--	------------------------	-----------------------------	---

RNAV (GPS) RWY 5

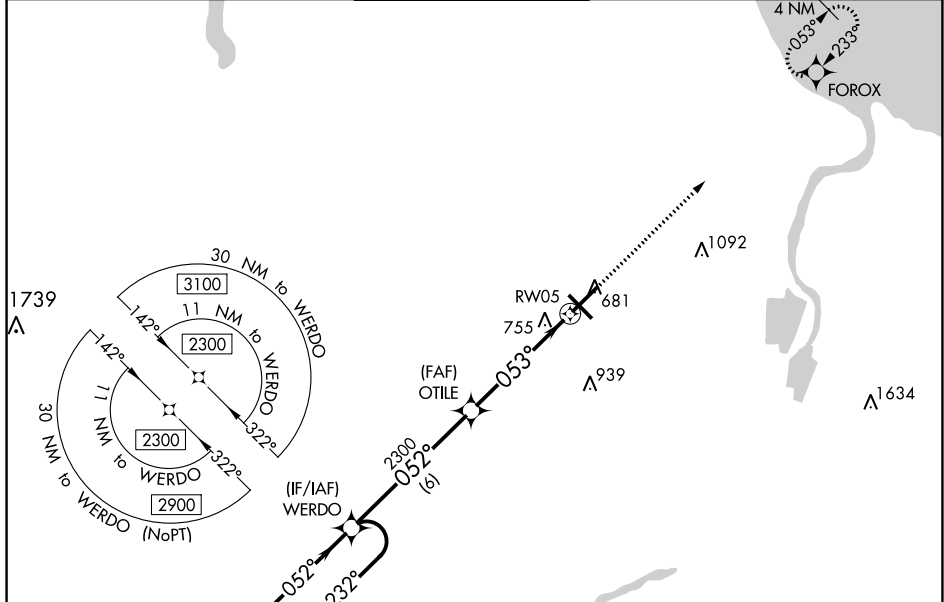
MBS INTL (MBS)

▼ For uncompensated Baro-VNAV systems, LNAV/VNAV NA below -18°C (0°F) or above 54°C (130°F). DME/DME RNP-0.3 NA. For inoperative ALS, increase LNAV/VNAV all Cats visibility to RVR 4500 and LNAV Cats C/D visibility to RVR 6000.
** RVR 1800 authorized with use of FD or AP or HUD to DA.

MALSRL

MISSED APPROACH:
Climb to 2300 direct FOROX and hold.

ATIS 125.925	GREAT LAKES APP CON* 126.45 235.625	SAGINAW TOWER * 120.1(CTAF) 257.7	GND CON 121.7	CLNC DEL 121.85	UNICOM 122.95
------------------------	---	---	-------------------------	---------------------------	-------------------------



EC-1, 03 NOV 2022 to 01 DEC 2022

EC-1, 03 NOV 2022 to 01 DEC 2022

