

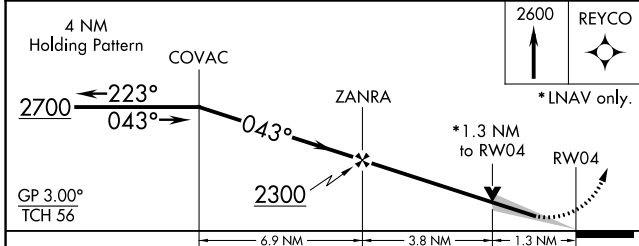
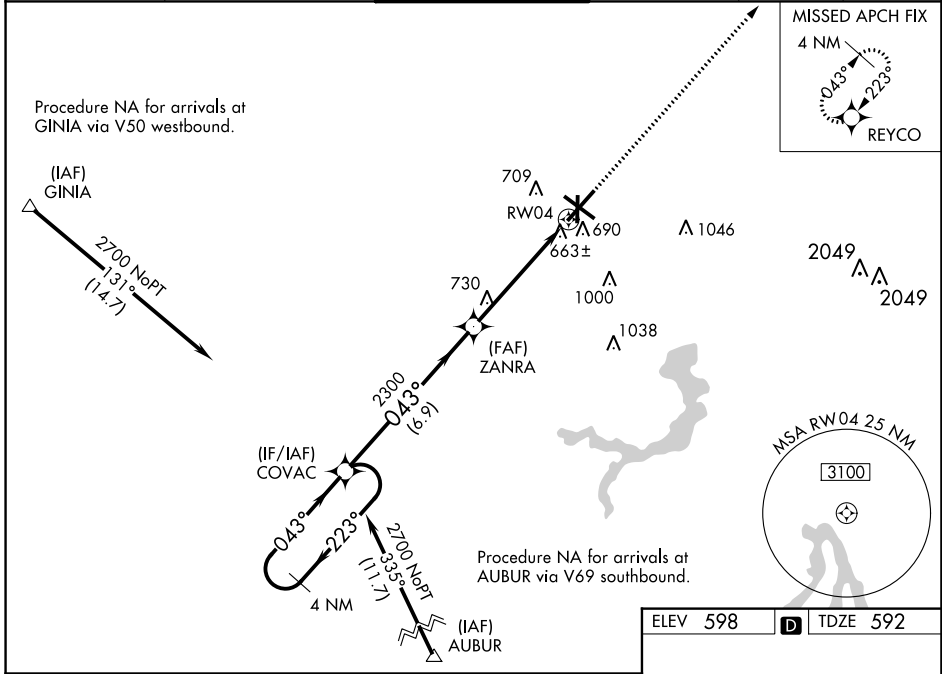
WAAS CH 70309 W04A	APP CRS 043°	Rwy Idg TDZE Apt Elev	7927 592 598
--	------------------------	-----------------------------	---

RNAV (GPS) RWY 4

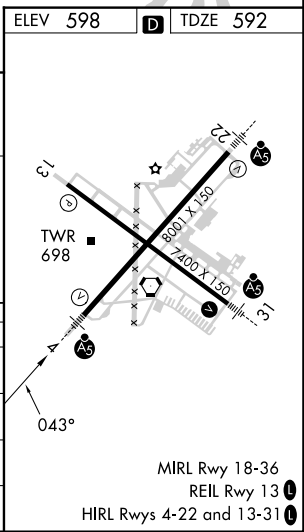
ABRAHAM LINCOLN CAPITAL (SPI)

<p>⚠ DME/DME RNP-0.3 NA. For uncompensated Baro-VNAV systems LNAV/VNAV NA below -16°C (4°F) and above 47°C (116°F). When local altimeter setting not received, use Lincoln altimeter setting: increase all DA 57 feet and MDA 60 feet, increase Circling Cat C and D visibility ¼ SM. Baro-VNAV and VDP NA when using Lincoln altimeter setting. For inoperative MALSR increase LPV all Cats visibility to RVR 5000.</p>	<p>MALSR</p>	<p>MISSED APPROACH: Climb to 2600 direct REYCO and hold.</p>
---	--------------	--

ATIS 127.65 270.1	SAINT LOUIS APP CON * 126.15 323.0	SPRINGFIELD TOWER * 121.3 (CTAF) 257.8	GND CON 121.9 348.6	CLNC DEL 121.7	UNICOM 122.95
-----------------------------	--	--	-------------------------------	--------------------------	-------------------------



CATEGORY	A	B	C	D
LPV DA		854/24	262 (300-½)	
LNAV/VNAV DA		931/40	339 (400-¾)	
LNAV MDA	1060/24	468 (500-½)	1060/50	468 (500-1)
C CIRCLING	1060-1 462 (500-1)	1100-1 502 (600-1)	1360-2¼ 762 (800-2¼)	1380-2½ 782 (800-2½)



EC-3, 03 NOV 2022 to 01 DEC 2022

EC-3, 03 NOV 2022 to 01 DEC 2022