

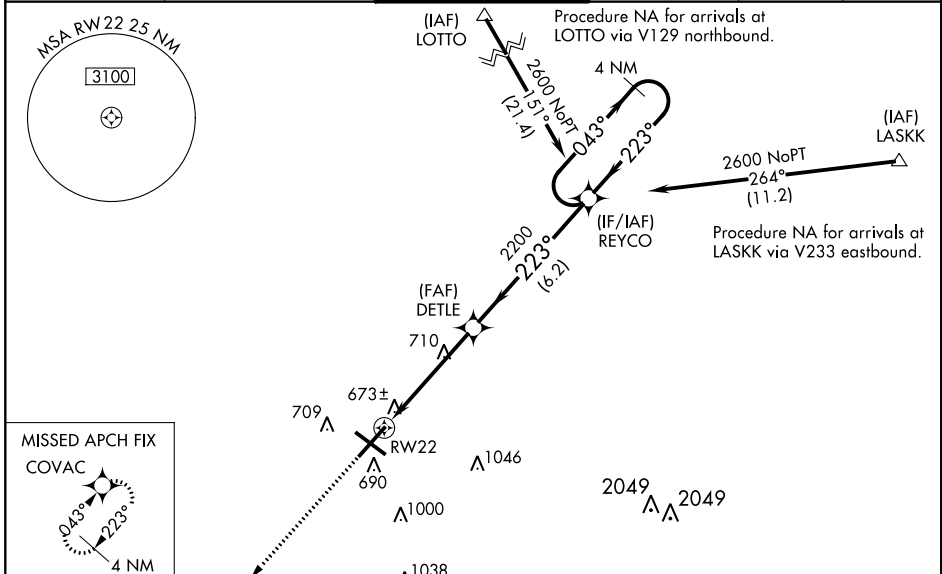
WAAS CH <b>81809</b> <b>W22A</b>	APP CRS <b>223°</b>	Rwy Idg TDZE Apt Elev	<b>8001</b> <b>598</b> <b>598</b>
--	------------------------	-----------------------------	---

# RNAV (GPS) RWY 22

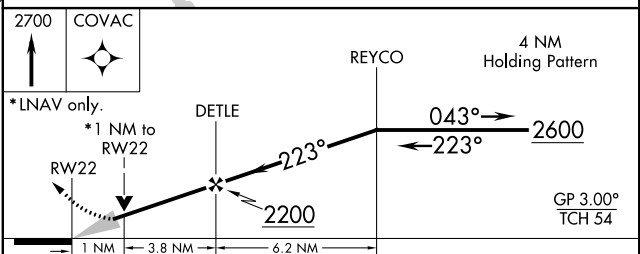
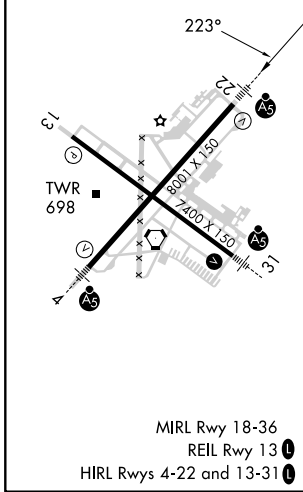
ABRAHAM LINCOLN CAPITAL (SPI)

<p><b>ASR</b></p>	<p>DME/DME RNP-0.3 NA. For uncompensated Baro-VNAV systems LNAV/VNAV NA below -16°C (4°F) and above 47°C (116°F). When local altimeter setting not received, use Lincoln altimeter setting and increase all DA 57 feet, all MDA 60 feet, and increase LNAV/VNAV all Cats, LNAV Cats C/D and Circling Cat C visibility ¼ mile. Baro-VNAV and VDP NA when using Lincoln altimeter setting. For inoperative MALSR, increase LPV all Cats visibility to 1 mile. For inoperative MALSR when using Lincoln altimeter setting increase LPV all Cats visibility to 1 ½, LNAV/VNAV all Cats visibility to 1 ¾, LNAV Cats C/D visibility to 1 ¼.</p>	<p>MALSR</p>	<p>MISSED APPROACH: Climb to 2700 direct COVAC and hold.</p>
	<p>Procedure NA for arrivals at LOTTO via V129 northbound.</p>		

ATIS <b>127.65 270.1</b>	SAINT LOUIS APP CON * <b>126.15 323.0</b>	SPRINGFIELD TOWER * <b>121.3 (CTAF) 0 257.8</b>	GND CON <b>121.9 348.6</b>	CLNC DEL <b>121.7</b>	UNICOM <b>122.95</b>
-----------------------------	--	--	-------------------------------	--------------------------	-------------------------



ELEV 598	<b>D</b>	TDZE 598
----------	----------	----------



CATEGORY	A	B	C	D
LPV DA	884-½		286 (300-½)	
LNAV/VNAV DA	1050-1		452 (500-1)	
LNAV MDA	960-½ 382 (400-½)		960-⅝ 382 (400-⅝)	
<b>C</b> CIRCLING	1040-1¼ 442 (500-1¼)	1100-1¼ 502 (600-1¼)	1360-2¼ 762 (800-2¼)	1380-2½ 782 (800-2½)

EC-3, 03 NOV 2022 to 01 DEC 2022

EC-3, 03 NOV 2022 to 01 DEC 2022