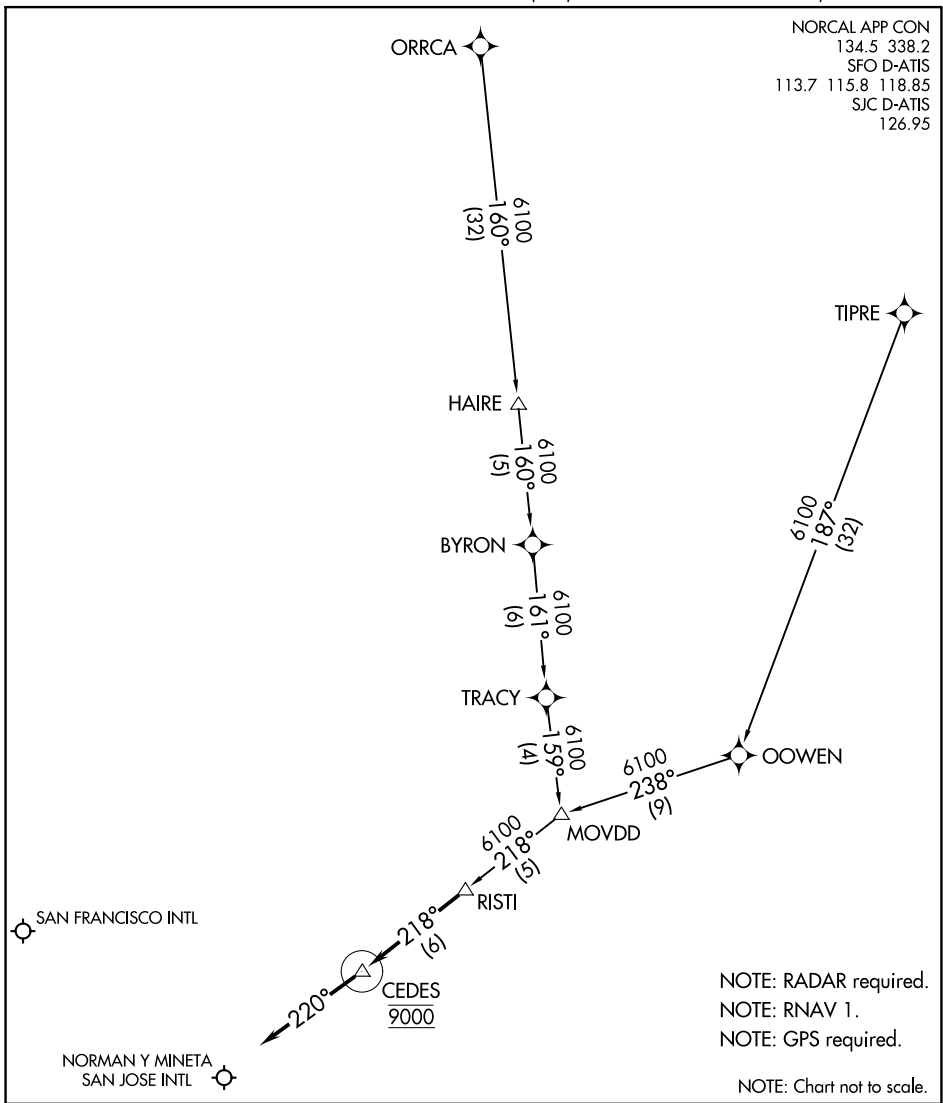


RISTI ONE ARRIVAL (RNAV)

AL-375 (FAA)

SAN FRANCISCO, CALIFORNIA

NORCAL APP CON
 134.5 338.2
 SFO D-ATIS
 113.7 115.8 118.85
 SJC D-ATIS
 126.95



SW-2, 03 NOV 2022 to 01 DEC 2022

SW-2, 03 NOV 2022 to 01 DEC 2022

NOTE: RADAR required.
 NOTE: RNAV 1.
 NOTE: GPS required.
 NOTE: Chart not to scale.

ARRIVAL ROUTE DESCRIPTION

ORRCA TRANSITION (ORRCA.RISTI1)

TIPRE TRANSITION (TIPRE.RISTI1)

LANDING KSFO/KSJC: From RISTI on track 218° to cross CEDES at 9000, then on heading 220° or as assigned by ATC. Expect RADAR vectors to final approach course.