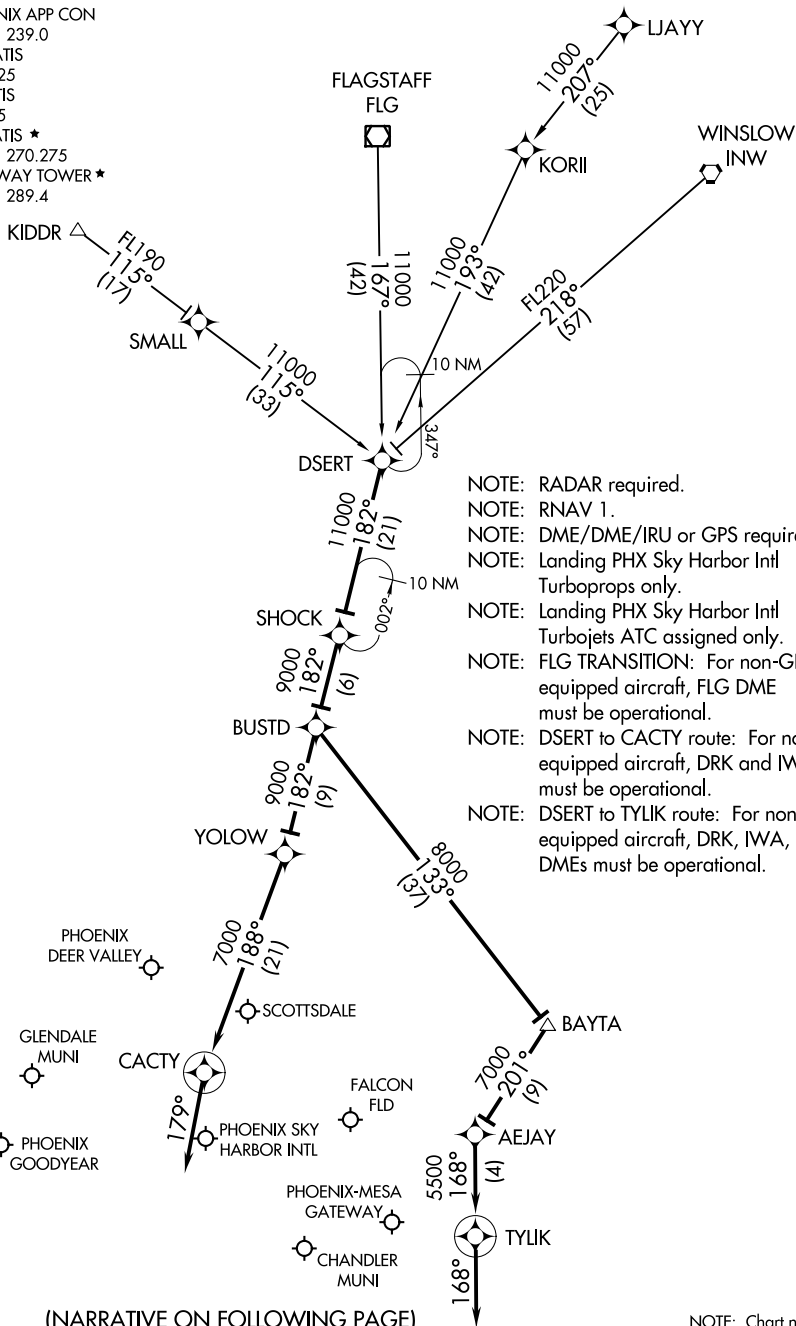


PHOENIX APP CON
 120.7 239.0
 CHD ATIS
 128.325
 FFZ ATIS
 118.25
 IWA ATIS *
 133.5 270.275
 GATEWAY TOWER *
 120.6 289.4



- NOTE: RADAR required.
- NOTE: RNAV 1.
- NOTE: DME/DME/IRU or GPS required.
- NOTE: Landing PHX Sky Harbor Intl Turboprops only.
- NOTE: Landing PHX Sky Harbor Intl Turbojets ATC assigned only.
- NOTE: FLG TRANSITION: For non-GPS equipped aircraft, FLG DME must be operational.
- NOTE: DSERT to CACTY route: For non-GPS equipped aircraft, DRK and IWA DMEs must be operational.
- NOTE: DSERT to TYLIK route: For non-GPS equipped aircraft, DRK, IWA, and PXR DMEs must be operational.

(NARRATIVE ON FOLLOWING PAGE)

NOTE: Chart not to scale.

SW-4, 03 NOV 2022 to 01 DEC 2022

SW-4, 03 NOV 2022 to 01 DEC 2022