

ARLIN FOUR ARRIVAL

AL-322 (FAA)

PHOENIX, ARIZONA

2022 03 NOV 03 '7-W

ARRIVAL ROUTE DESCRIPTION

BLYTHE TRANSITION (BLH,ARLIN4): From over BLH VORTAC on BLH R-089 and IWA R-256 to ARLIN INT. Thence, . . .

MOHAK TRANSITION (MOHAK,ARLIN4): From over MOHAK INT on GBN R-247 and BXK R-215 to HYDRR INT, then on IWA R-256 to ARLIN INT. Thence, . . .

PHOENIX SKY HARBOR INTL: Rwy 7L/R or 8: From over ARLIN, Expect vectors to final approach course; Rwy 25L/R or 26: From over ARLIN, on IWA R-256 to TUKEE. Expect vectors to final approach course prior to TUKEE.

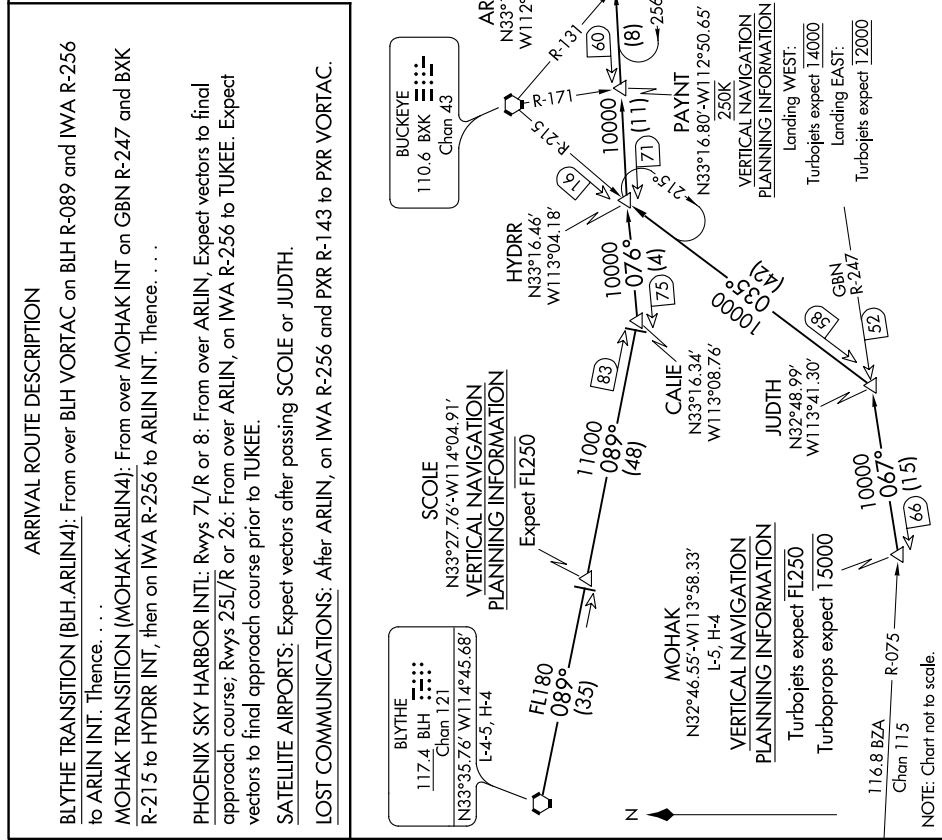
SATELLITE AIRPORTS: Expect vectors after passing SCOPE or JUDTH.

LOST COMMUNICATIONS: After ARLIN, on IWA R-256 and PXR R-143 to PXR VORTAC.

NOTE: RADAR required
NOTE: DME required

- PHOENIX APP CON 124.1 256.9
- PHOENIX TOWER 118.7 278.8 (Rwy 8-26)
- PHOENIX GND CON 120.9 254.3 (Rwy 7L-23R, 7R-25L)
- CHD ATIS 128.325
- FFZ ATIS 118.25
- DVT ATIS 118.25
- IWA ATIS 126.5
- PHX D-ATIS 133.5 270.275
- SDL ATIS 127.575
- 118.6

PHOENIX-DEER VALLEY



ARLIN FOUR ARRIVAL

PHOENIX, ARIZONA

SW-4, 03 NOV 2022 to 01 DEC 2022