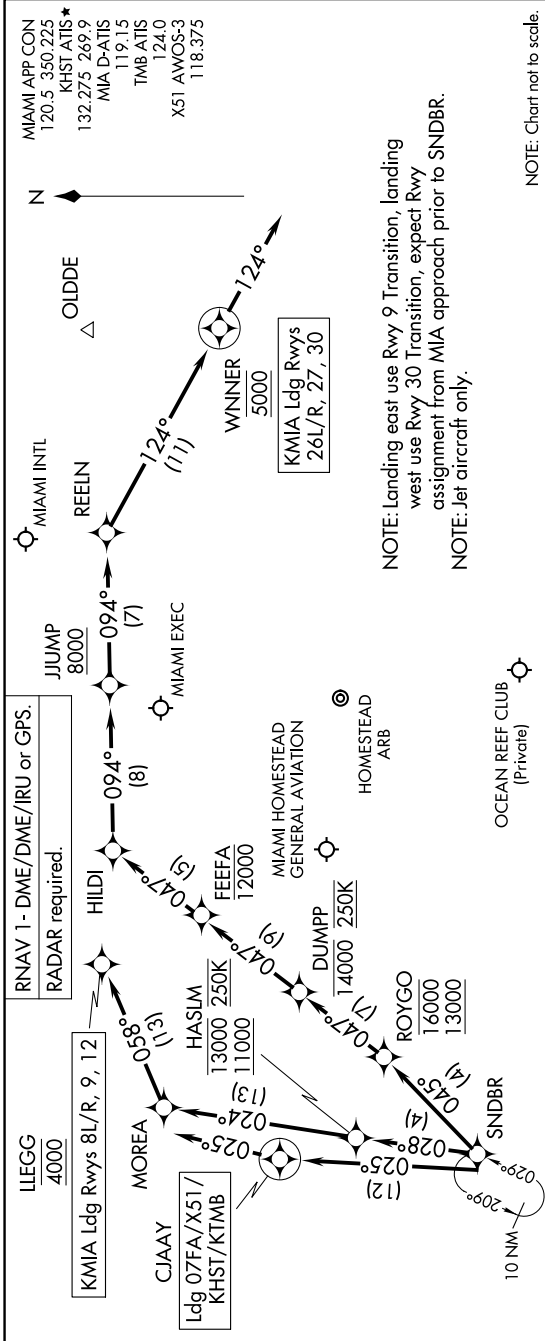


# SNDBR TWO ARRIVAL (RNAV) Arrival Routes

MIAMI, FLORIDA

SE-3, 03 NOV 2022 to 01 DEC 2022



NOTE: Chart not to scale.

## ARRIVAL ROUTE DESCRIPTION

**LANDING KMIA RUNWAYS 8L/R, 9, 12:** From SNDBR on track 028° to cross HASIM between 11000 and 13000 and at 250K, then on track 024° to MOREA, then on track 058° to cross LLEGG at 4000. Expect ILS or RNAV Rwy 9 approach or RADAR vectors to final approach course.

**LANDING KMIA RUNWAYS 26L/R, 27, 30:** From SNDBR on track 045° to cross ROYGO between 13000 and 16000, then on track 047° to cross DUMPP at or below 14000 and at 250K, then on track 047° to cross FEFFA at or below 12000, then on track 047° to HILDI, then on track 094° to cross JUMP at or above 8000, then on track 094° to REELN, then on track 124° to cross WINNER at 5000, then on track 124°. Expect RADAR vectors to final approach course.

**LANDING 07FA/X51/KHST/KTMB:** From SNDBR on track 025° to CJAAY, then on track 025°. Expect RADAR vectors to final approach course.

SE-3, 03 NOV 2022 to 01 DEC 2022

# SNDBR TWO ARRIVAL (RNAV) Arrival Routes

MIAMI, FLORIDA