

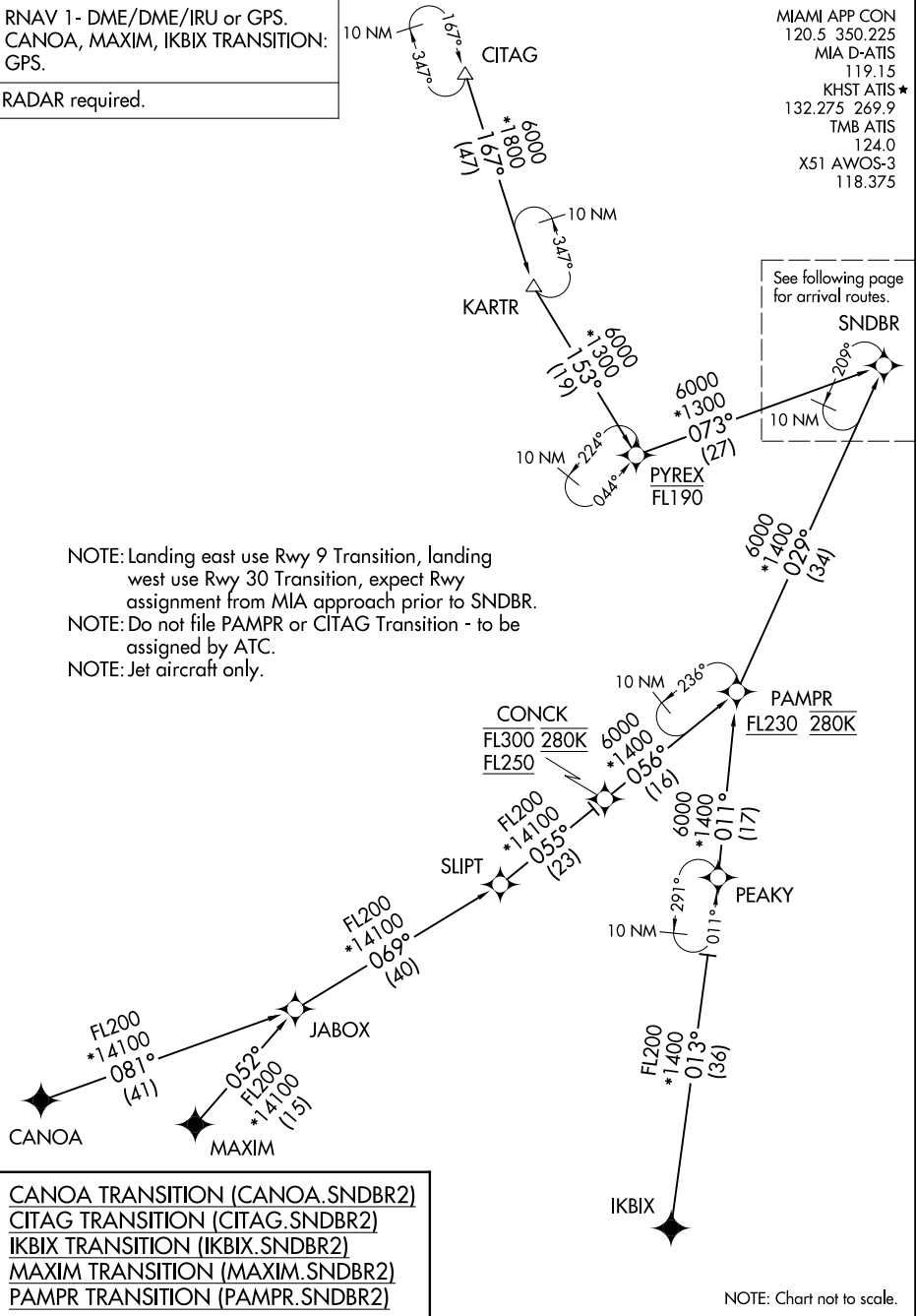
# SNDBR TWO ARRIVAL (RNAV) Transition Routes

MIAMI, FLORIDA

RNAV 1- DME/DME/IRU or GPS.  
CANOA, MAXIM, IKBIX TRANSITION:  
GPS.

RADAR required.

MIAMI APP CON  
120.5 350.225  
MIA D-ATIS  
119.15  
KHST ATIS \*  
132.275 269.9  
TMB ATIS  
124.0  
X51 AWOS-3  
118.375



NOTE: Landing east use Rwy 9 Transition, landing west use Rwy 30 Transition, expect Rwy assignment from MIA approach prior to SNDBR.  
NOTE: Do not file PAMPR or CITAG Transition - to be assigned by ATC.  
NOTE: Jet aircraft only.

- CANOA TRANSITION (CANOA.SNDBR2)
- CITAG TRANSITION (CITAG.SNDBR2)
- IKBIX TRANSITION (IKBIX.SNDBR2)
- MAXIM TRANSITION (MAXIM.SNDBR2)
- PAMPR TRANSITION (PAMPR.SNDBR2)

NOTE: Chart not to scale.

SE-3, 03 NOV 2022 to 01 DEC 2022

SE-3, 03 NOV 2022 to 01 DEC 2022

# SNDBR TWO ARRIVAL (RNAV) Transition Routes

MIAMI, FLORIDA