


LOC I-MEI <b>110.1</b>	APP CRS <b>011°</b>	Rwy Idg <b>9013</b>
		TDZE <b>289</b>
		Apt Elev <b>298</b>

# ILS or LOC RWY 1 KEY FLD (MEI)

RNAV 1- GPS or DME required for procedure entry.

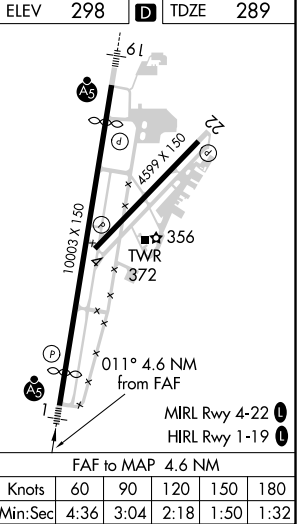
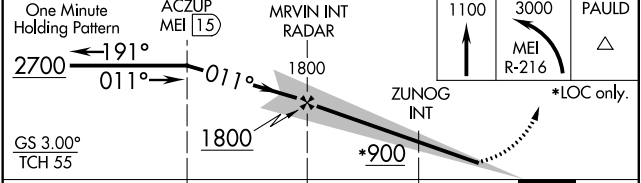
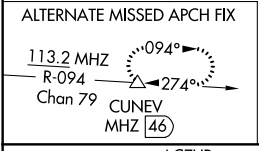
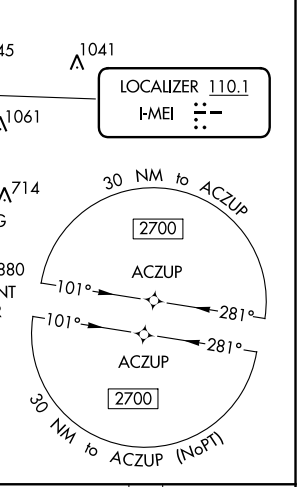
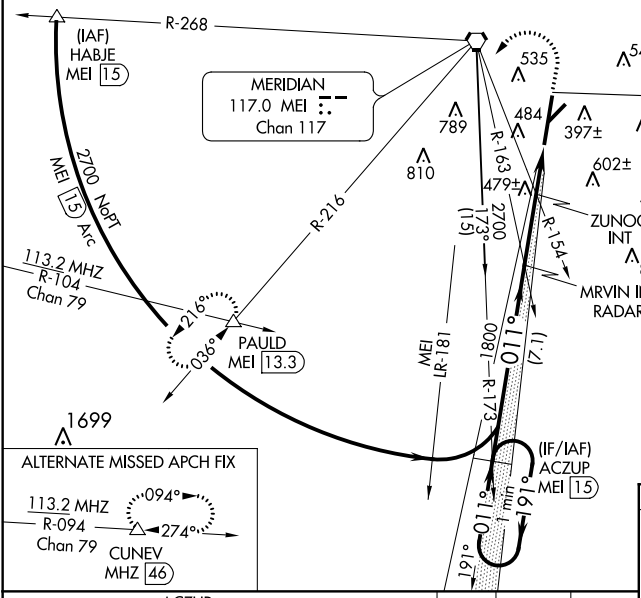
**⚠** Circling NA southeast of Rwy 1 and 22. When local altimeter not received, use Hattiesburg/Laurel Rgnl altimeter setting and increase all DA 138 feet and all MDA 140 feet, S-ILS 1 all Cats visibility to RVR 3500, S-LOC 1 Cat B visibility to RVR 4000, Cat C, D, and E visibility 3/8 mile, and Circling Cats B and D visibility 1/4 mile, Cat C visibility 1/2 mile; increase ZUNOG Fix minimums S-LOC 1 Cats C, D, and E to RVR 6000, and Circling Cat C visibility 1/2 mile, Cat D and E visibility 1/4 mile. For inop MALS/R when using Hattiesburg/Laurel Rgnl altimeter setting, increase S-ILS 1 all Cats visibility to RVR 6000 and S-LOC 1 Cat E visibility to 1 3/8 mile; increase ZUNOG Fix minimums S-LOC 1 Cat E visibility to 2 miles. Circling Rwy 22 NA at night. \*\* RVR 1800 authorized with use of FD or AP or HUD to DA (NA when using Hattiesburg/Laurel Rgnl altimeter setting).

**MALS/R**



**MISSED APPROACH:** Climb to 1100 then climbing left turn to 3000 on MEI VORTAC R-216 to PAULD INT/MEI 13.3 DME and hold.

ATIS <b>126.475 291.675</b>	MERIDIAN APP CON * <b>120.5 269.325</b>	KEY TOWER * <b>133.975 (CTAF) 0 257.8</b>	GND CON <b>121.9 348.6</b>	CLNC DEL <b>121.9 348.6</b>	UNICOM <b>122.95</b>
--------------------------------	--	--	-------------------------------	--------------------------------	-------------------------



CATEGORY	A	B	C	D	E
S-ILS 1	** 489/24 200 (200-1/2)				
S-LOC 1	900/24	611 (700-1/2)	900-1 3/4	611 (700-1 3/8)	
<b>C</b> CIRCLING	900-1	602 (700-1)	960-1 3/4	1120-2 3/4	1120-3
ZUNOG FIX MINIMUMS					
S-LOC 1	700/24	411 (500-1/2)	700/40	411 (500-3/4)	
<b>C</b> CIRCLING	860-1 562 (600-1)	880-1 582 (600-1)	960-1 3/4 662 (700-1 3/4)	1120-2 3/4 822 (900-2 3/4)	1120-3 822 (900-3)

SC-4, 03 NOV 2022 to 01 DEC 2022

SC-4, 03 NOV 2022 to 01 DEC 2022