

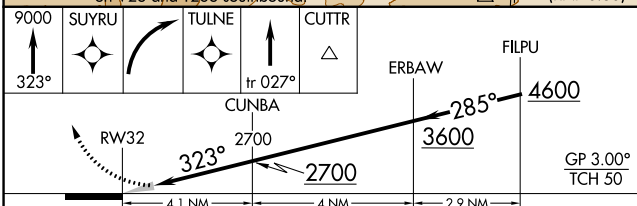
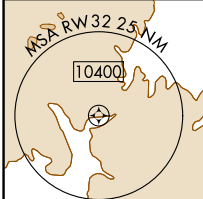
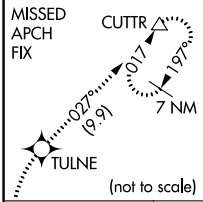
APP CRS	Rwy Idg	8800
323°	TDZE	1335
	Apt Elev	1335

RNAV (RNP) Z RWY 32

ROGUE VALLEY INTL-MEDFORD (MFR)

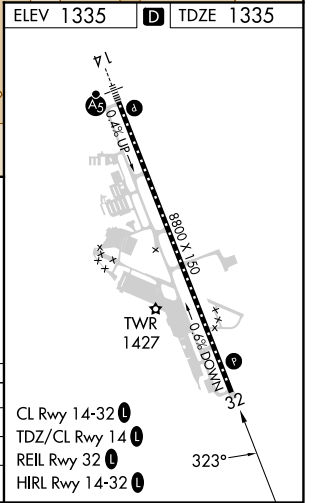
RNP AR APCH-GPS.	MISSED APPROACH: Climb to 9000 on 323° to SUYRU, right turn to TULNE, then on track 027° to CUTTR and hold, continue climb-in-hold to 9000.
▼ For uncompensated Baro-VNAV systems, procedure NA below -6°C or above 54°C.	

ATIS 127.25	CASCADE APP CON* 124.3 379.9	MEDFORD TOWER* 119.4 (CTAF) 0 257.8	GND CON 121.8	UNICOM 122.95
-----------------------	--	---	-------------------------	-------------------------



CATEGORY	A	B	C	D
RNP 0.10 DA	1683-1		348 (400-1)	
RNP 0.30 DA	1870-1½		535 (600-1½)	

AUTHORIZATION REQUIRED



NW-1, 03 NOV 2022 to 01 DEC 2022

NW-1, 03 NOV 2022 to 01 DEC 2022