

LOC/DME I-MFR	APP CRS	Rwy Idg	8800
110.3	143°	TDZE	1303
Chan 40		Apt Elev	1335

ILS or LOC RWY 14

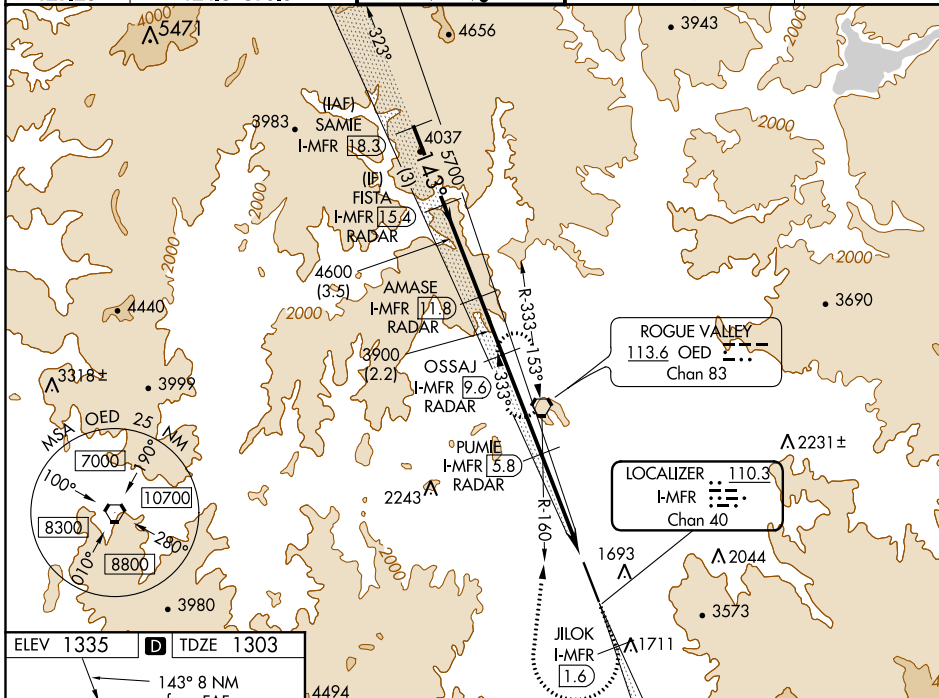
ROGUE VALLEY INTL-MEDFORD (MFR)

DME required. DME or RADAR required for procedure entry.

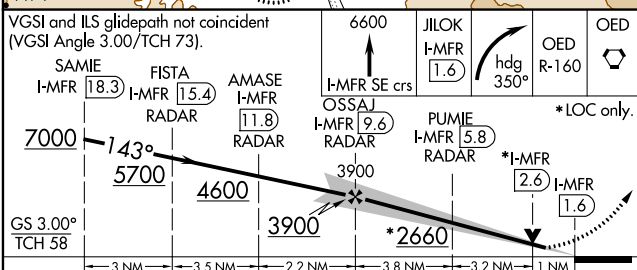
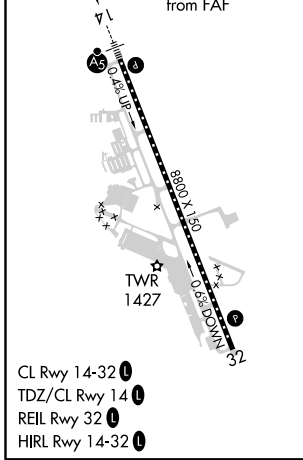
MAJLSR MISSED APPROACH: Climb to 6600 on I-MFR SE course to JILOK/I-MFR 1.6 DME and climbing right turn on heading 350° and on OED VORTAC R-160 to OED VORTAC and hold, continue climb-in-hold to 6600. #Missed approach requires minimum climb of 331 feet per NM to 4100.

⚠ Circling NA for Cats C and D northeast of Rwy 14-32. When Medford altimeter setting not received, procedure NA. For inop ALS, increase S-ILS 14 visibility to 1½ SM, increase S-LOC 14# Cats C and D visibility to RVR 5500, increase S-LOC 14 Cats C and D visibility to 2½ SM.

ATIS	CASCADE APP CON*	MEDFORD TOWER*	GND CON	UNICOM
127.25	124.3 379.9	119.4 (CTAF) 0257.8	121.8	122.95



ELEV 1335	D	TDZE 1303
-----------	----------	-----------



CATEGORY	A	B	C	D
S-ILS 14#		1503/18	200 (200-½)	
S-ILS 14		1929-1½	626 (600-1½)	
S-LOC 14#	1680/24	377 (400-½)	1680/35	377 (400-¾)
S-LOC 14	2080/24 777 (800-½)	2080/40 777 (800-¾)	2080-1¾	777 (800-1¾)
C CIRCLING	2080-1 745 (800-1)	2080-1¼ 745 (800-1¼)	2080-2½ 745 (800-2½)	2340-3 1005 (1100-3)

NW-1, 03 NOV 2022 to 01 DEC 2022

NW-1, 03 NOV 2022 to 01 DEC 2022