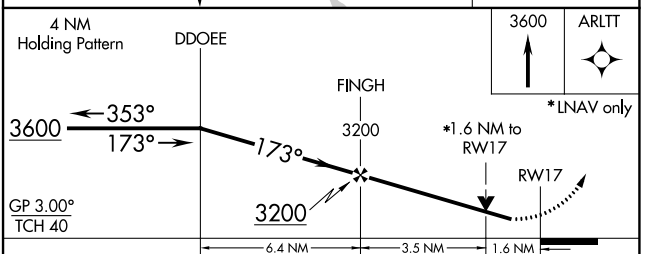
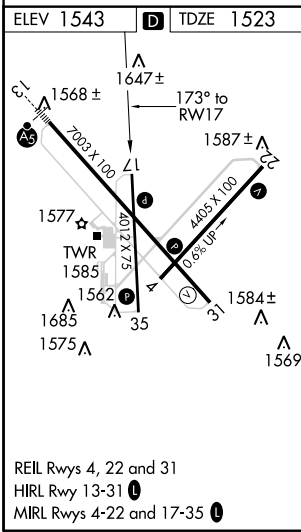
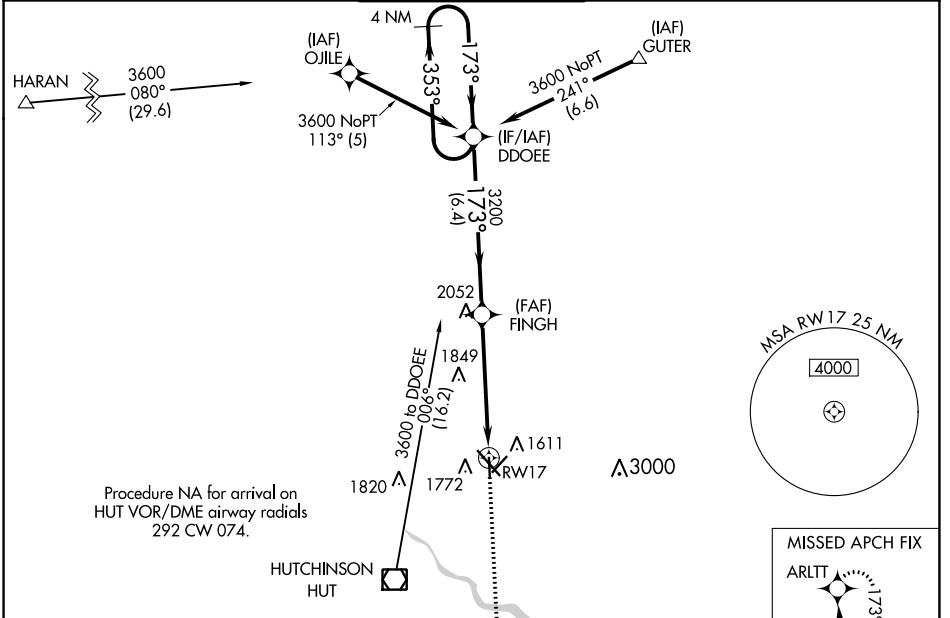


| | | | |
|--|------------------------|---|-------------|
| WAAS CH 81941 W17A | APP CRS 173° | Rwy Idg TDZE 1523 Apt Elev 1543 | 4012 |
|--|------------------------|---|-------------|

RNAV (GPS) RWY 17

HUTCHINSON RGNL (HUT)

| | | | | |
|--|---|---|--|---------------------------------|
| <p>⚠ Circling to Rwy 22 NA at night. For uncompensated Baro-VNAV systems, LNAV/VNAV NA below -18°C (0°F) or above 54°C (130°F). DME/DME RNP-0.3 NA.</p> | | | <p>MISSED APPROACH: Climb to 3600 direct ARLTT and hold.</p> | |
| <p>ATIS 124.25</p> | <p>WICHITA APP CON 125.5 306.2</p> | <p>HUTCHINSON TOWER * 118.5 (CTAF) 363.0</p> | <p>GND CON 121.9</p> | <p>UNICOM 122.95</p> |



| CATEGORY | A | B | C | D |
|-------------------|----------------------|-------------|-------------------------|----|
| LPV DA | 1889-1 366 (400-1) | | | NA |
| LNAV/VNAV DA | 2078-1½ 555 (600-1½) | | | NA |
| LNAV MDA | 2060-1 | 537 (600-1) | 2060-1½ 537 (600-1½) | NA |
| C CIRCLING | 2080-1 | 537 (600-1) | 2200-1¾ 657 (700-1¾) | NA |

NC-2, 03 NOV 2022 to 01 DEC 2022

NC-2, 03 NOV 2022 to 01 DEC 2022