

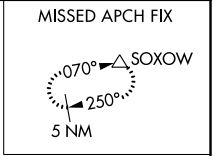
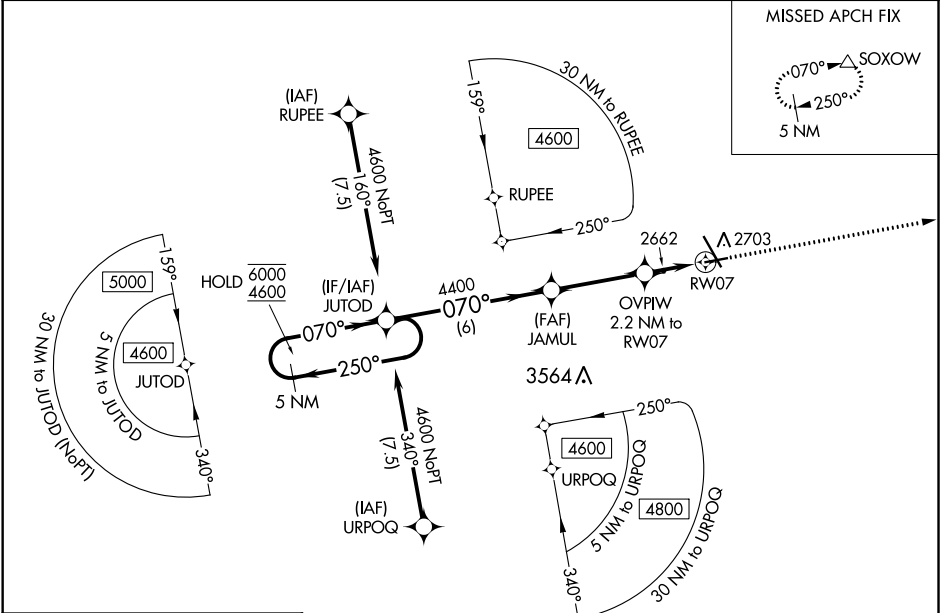
WAAS CH <b>90544</b> <b>W07A</b>	APP CRS <b>070°</b>	Rwy ldg <b>4700</b> TDZE <b>2583</b> Apt Elev <b>2592</b>
--	------------------------	---

# RNAV (GPS) RWY 7

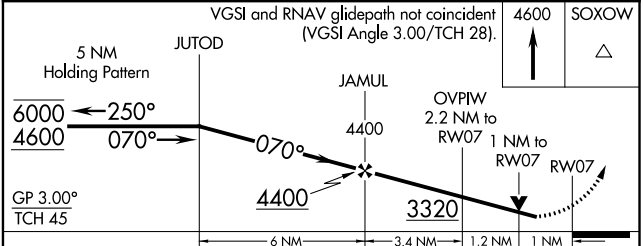
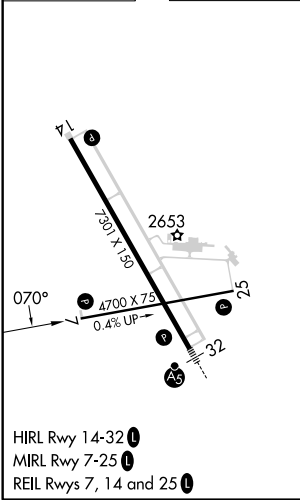
DICKINSON/THEODORE ROOSEVELT RGNL (DIK)

RNP APCH - GPS.	MISSED APPROACH: Climb to 4600 direct SOXOW and hold.
<p><b>▼</b> Rwy 7 helicopter visibility reduction below 3/4 SM NA.</p> <p><b>▲</b> For uncompensated Baro-VNAV systems, LNAV/VNAV NA below -26°C or above 54°C.</p>	

ASOS <b>118.375</b>	MINNEAPOLIS CENTER <b>124.25 236.825</b>	UNICOM <b>123.0 (CTAF) 0</b>
------------------------	---	---------------------------------



ELEV <b>2592</b>	<b>D</b>	TDZE <b>2583</b>
------------------	----------	------------------



CATEGORY	A	B	C	D
LPV DA		2833-1	250 (300-1)	
LNAV/VNAV DA		2833-1	250 (300-1)	
LNAV MDA		2920-1	337 (400-1)	
CIRCLING	3060-1	468 (500-1)	3120-1½ 528 (600-1½)	3200-2 608 (700-2)

# RNAV (GPS) RWY 7

NC-1, 03 NOV 2022 to 01 DEC 2022

NC-1, 03 NOV 2022 to 01 DEC 2022